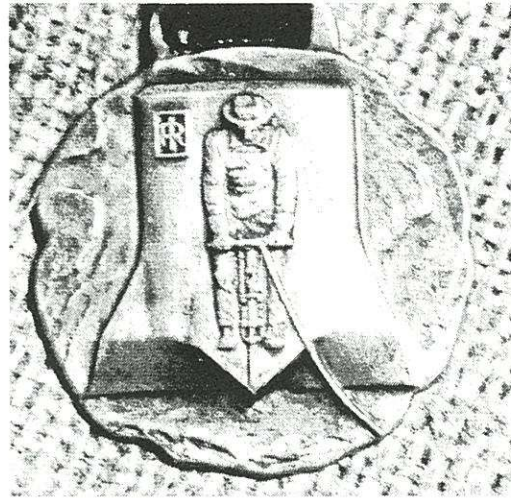


The fob to the right is from Ingersoll Rand - no second guessing what the company was trying to promote. (Editors note: I have seen numerous examples of this fob, but only realized as I looked at this photo that the background behind the driller is a rock bit!)

The collecting of watch fobs is a very old hobby, but to those with an interest in mining it has yet to stir much attention. Time will tell!



A Miner's Pocket Watch

Len Gaska

I have long known that pocket watches with railroad motifs were produced, but this is the first pocket watch with a mining motif that I have seen. It was made by Waltham, a company still in business today, and has seven jewels. The person I bought it from, a watch collector, guessed that it was made around 1900. The embossed scene shows two miners working at a face and one has an oil lamp clearly visible. Yet another mining related collectible to search for!

