

Doud or Dowd?

by Dave Johnson

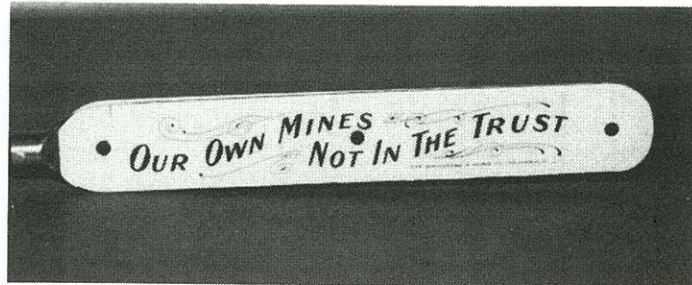
For the past several years there has been a controversy over the correct spelling of Doud (Dowd) on the C.H. & W.G. Doud oil wick lamp. As one can see from the accompanying photos, the spelling was right, each of us with differing opinions were looking at lamps with different spellings. The original patent lists the name W. G. Dowd as inventor. However, for the die-hard collector, *both* Dowd and Doud lamps certainly exist.



Central Coal Co.

by Dave Johnson

The first commercial coal production in Indiana was reported in 1840, with a total of 9,682 tons mined, ranking Indiana as the nation's 6th largest producer of the 13 reporting states. By 1901, Indiana was still ranked in 6th place as a coal producer among the 28 reporting states, with 6,918,225 tons produced, behind Pennsylvania, Illinois, Alabama, West Virginia and Ohio.



This same year, 1901, the Central Coal Company of Terre Haute, Indiana was organized, with W.W. Ray as President and William L. Williamson as Secretary and Treasurer. The company's offices were located at 314-315 Opera House Block. In 1906 the company moved its offices to 400 Grand Opera Block. By 1910 they had moved their offices to 708 Trust Building. There is no record of the firm available after 1912.



The letter opener pictured here is an interesting piece of memorabilia from the Central Coal Company. It was obviously manufactured in 1901, as that was the only year that the firm had its offices in the Opera House Block.

References

Terre Haute City Directory 1901-1902.

Mineral Resources of the United States, Part II, Non-metals, Govt. Printing Office, 1916.