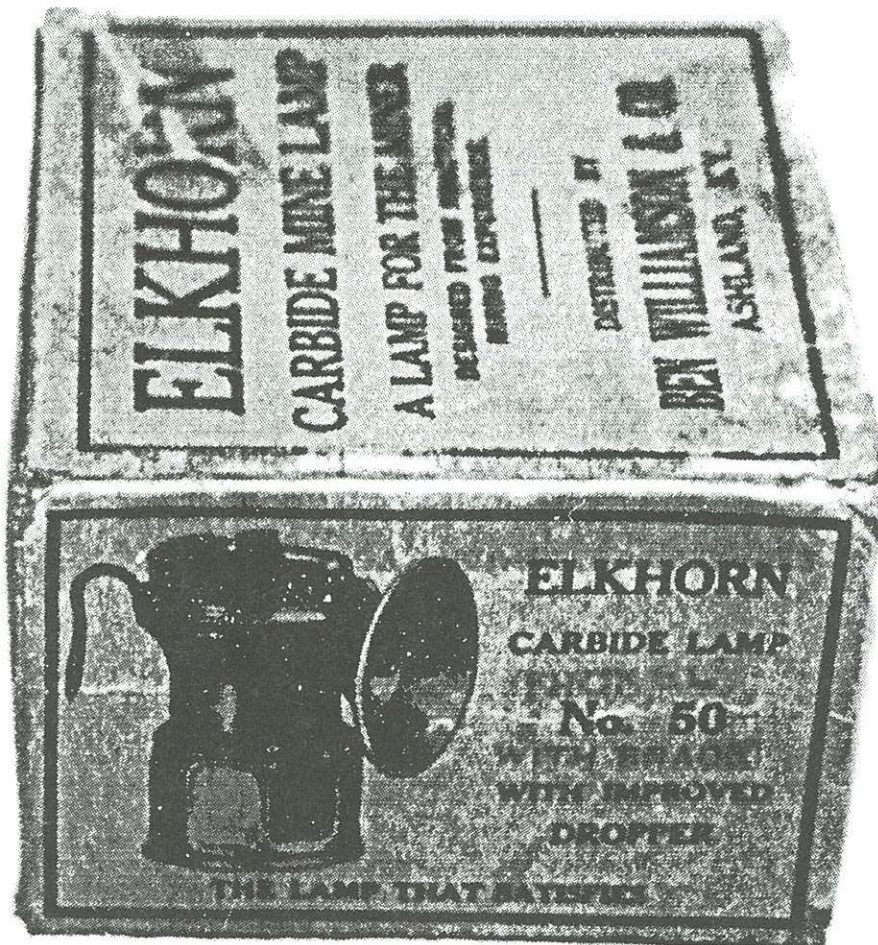
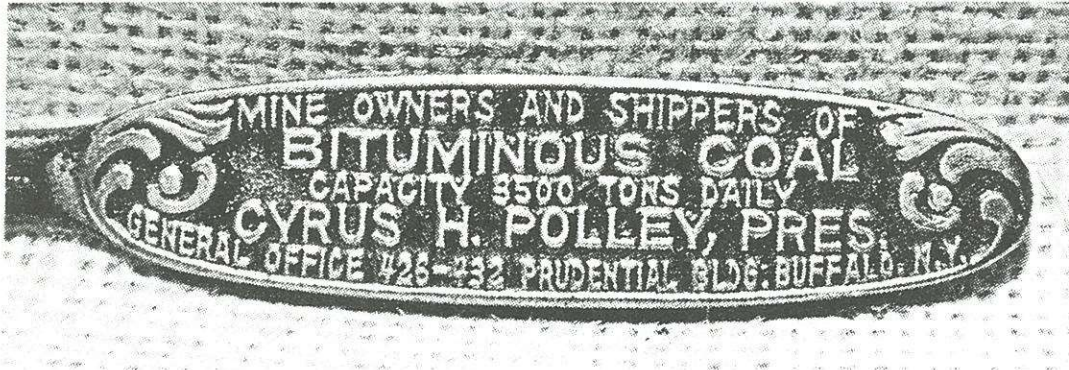


Letter Opener

This nickel-plated advertising letter opener with raised cast lettering advertises three Pennsylvania bituminous coal mining companies. This type of advertising piece is a welcome addition to any mining collector.



With or Without Brace?

This Elkhorn box shows that the lamp inside was nickel-plated and came with the...*optional* brace. While it is true that these lamps are almost always found *with* the cap brace, or some remnant thereof, there clearly were some that were supplied without the brace