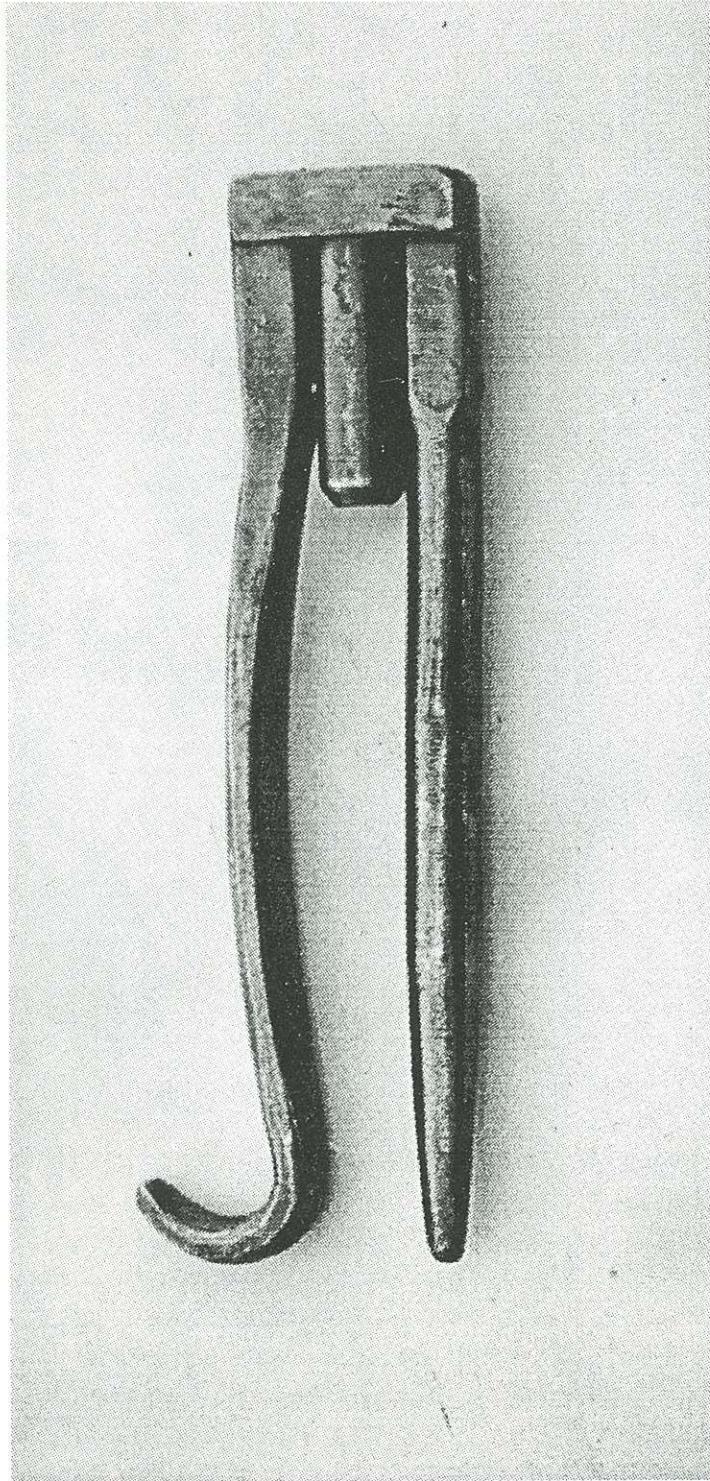


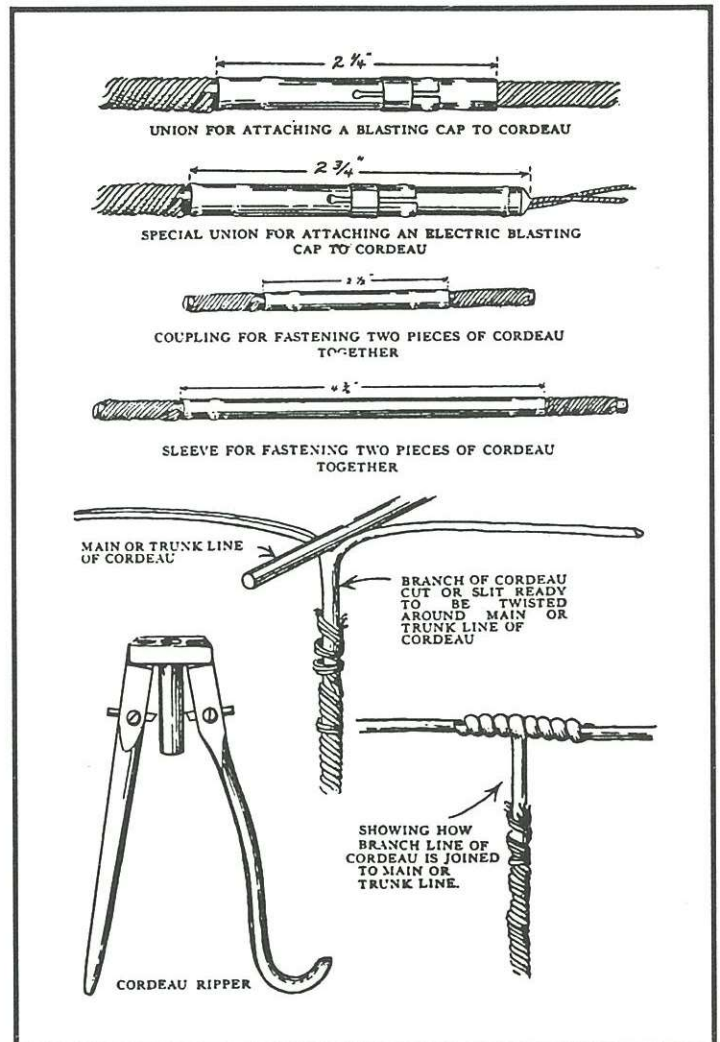
# The Cordeau Slitter

by Bob Schroth



Cordeau slitter.  
(Reg Patee collection and photo).

Cordeau was an early version of detonator cord... kind of an explosive fuse that would burn almost as fast as an electric cap would explode. When laid alongside a long stretch of dynamite, it would increase the efficiency of the explosion by igniting it along its entire length.. It was thus best suited to "well-drill holes", which were long and deep drill holes loaded with dynamite. To fire several holes at once, one joined the free ends of the cordeau from each hole to a "main trunk" of cordeau. To make the splices of the free ends to the main trunk required the use of a cordeau ripper, also known as a cordeau slitter. The main trunk was ignited with an electric blasting cap. Reg Patee and I have now both obtained examples of this rare blaster's tool. The diagram below shows how the splices are made.



From 1930 Blaster's Handbook. "Accessories required in the use of cordeau and splicing methods recommended."