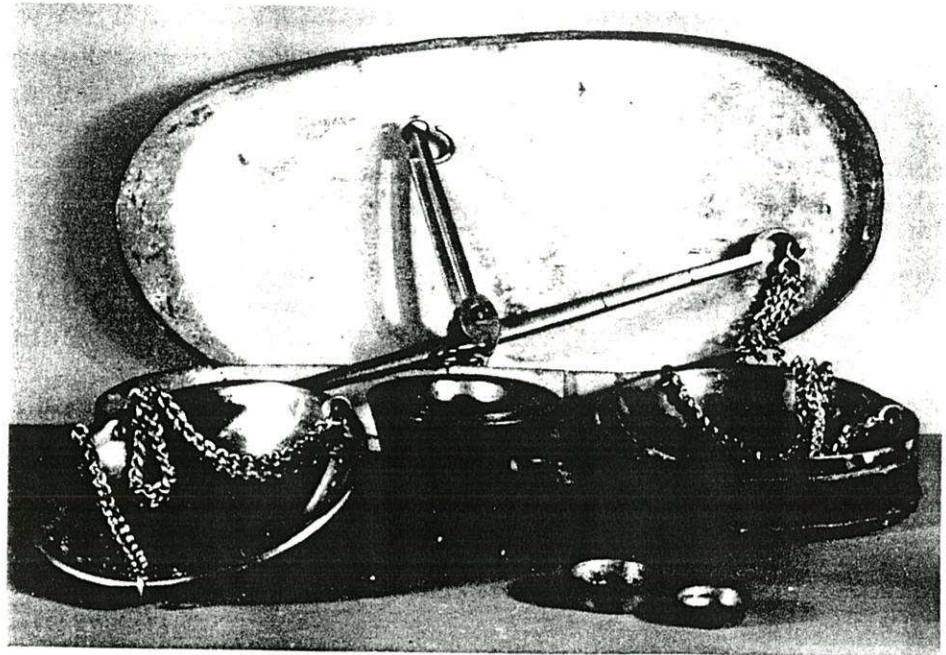


## Miner's Improved Gold Scales

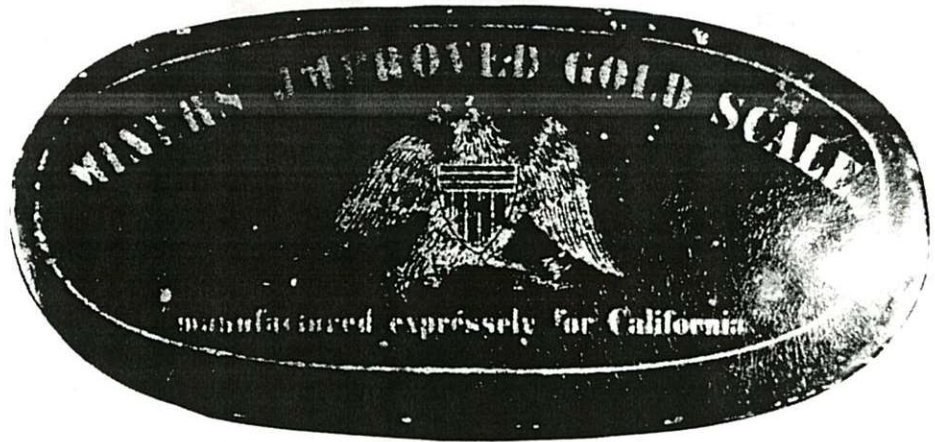
by Jim Steinberg

As an adjunct to the excellent article by Jeffery R. Millet in the last issue of the MAC, here are some illustrations of the Miner's Improved Gold Scales. It is not unusual to run into these scales with the markings of the lid having large rubbed off areas, but an otherwise good scale inside. Since you are largely buying these for the markings on the "can", put your greatest emphasis on the state of the artwork and the writing. Checking of the paint surface is to be expected since these scales are very old. The scales shown here are from the Jim Steinberg collection.



*Oval tin open to show scale.*

*Note the "J" in Improved and the extra "e" in express(e)ly on the oval tin. Dimensions are 6 3/8 inches wide by 3 inches deep and 1 inch high.*



*Note how on the rectangular box, the spellings have been corrected. The dimensions of this tin are 7 1/4 inches wide by 3 inches deep and 1 1/4 inches high.*

