

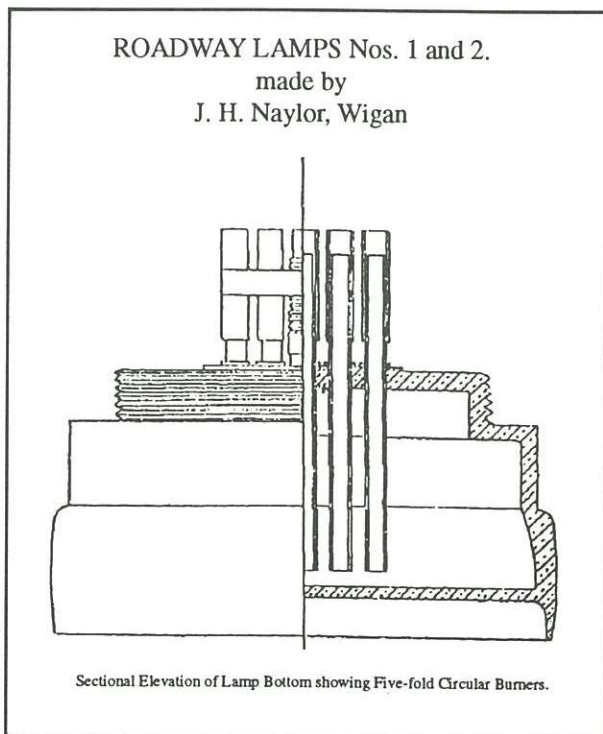
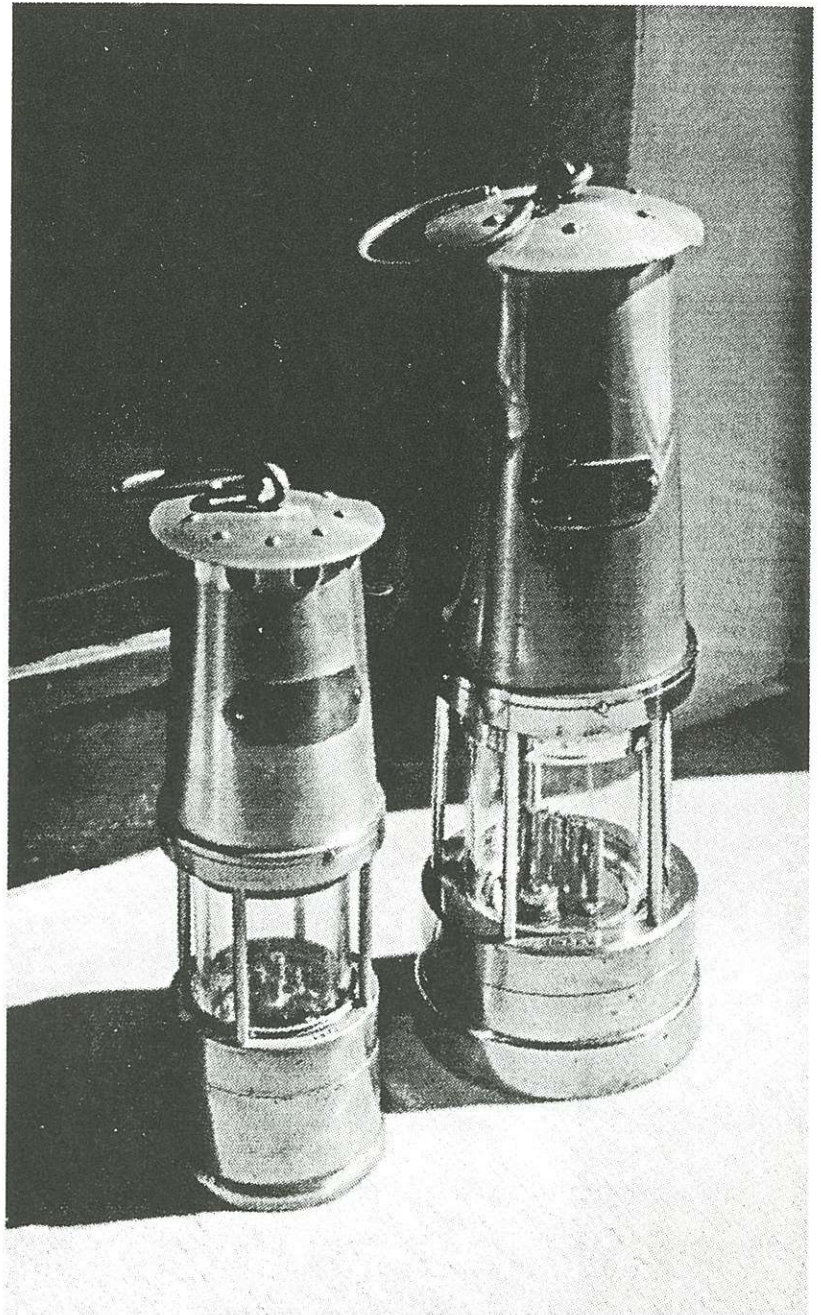
Naylor Safety Lamps

by Manfred Stutzer

In a recent post to the Mining-Collect newsgroup, Len Gaska inquired about an unusual safety lamp he had recently acquired. Stamped with the name Naylor, it was much larger than most, and had five separate burners. In this article, Manfred Stutzer adds what information he has on the Naylor Safety lamp.

Shown here is part-copy of the Naylor/Wigan catalogue with the picture and description of the tall Roadway/Pit bottom lamp. The Naylor lamp is indeed a miner's safety lamp. Its five burners exist for the sole purpose of greater illumination. The five burner model, in fact, is over three candle-power.

My multi-burner lamp is pictured together with a normal sized Naylor lamp. I have another similar tall safety lamp in my collection made by Ellis/Wakefield (see photo). This lamp has a flat wick, and its height is a bit taller than a Naylor: 16 inches, 5.2 inch diameter brass bottom. Wick is one inch wide.



Standard Naylor lamp next to larger five-burner "Roadway" Naylor lamps. (Author's collection).

Specifications

Maker	J. H. Naylor, Wigan		
Lamp(s)	Roadway Lamps 1 & 2		
Fuel	Oil or Petroleum		
Bonnet	Riveted steel with fastened crown or seamless steel one piece or brass crown supported by three or more steel pillars, the bonnet of rivetted steel is then removable secured by lead rivet.		
Middle Ring	Brass, steel or iron with vertical inlet holes.		
Pillars	5 brass, steel or iron.		
Bottom Ring	Brass, steel or iron.		
Gauzes	Height from shoulder	Outer 6 ¼"	Inner 5"
	Diameter at top	2 ¼"	2"
	Diameter at bottom	2 ½"	2 ¼"
Retaining Ring	Brass screw threaded.		
Vessel	Cast brass or soldered brass base. Petroleum lamp has 5 or more round wicks. Oil burning lamp has two flat wicks approx. 3/4", and may have porcelain body or domed shield.		
Locking	Lead rivet		
May have a removable reflector.			
Restrictions	As other porch or Roadway lamps.		

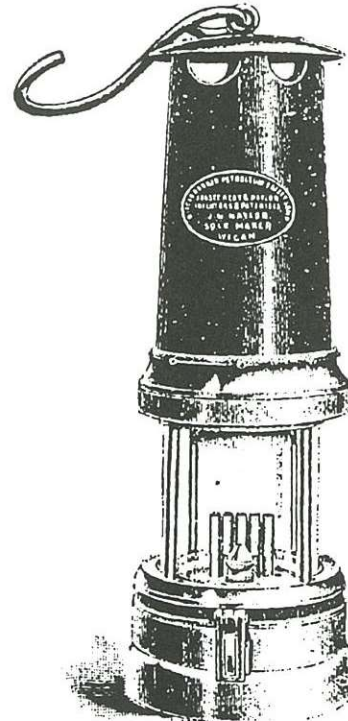
Roadway and Pit Bottom Petroleum Safety Lamp.

It is the desire of all colliery proprietors and managers to light up their pit bottoms and roadways safely, economically, and efficiently. For this purpose we have created a reliable model which is now in favour in many collieries.

It is a Safety Lamp with all latest improvements, built on the same principle as our Patent Bifold Burner Lamps, but with five burners. It is usually supplied to consume petroleum, but, if desired, we can supply to consume ordinary colza oil.

It meets the requirements not only of the above-mentioned purpose, but is also a splendid lamp for shaft examination.

The illuminating power is very great, being over three candles. It appears on the approved list of the Coal Mines Act, 1913.



Price
35/-,
complete
with
Reflector.

Roadway
Lamp.
to consume
petroleum.

CENTRAL BRASS WORKS : : : : : WIGAN

Ellis/Wakefield lamp, disassembled, showing flat wick. (Author's collection).

