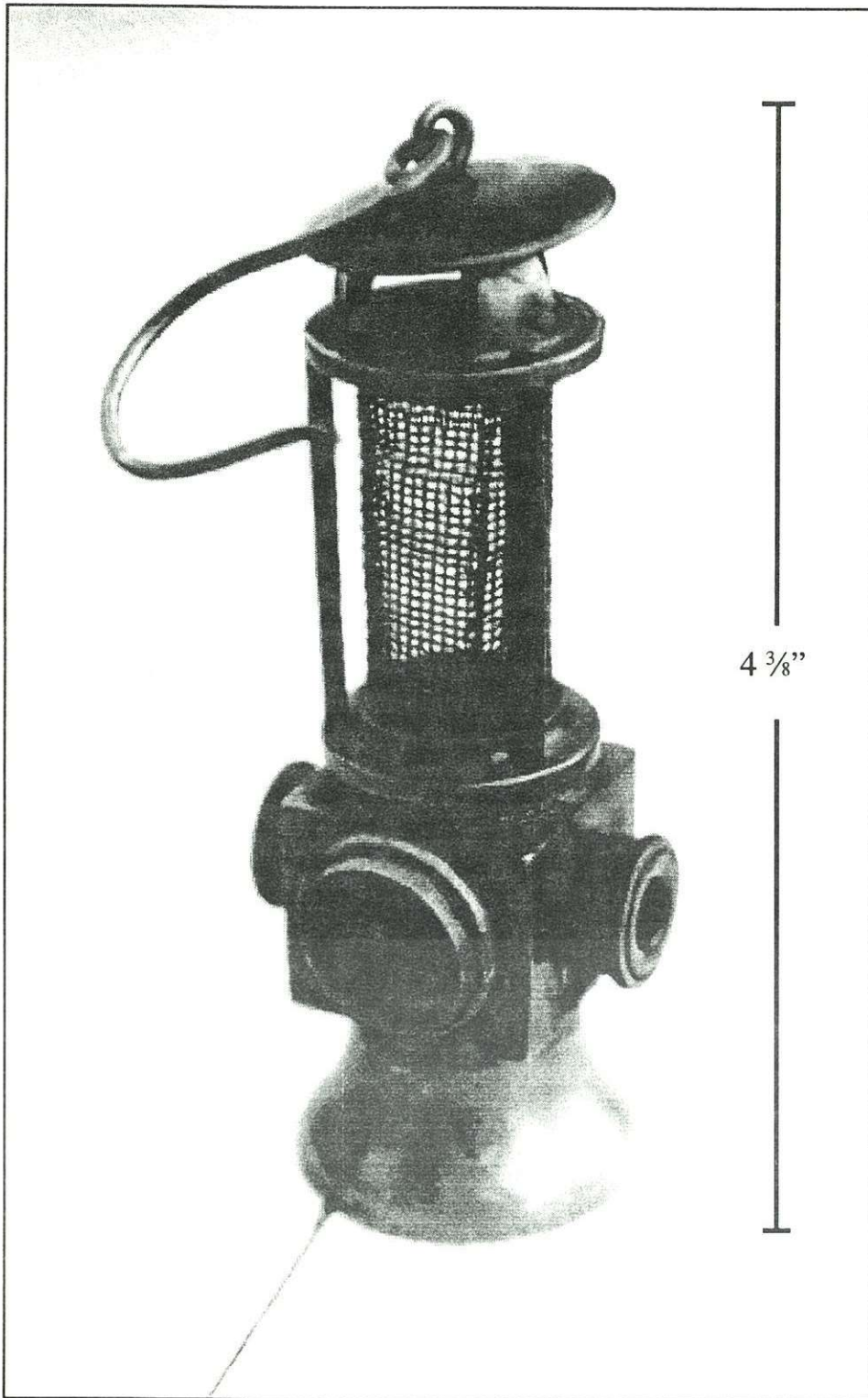


# Miniature Safety Lamp

by Nelson Ressler



Finding any good mining artifact will always be a thrill to an avid collector. It is always such a satisfying reward at least in our own eyes, for the countless times we go out and find nothing - or worse - we find something that we normally wouldn't buy and lug it home anyway! Most of us have a box stashed away in the attic or basement full of junkers, clunkers, and worthless miscellanea, usually mining related, but not always.

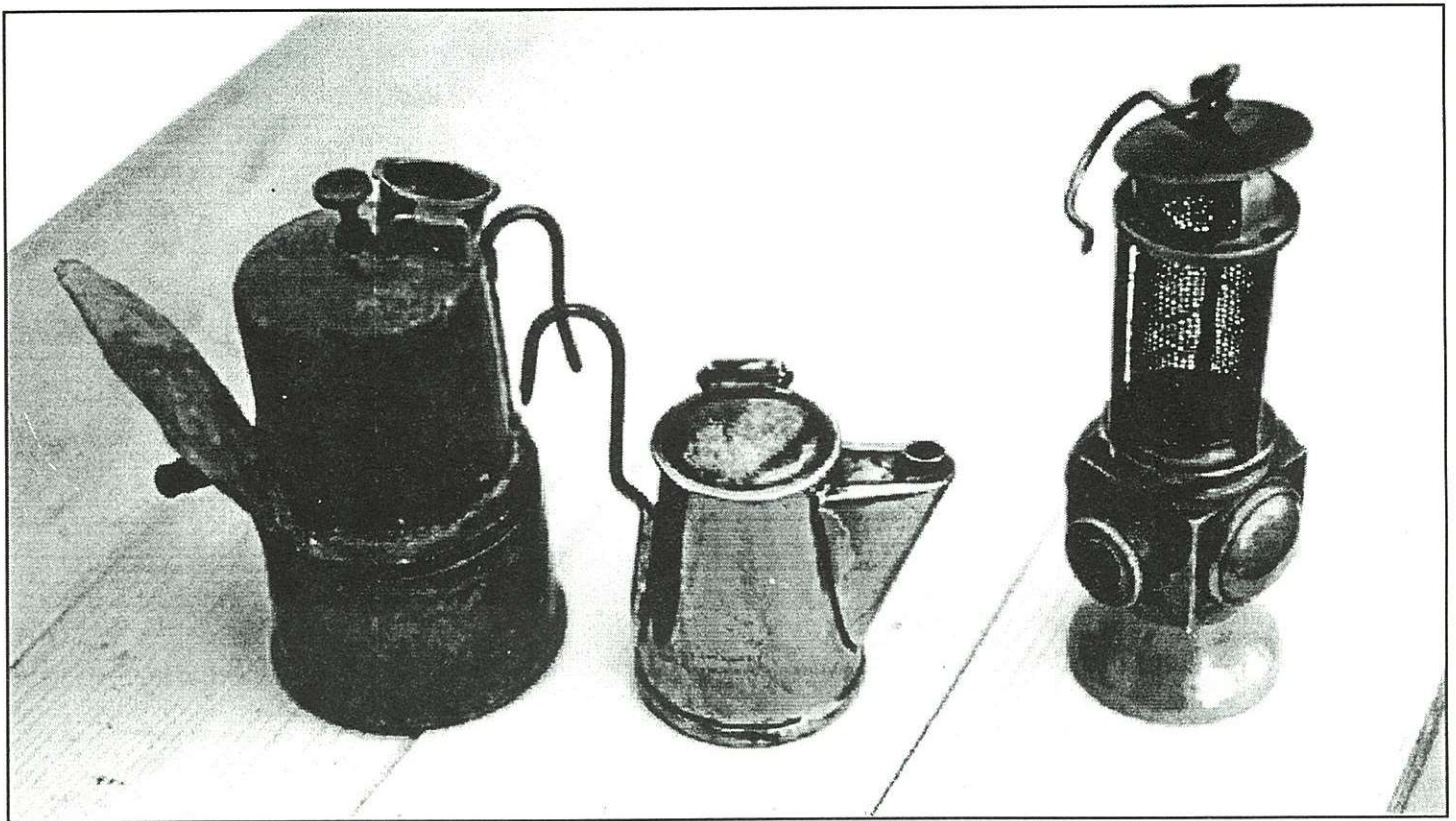
Recently, I had the thrill of a collector's lifetime when the opportunity to purchase a one of a kind mining artifact was afforded me by a friend who deals in antiques. That artifact was a miniature "surveyor's" safety lamp after the R. Mauchline patent.

This beautiful, remarkably well made lamp stands  $4 \frac{3}{8}$ " from the base to the top of the "floppy disc" (see photo), is  $1 \frac{1}{2}$ " in diameter at the base and  $1 \frac{1}{4}$ " in diameter at the top disc. Unlike the full size models with which I'm familiar, the body of the lamp (that housing the lens, reflective mirror, and side vents) is a square casting as opposed to the horizontal cylinder-like castings of both the Everhart and Quirin examples. The body measures  $\frac{15}{16}$ " high by  $\frac{1}{8}$ " wide by  $\frac{1}{8}$ " deep with the lens being  $\frac{13}{16}$ " in diameter - the same diameter of the mirror opposite it.

There are, however, several striking similarities between this lamp and both the Quirin and Everhart examples which I have seen. The most obvious being the triple-arch cast top with the floppy brass disc. The brass "bullseye" casting which houses the reflective mirror is also very much like its aforementioned counterparts, as are the gauze covered side vents, which thread on and off, just like the full-sized version.

It can logically be theorized that there is some connection between this miniature and the full-sized Everhart and Quirin lamps. It has been speculated by some of the more advanced and knowledgeable safety lamp collectors who have examined this lamp that it is perhaps a patent model or prototype model.

The search goes on for more information as I still have some leads to follow up on but, as you all know, one never knows whether leads on such things will ever pan out. If anyone has any information not previously published concerning this or any other surveyor safety lamp, the collecting community would be forever indebted to you if you submit it to *Eureka!* for future publication and the further edification of our collective information network. Good hunting, you may be next!



*Miniature safety lamp shown next to a carbide cap lamp and an oilwick lamp for scale.*