

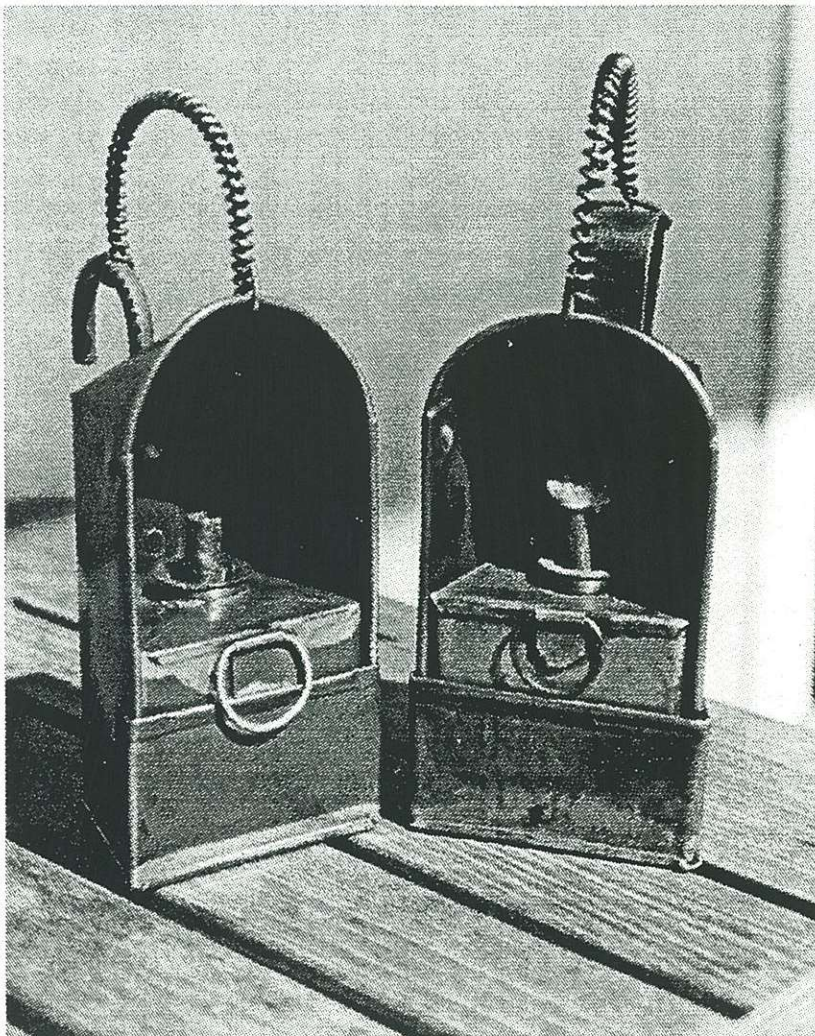
The Midgy Lamp: an English Blende-Lamp

by Manfred Stutzer

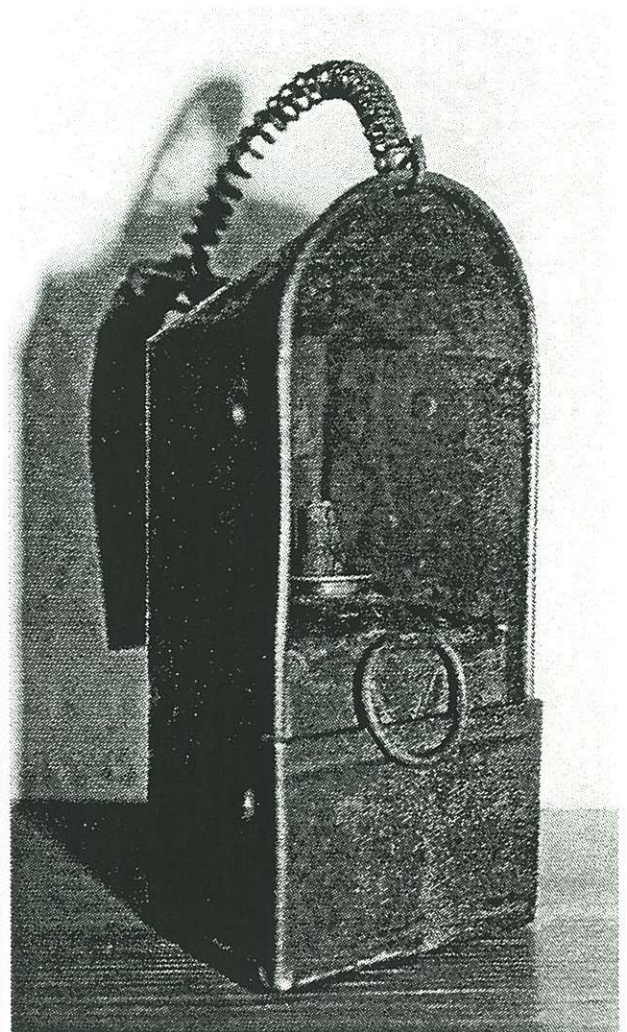
“Blende-lamps” from Germany are well known. These kind of lamps were used especially in the metal mines of Saxony (Frieberg, Schneeberg, etc.) Today, German blende-lamps are highly valued and a very collectable item.

Blende-lamps from England, made of wood and tin, are less well known. The English blende-lamp, made of tin, is known as the so-called “Midgy lamp.” Midgy lamps were used mainly in Northern England, in the coal mines around Durham. The wooden English blende-lamps were found mainly in the metal mines of the Weardale District in the North of England.

It is believed that local tinsmiths may have made the lamps for the miners around 1900. One of them was Fred Cable, a tinsmith from Newcastle-on-Tyne. The English blende-lamps were fitted either with candles or a small oil wick canister. These English mining lamps are rare, and not easy to find.



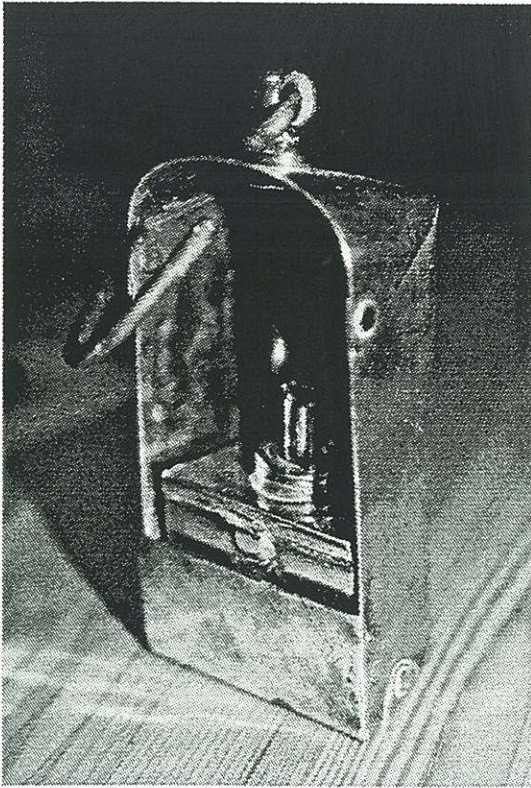
Midgy lamps, made of tin, with round and flat hook.



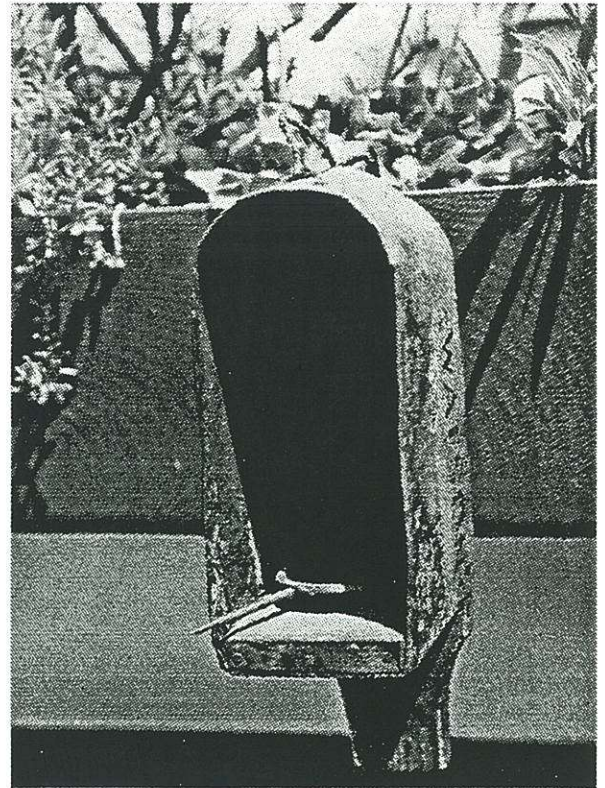
Midgy lamp, with a flat hook, made of tin.



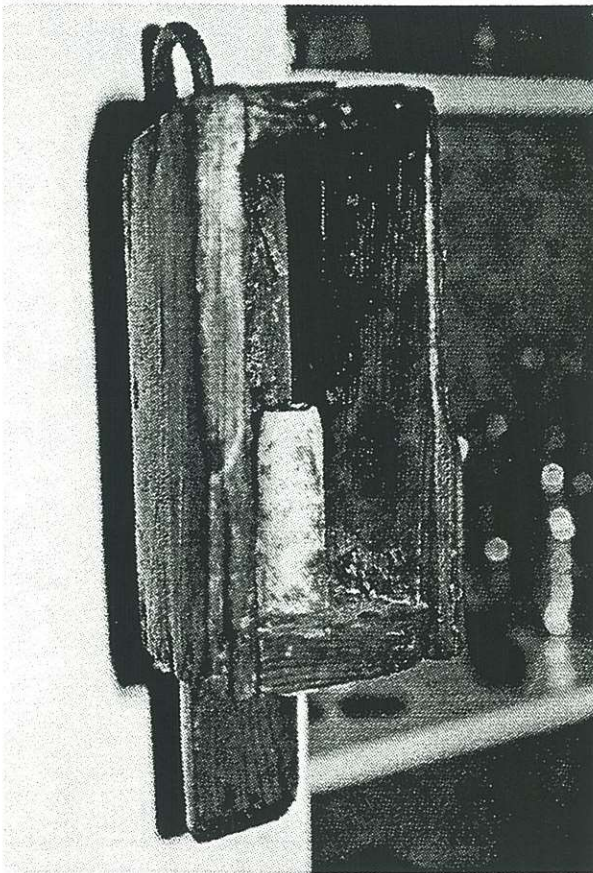
A group of young miners, some carrying Midgy-Lamps, some with electric.



Midgy-Lamp made in copper.



Blende-Lamp made in wood and tin.



Blende-Lamp made of wood.



Young drillman, behind a young boy with a Midgy-Lamp.