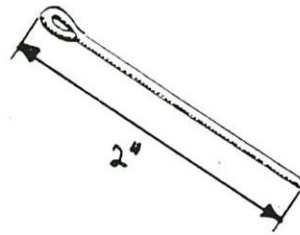
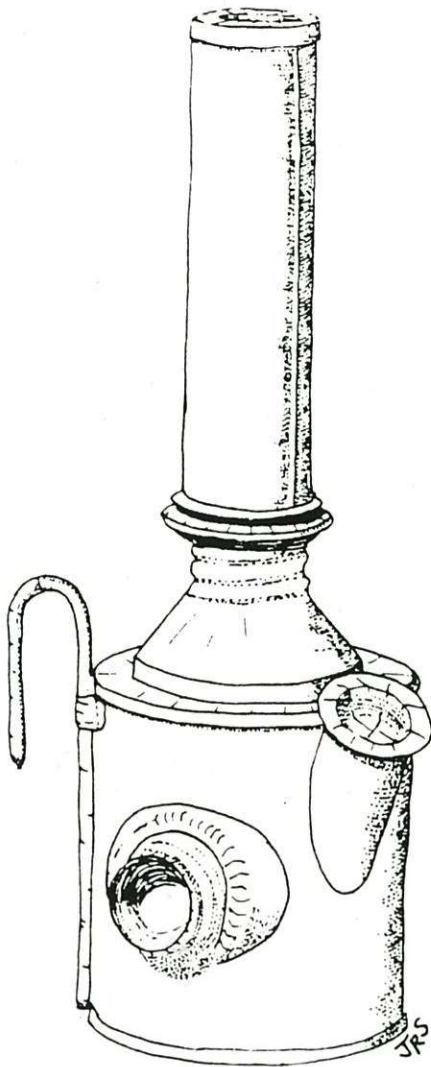


Mine Surveyor's Oil Lamp by Jim Steinberg

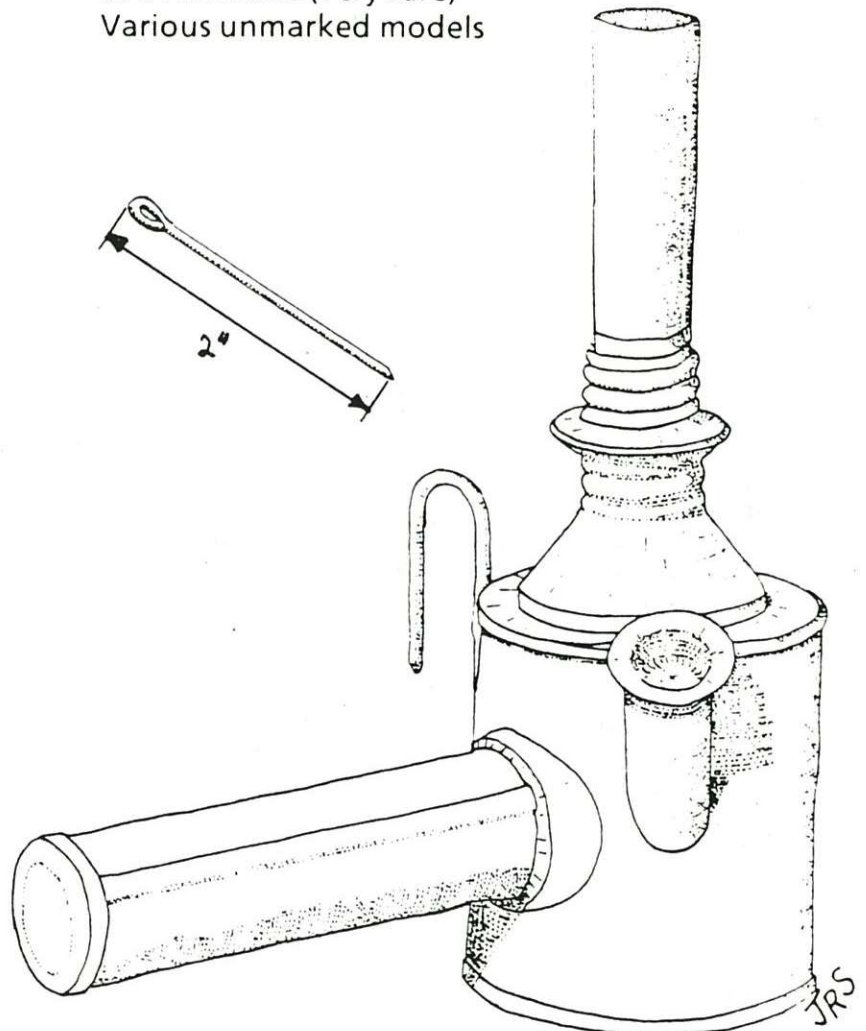
Perhaps one of the more interesting miner's oil lamps patented was that of David D. Williams. The most unique feature of this lamp is the screw-on wick cover that is cleverly designed to double as a lamp handle. The patent text describes these features and mentions its leak resistance while carrying the lamp in a pocket, but makes no mention of surveying. An advertisement which does list such a lamp as a surveyor's lamp has been reported, but has not been seen by the author.

These lamps are known to exist in both tin and brass. There are many styles including some without the hat hook. Known brand names include the following:

- Trethaway
- Crown
- Grier Bros.
- B. D. Williams (very rare)
- Various unmarked models



Style: Surveyors
Material: Tin
Maker: Trethaway
Height: 6 3/4"
Owner: Ted Bobrink



UNITED STATES PATENT OFFICE.

DAVID D. WILLIAMS, OF WILKES-BARRÉ, PENNSYLVANIA.

MINER'S LAMP.

SPECIFICATION forming part of Letters Patent No. 252,234, dated January 10, 1882.

Application filed August 16, 1881. (Model.)

To all whom it may concern :

Be it known that I, DAVID D. WILLIAMS, of Wilkes-Barré, in the county of Luzerne, and in the State of Pennsylvania, have invented certain new and useful Improvements in Miners' Lamps; and I do hereby declare that the following is a full, clear, and exact description thereof, reference being had to the accompanying drawings, and to the letters of reference marked thereon, making a part of this specification.

This invention relates to certain improvements in lamps, and is specially designed as a miner's lamp; and it has for its objects to produce a lamp that may be conveniently carried by hand or attached to the miner's hat, and when not in use carried in the pocket without danger of spilling. These objects I attain by the mechanism illustrated in the accompanying drawings, in which—

Figure 1 represents a side elevation of my improved lamp; Fig. 2, a detached sectional view of the filling-tube; and Fig. 3 a vertical sectional view of the lamp.

The letter A indicates the body of the lamp, which is provided with a screw-threaded tube, B, at its top, upon which the screw-threaded cap B', which carries the wick-tube C, is adapted to be secured. The cap B' is provided with a tubular extension, D, which surrounds the wick-tube, and is internally screw-threaded, for the purpose hereinafter described.

At one side the body of the lamp is provided with a short screw-threaded tube, E, in which is adapted to be secured the screw-threaded end of the tube F, which serves as a handle to the lamp.

The letter G indicates a hook secured to the lamp-body, by means of which the lamp may

be handled; and the letter H indicates a filling-tube provided with a cross-bar, I, to which is secured one end of a cord or chain, K, to the other of which is attached a screw-cap, L, by means of which the tube may be closed. The wick is so arranged in the wick tube and bottom of the lamp, as indicated in the drawings, as to pack around the lower end of the wick-tube and prevent the oil from rising too freely in said wick-tube.

The handle, when the lamp is not in use, is placed over the wick-tube and screwed in the threaded extension surrounding said tube, thus forming a cap for the same, and preventing the fluid from spilling when the lamp is not in use.

Having thus described my invention, what I claim, and desire to secure by Letters Patent, is—

1. In combination with the lamp-body and its removable screw-threaded handle, the cap secured thereto, and provided with a screw-threaded extension surrounding the wick, into which the handle is adapted to be screwed to serve as a cap for the wick-tube, substantially as specified.

2. In combination with the body of the lamp, having the tube E and cap B' and its extension D, the detachable screw-threaded handle, adapted to be attached to the lamp-body or secured to the wick-tube, as desired, substantially as and for the purposes specified.

In testimony that I claim the foregoing I have hereunto set my hand this 17th day of June, 1881.

DAVID D. WILLIAMS.

Witnesses:

RICH. J. WILLIAMS,
E. L. EVANS.

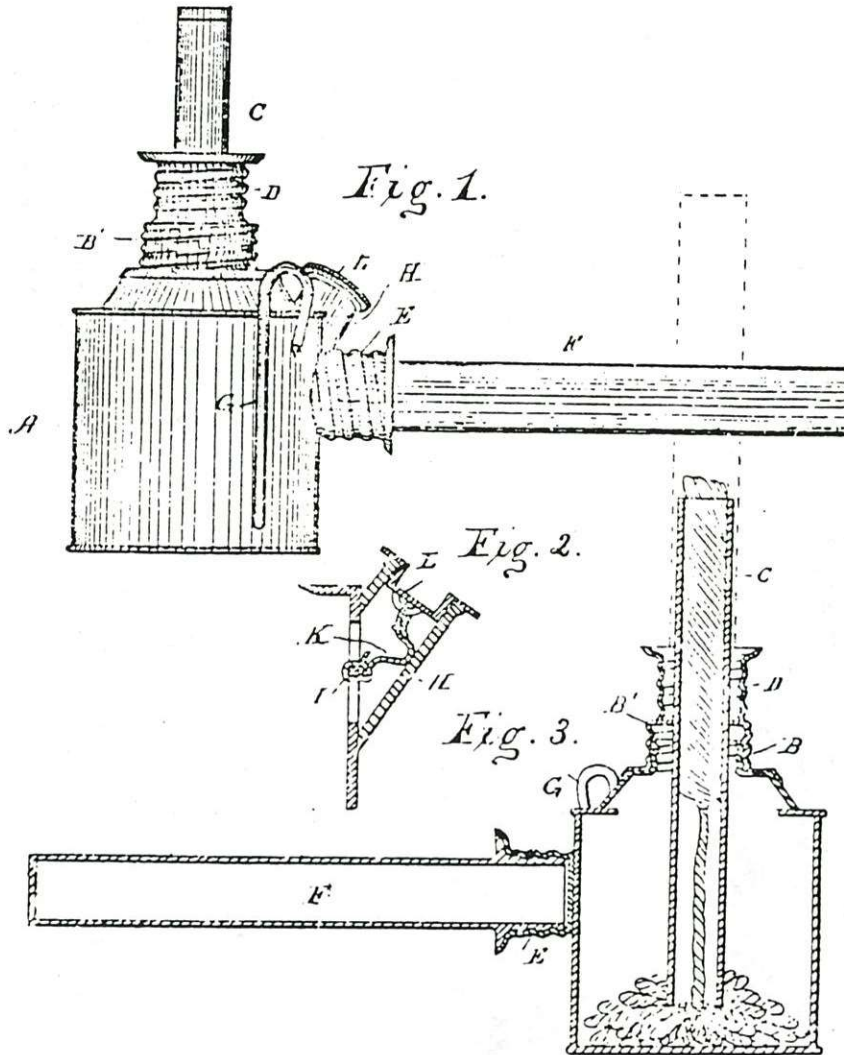
(Model.)

D. D. WILLIAMS.

MINER'S LAMP.

No. 252,284.

Patented Jan. 10, 1882.



Witnesses,
Edwin L. Jewell,

H. Aubrey Toulmin

Inventor,

David D. Williams

By C. M. Alexander,
his Atty.