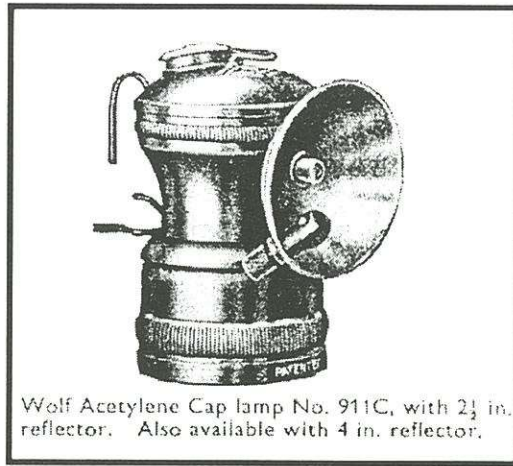
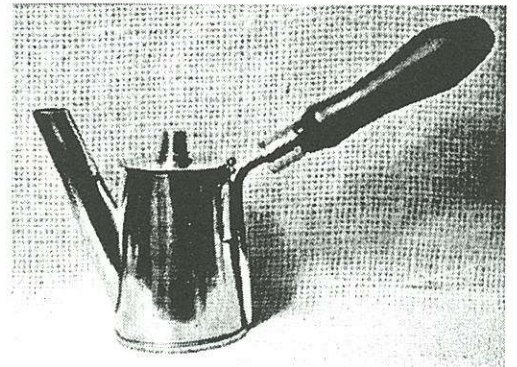
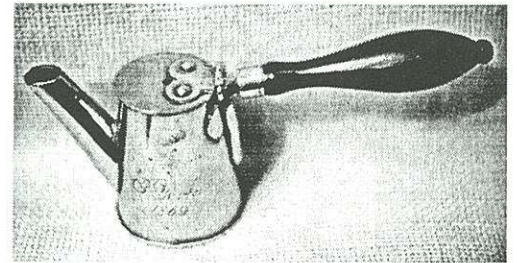


Wolf 911C

Many will recognize this as a Simmons cap lamp, made in USA. You can even make out the diamond-shaped logo on top. However this illustration is from an English Wolf catalog (Wm. Maurice Ltd.), who evidently imported the lamp and called it the Wolf 911C. One would wonder why they didn't import the US-made Wolf which was manufactured during the same time period. Perhaps there was some competition between the two Wolf firms?



Oil Wicks with Wooden Handles



We have all seen oil wick cap lamps with their cap hooks. These brass oil wick lamps were adapted for use with a wooden handle. The lamps are both brass with copper fittings, the two rivets on the cap of one lamp, the cap hinge wire and the handle attachment, where the cap hook is usually attached are all copper. Both lamps are standard size oil wick lamp.

The handles are made of turned wood, black like ebony. There is a brass band at the end of the handle where it attaches to the lamp.

One lamp has an unusual vent tube on the cap. The other lamp is beautifully engraved with P. York 1869. Any ideas as to their origin?

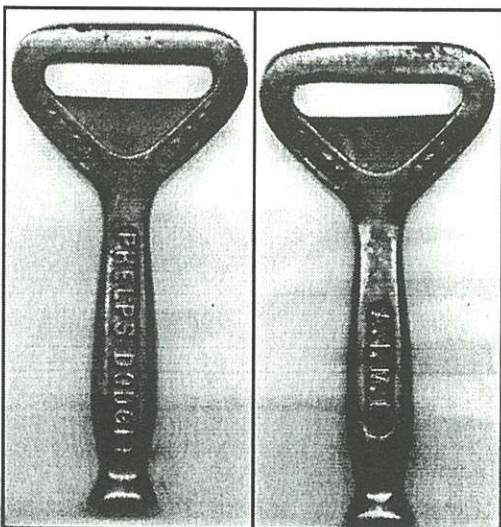
Dave Johnson.

Mini-twister

This small twist blaster has the "Permissible" logo - U. S. Bureau of Mines. No maker. Marked "PAT." No date. stamped "278" (not factory) on bottom. Do you think this could be mining or??



Tom Stranko



Bottle Opener?

This is all brass (or bronze?) and is about five inches long. It has 1871-1946 A.I.M.E. cast into one side and 1834-1946 Phelps Dodge on the other side. It would appear that this commemorative piece dates to 1946, but what is it?