

# I. E. Swift Co. Oil Wick Lamp

by Dave Johnson

**E**stablished in 1869 to serve the mines and railv ays of the Marquette Iron range, the I. E. Swift Co. of Ishpeming, Michigan became the largest supply house in the Upper Peninsula. By 1885 the firm had expanded to sell mill supplies, heavy hardware, steel and lubricating oil, in addition to mine and railway supplies. The firm further expanded before 1900 to handle building and shelf hardware, house furnishings, paints, glass and other products.



Houghton, Mich., 10/21/01 190...

Sold to Quincy Mining Co.

#5845

*I. E. Swift Co.,  
Mine, Mill and Railway Supplies.*

*Builders and Shelf Hardware.  
House Furnishings, Paints, Oils, Glass, Etc.*

ORIGINAL

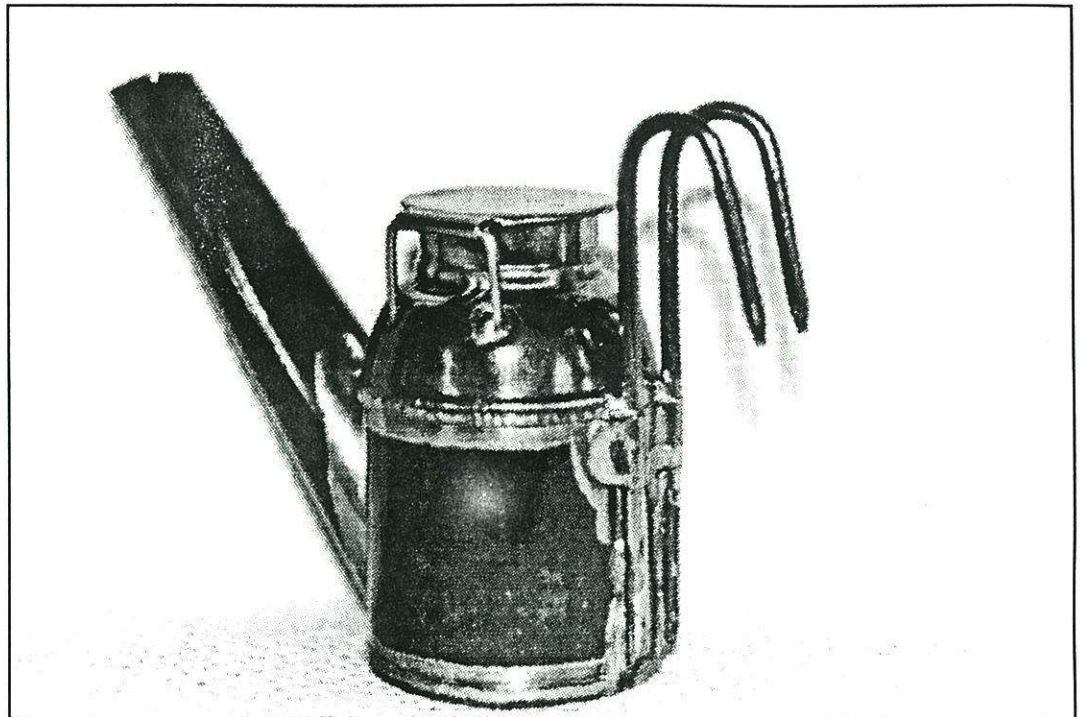
TERMS 30-DAYS NET CASH.

PRICES SUBJECT TO CHANGE WITHOUT NOTICE.

By 1900, I. E. Swift expanded its operation to include a supply house in Houghton to serve the Michigan copper mines and mills. The firm also served the iron mines of Michigan's Gogebic Iron Range.

I. E. Swift offered an oil wick lamp under its firm name. Produced by Leonard Bros. of Scranton, Pennsylvania, this lamp follows the classic Leonard Bros. style. The lamp stands 2 1/2" tall to the top of the cap and is made of tin, with a brass collar. The single spout is 3 7/16" in length. The most interesting feature of this lamp is the double wire cap hooks, a feature found on extremely few oil wicks.

Does anyone else own a different version of the I. E. Swift lamp?



**Sources:**

Ishpeming City Directory 1889.

I. E. Swift Letterheads: 1885, 1892, 1899, 1901 from author's collection.

Heavy Hardware, Lubricating Oils.	<h1>I. E. Swift,</h1> <p>2, 4 AND 6 BANK STREET,</p>	MINE, MILL AND RAILWAY SUPPLIES.
<p>Ishpeming, Mich., <i>9/30</i> 188<i>8</i></p>		