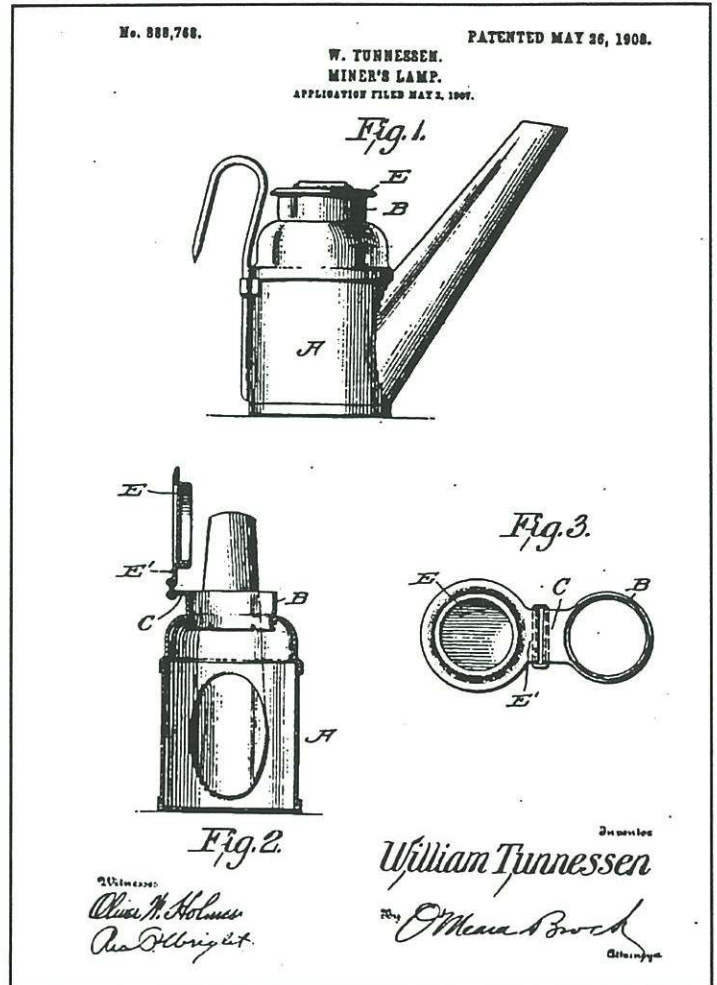


The C. George - Tunnesson - Crown Trademark Connection

Dave Johnson

Christopher George of Hazleton, Pennsylvania was a manufacturer of mine lamps as early as 1884, according to the Hazleton City Directory which listed him as a lampmaker. The 1897 City Directory continued to list George as a manufacturer of mine lamps. The 1902 Hazleton City Directory lists Christopher George as a tinsmith.

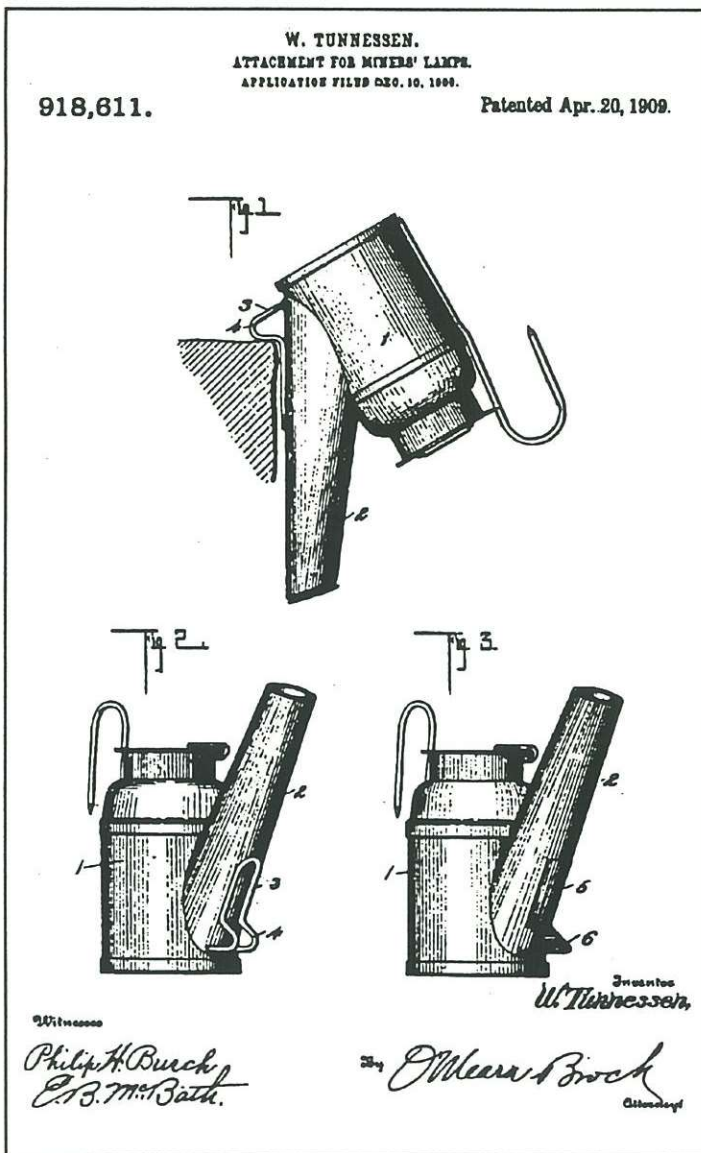
In 1908 George sold his firm and the use of his name to William Tunnessen, of Hazleton. Tunnessen had two lamp patents dated May 26, 1908 and April 20, 1909. He



Above: Tunnessen patent for miner's oil wick lamp.
 Left: Tunnessen patent for attachment to oil wick lamp.

also owned the CROWN trademark. Little information is available on William Tunnessen. He appears in the Hazleton City Directory 1909.

Apparently, Tunnessen's firm was a family enterprise. The 1909 City Directory lists the Tunnessen Mining Lamp Co. with William Tunnessen as Manager at the corner of McKinley and 7th Street. Joseph Tunnessen is listed as a tinsmith and boarder at 557 Peace Street along with his wife Eliza. Henry Tunnessen is also listed as a tinsmith and boarder at 557 Peace Street. I was unable to



determine the relationship between William, Henry and Joseph Tunnessen.

Apparently, as the use of oil wicks decreased Tunnessen abandoned the mine lamp business and began producing auto parts. The 1925 Hazleton City Directory lists William Tunnessen as a manufacturer of auto parts.

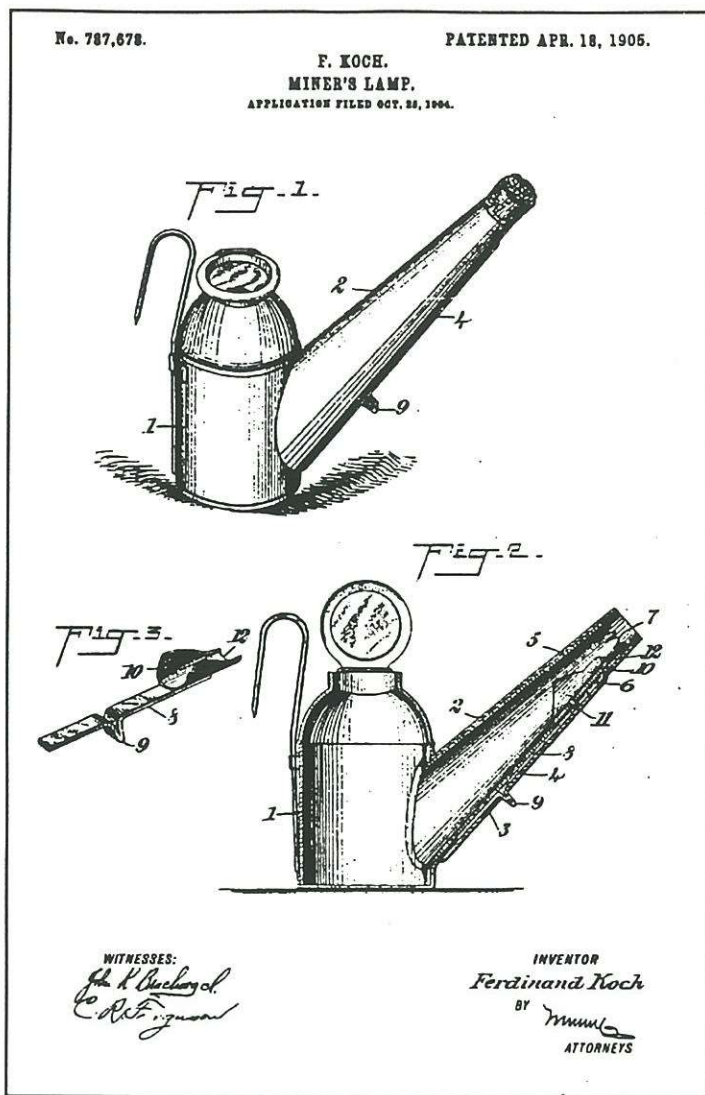
There are presently only two known examples of an oil wick marked with Tunnessen's name - one a mule lamp and the other a face lamp in my collection. The stamping on this face lamp references the Koch Patent and the



Tin face lamp marked: Mfd. By W. TUNNESSEN, with stamping J.

small oblong tab soldered over the wire hook to provide additional strength to the solder that runs the length of the hook down the back of the font. The major feature of the Koch Patent is the wick raiser mechanism much like that featured in the J. R. Watts Perfection Patent of July 5, 1892 (See EUREKA #13). Judging by the extreme rarity of marked Tunnessen lamps it is unlikely that he was a prolific producer prior to the introduction of his CROWN Trademark in 1908.

Prior to 1908 C. GEORGE lamps were marked with the C. GEORGE stamped on the font with just the name and Hazleton PA alone or enclosed in a box. Beginning in 1908 the C. GEORGE lamps first were stamped with PATENT APPLIED FOR or PAT. APPLIED FOR. This was followed by a stamping with PAT. MAY 26, 08,



Koch patent for miner's oil wick lamp.

OTHER PAT. PENDING. The last, and most common, stamping is PAT. MAY 26, 08 & APRIL 20, 09 on the lid with "CROWN" REGISTERED TRADEMARK on the bottom of the font.

The 1908 patent was for the separately applied collar cap and hinge seen CROWN oil wicks. This style cap (turned down edge and indented ring) is seen on early CROWN lamps. This lamp is different in design than the original C. GEORGE lamps.

The 1909 patent features the flat smooth cap and wire "spout guard" boot kick found on most CROWN lamps. While the patent shows the commonly seen vertical font, there are two varieties of slope-sided font lamps produced under the CROWN Trademark. The 1909 patent

Directory of Lamp Stampings

C. GEORGE
HAZLETON, PA.

A

C. GEORGE
HAZLETON, PA

B

CROWN

C

PAT. APPLIED FOR

D

PATENT APPLIED FOR

E

PAT. MAY 26, 08 OTHER PAT. PENDING

F

PAT. MAY 26, 08 & APRIL 20, 09

G

REGISTERED
TRADE
"CROWN"
MARK
PAT. OFFICE

H

REGISTERED
"CROWN"
TRADE MARK
"CROWN"

I

KOCH PAT. APR. 18, 1905 OTHER PAT. PENDING
MFD. BY
W. TUNNESSEN
HAZLETON, PA.

J



Above: Crown copper screw-lid face lamp with stamping I.



*Left: shielded driver's lamp with stamping G and I.
Right: shielded tin driver's lamp w/ brass collar, stamping G and I.*

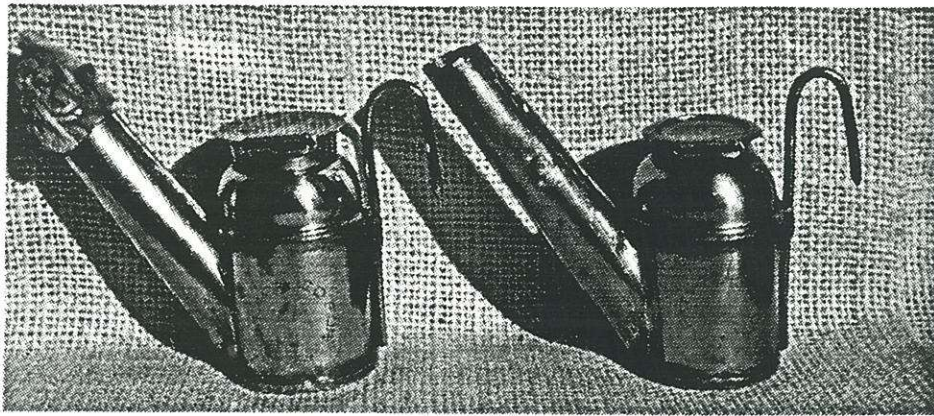
Below: CROWN brass "surveyor's lamp", stamping I.



shows the commonly seen wire spout guard as well as a solid sleet guard that I have yet to see on a lamp.

Also produced under the CROWN label were a variety of what are commonly known as "surveyors" lamps. These were produced in tin, brass and copper, as well as in bi-metal combinations.

The Tunnessen CROWN label lamps were produced in a large variety of models and metal combinations, second only to Trethaway Bros. in number. Tunnessen produced CROWN label lamps for private labels such as Cambria-Central Supply Co., Cruso - H.S.B. & Co., F. Beiter, General Supply Co., M. & O., Punxsutawney Hardware Co., Logan-Gregg Hardware Co. and Tracy Wells Co.



Left: brass face lamp with stamping D on cap and font.

Right: brass face lamp with stamping B and D.



Left: brass face lamp with stamping B.

Right: tri-metal face lamp with stamping G and I.



C. George driver's lamp (left) and two face lamps, all with stamping B. C. George miniature in center.



Left: tin face lamp w/ stamping A.. Center: tin face lamp with stamping B and E. Right: C. George Driver's lamp w/ one piece collar/shoulder, stamping B. Similar to lamp in center with separately applied collar.

Left: shielded tin driver's lamp with stamping B.

Right: shielded tin driver's lamp with brass collar and stamping G and H.



Left: copper and brass face lamp w/ stamping B, G, and I.

Right: tin face lamp with brass collar and stamping G and I.



Left: tri-metal face lamp with stamping G and I.

Tri-metal face lamp with stamping G and I.





Left: tin driver's lamp with brass dome lid and collar, stamping G and I.

Right: tin driver's lamp with brass collar and stamping G and I.



Left: tri-metal face lamp, stamping C.

Right: tin face lamp with brass collar and stamping F.



Left: tin face lamp with stamping A.

Right: tin driver's lamp with brass collar and stamping G and I.



Left: tri-metal driver's lamp with stamping G and I.

Right: tin driver's lamp with brass collar and stamping G and I.

*Left: tin driver's lamp
with stamping B and E.*



*Right: Tri-metal driver's
lamp with stamping G
and I.*

*Left: CROWN mule
lamp with stamping G.*



*Right: Unmarked face
lamp.*

*Left: tin face lamp with
brass collar and cap and
stamping B, G, and I.*



*Right: copper and brass
face lamp with stamping
G and I.*