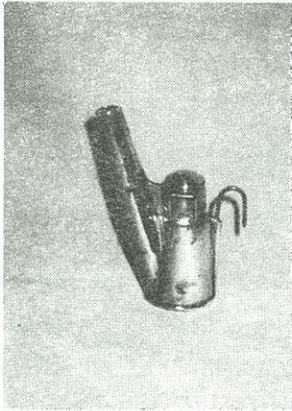


# E. F. Long Oil Wick Lamp

by Paul and Nancy Hyatt



It seems when those of us in the mining artifact collecting fraternity find that our hunt is successful and can add a new piece to our collection, we generally know what it is, but not *who* it is. If we are still lucky, there may be a clue to start us on the road to a friendly introduction. One of the best clues, sometimes even better than a name, is a patent date.

As you've probably guessed by now, just such a situation arose in the form of a choice mining artifact we recently found. It was a miner's oil wick – all brass including the hook, with a unique domed lid. Its measurements are as follows:

Bottom diameter: 1 3/4"

Bottom to top of collar: 2 15/16"

Bottom to top of spout: 4 3/4"

Spout length: 4 3/4"

The lamp was constructed differently from others. The font, spout, and hook receptacle are formed in left and right mirror image shells similar to candy molds. These two halves are joined together with a crimped seam.

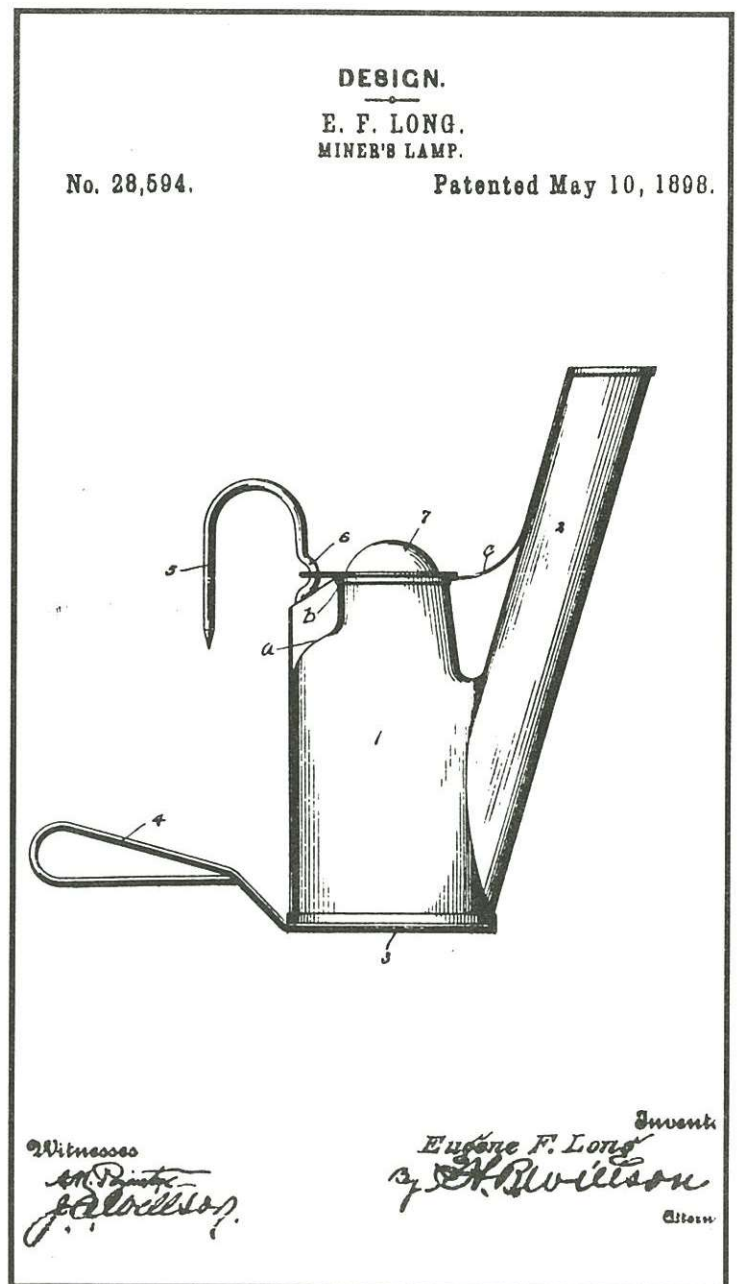
The lid utilizes a modified U-shaped connecting brace and hinge to avoid piercing the font. The hinge passes through both sides of the lid, and terminates in a thumb tab beyond the edge.



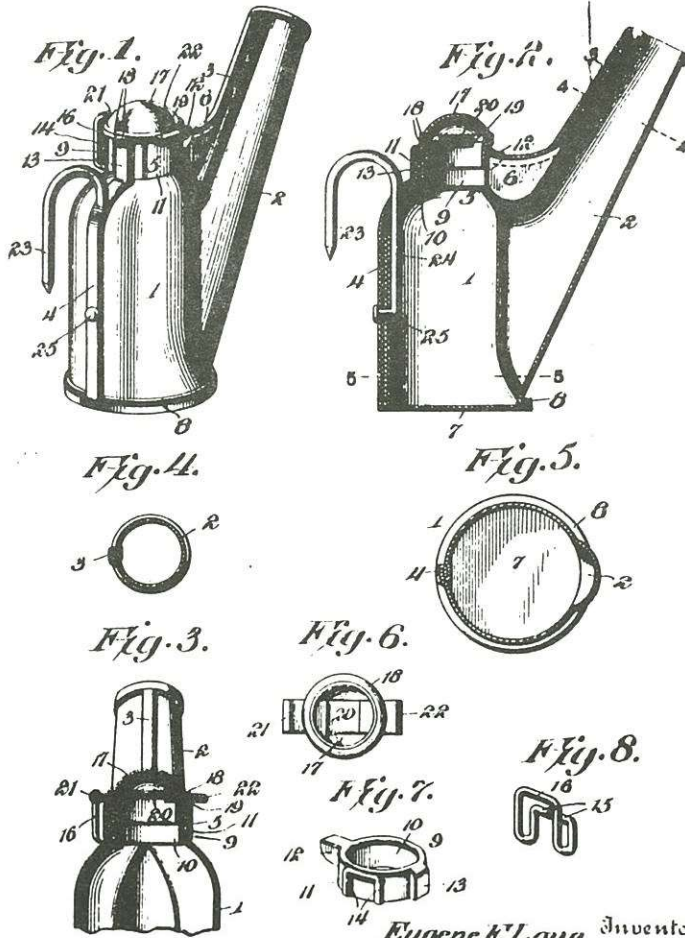
Clues to *who* began with two patent dates stamped in a circle on the bottom. As it turned out, both patents were granted to Eugene F. Long of Scranton, PA. The May 10, 1898 date (U.S. Pat. No. 28,594) pertained only to the appearance or "ornamental design" of the lamp. Like other **Design Patents**, the text was very

brief: less than half a page. The second date of May 30, 1905 for patent No. 791,296 was almost three pages of description! This was a **Letters Patent** which covered the actual mechanics of the invention, including the unusual lid arrangement.

We are still pursuing information on this oil wick. Did E. F. Long manufacture this lamp, or did someone else? Any information that someone may have or find in the future would be greatly appreciated.

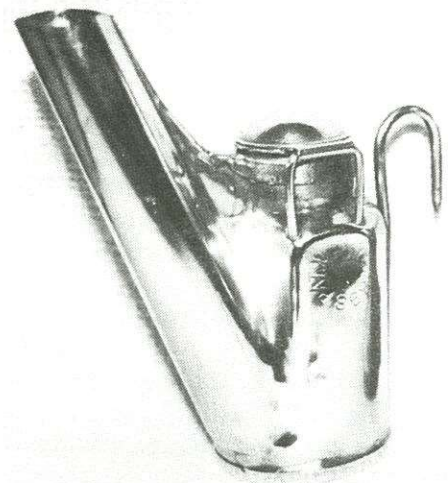


E. F. LONG.  
MINER'S LAMP.  
APPLICATION FILED AUG. 9, 1904.



Witnesses  
*Howard D. Carr*  
*W. S. Wiley*

Eugene F. Long, Inventor,  
*E. F. Long*  
 Attorney



Shown above is E. F. Long's second Letters Patent, illustrating a more detailed operation of the lamp. It shows the unique water door hinge not evident on the earlier Design Patent.

The photos to the right are of two other E. F. Long lamps from the Dave Johnson collection. Instead of having two patent dates stamped into the bottom, these lamps have but one date (the earlier) stamped circularly into a flat section on the side. The two lamps shown differ only in their font size. They are pictured from

opposite sides. As one can see, this lamp looks quite different depending on which side it is viewed from. As the later patent date is absent, so too is the unique hinge mechanism on this lamp. The photos show a much more conventional U-bar arrangement for the hinge.

Thus far only these three varieties have surfaced. Another one may exist, perhaps the earliest of all: a lamp that incorporates the strange carrying handle shown on the earlier patent.