


# PHILLIPS ASBESTOS MINES

PRODUCERS OF CRUDES & FIBREIZED ASBESTOS  
THE WORLD'S FINEST FIBRE

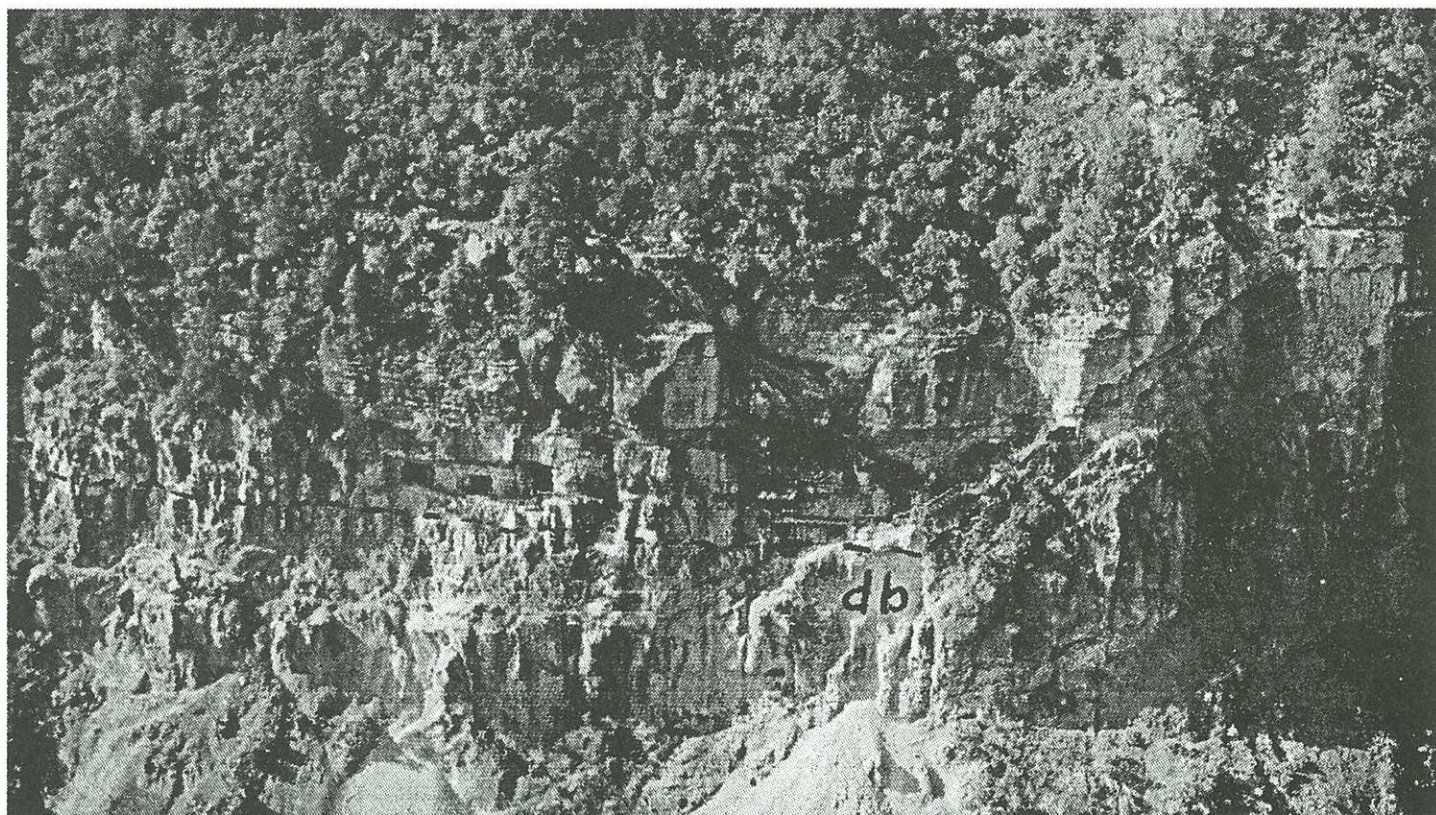
MINES AND MILLS IN  
GILA COUNTY, ARIZONA

CABLE ADDRESS  
PHILASB

  
DRAWER 71  
GLOBE, ARIZONA  
U. S. A.

## Mining and Murder

*by Todd Town*

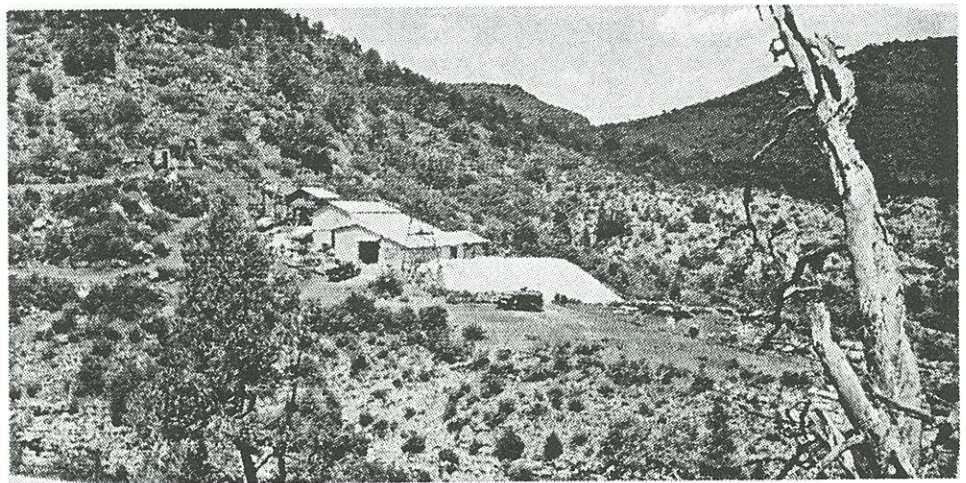


*The Ladder Mine: accessible only by ladder, this cliffside mine was the site of Guy Phillip's fabulous discovery.*

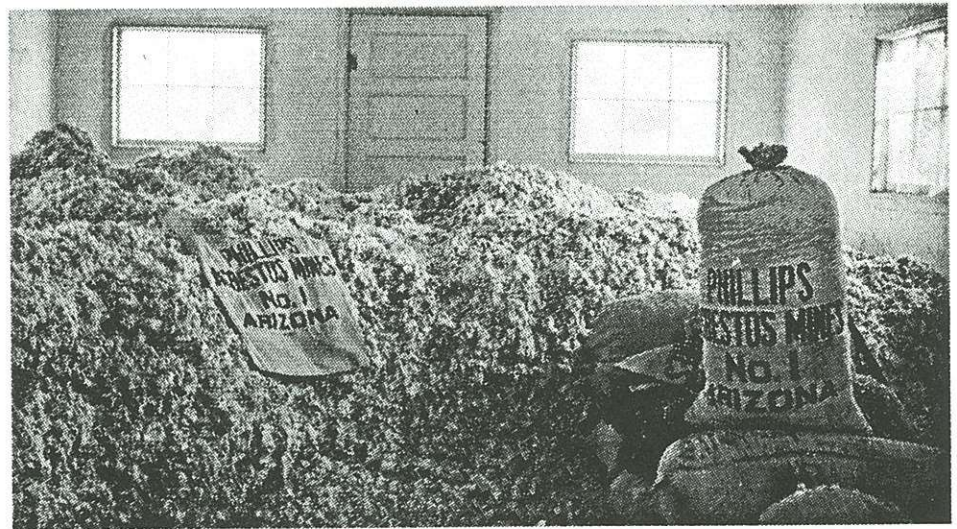
**R**uby Phillips got up at 6:00 a.m. on the morning of February 7, 1962. She made coffee and took a cup to her husband, Guy Phillips, who was still in bed. The morning started off on a nice domestic note. They drank a cup together while Guy got dressed. After coffee and morning small talk, Guy Phillips walked out his front door and into his mining empire. 43 miles from the nearest town of Globe, Arizona and six miles to a paved road, Guy had what dreams are made of. Remote living, a prosperous mine

and mill and cheap labor, in the way of Apache Indians. Guy contacted his foreman Jackson Henry and lined him out for the upcoming day's work in the mine and mill. Guy retreated back to his house to a waiting breakfast. Ruby was dressed and hurrying herself for her weekly Wednesday trip to town for supplies for them and the many mine workers that lived on the property. After boiling hot dogs for Guy's lunch, she kissed him good-bye and started on her way to town.

Guy sat at his kitchen table alone and only had to look from his window to see his accomplishments so far. In back of his home, about 20 steps, sat his plush summer home that he and Ruby would move to when the summer heat became too great. In front of him lay a compound of warehouses, single roomed homes, for Indian miners, office and Guy's own one room jail. Two miles down the road in Phillips Canyon sat the heart of the empire, Guy's Ladder Mine and the Grand View mine, plus a fully operating mill with loading docks, ore gondola and all the equipment needed



*Phillips' Asbestor Mill in full production. Mill was located directly across from the ladder Mine with a deep canyon in between. Gondola head frames can be seen in the photo.*



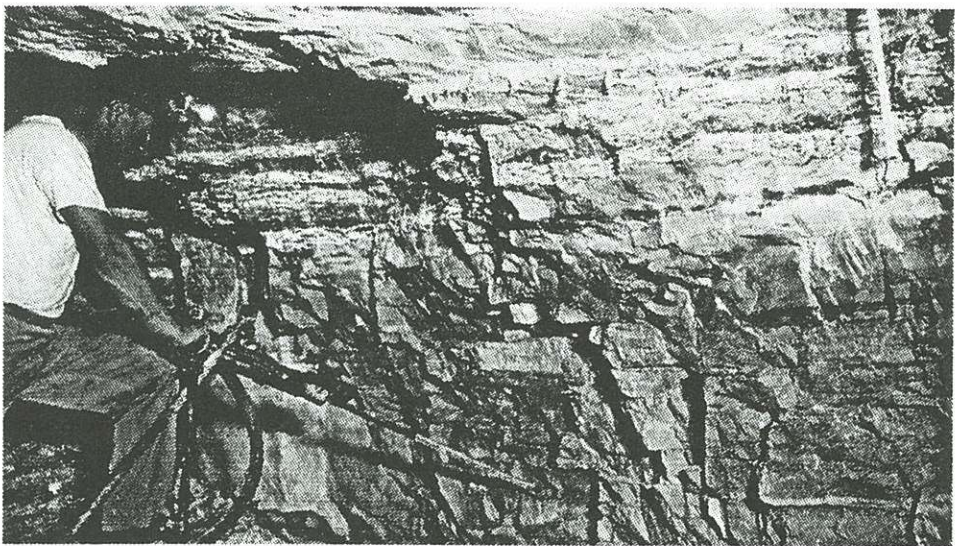
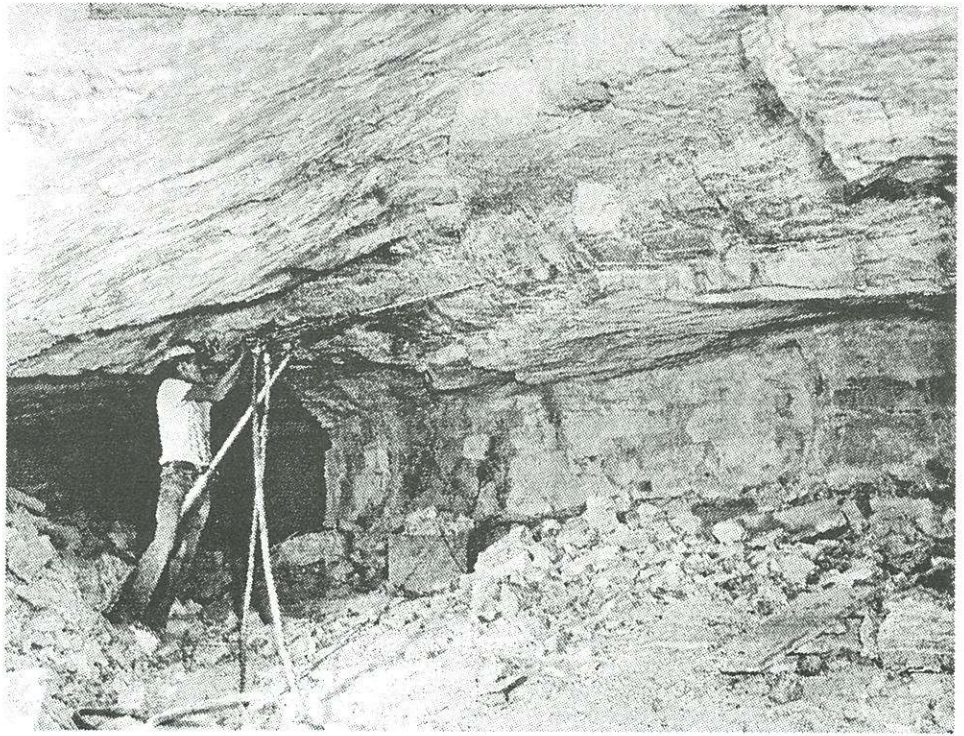
*Finished product: crude #1 asbestos.*



*Chapo, still carrying timbers the old-fashioned way.*

to run an underground mining operation. Guy found it, built it and became very rich from it.

The view for Guy was much different in his youth. His father died when he was 12, leaving Guy, his mother and his sister in poverty. His mother cleaned homes in Miami and Guy worked after school at the local Midway Service Station. He managed to graduate from Miami High School, in 1926. After graduation, Guy found employment as a miner in Superior, for the Magma Copper Company. He worked only a short time in the underground copper mine before he found new work in an asbestos mine in the Salt River Canyon 40 miles north of Globe. Working for this mine, Guy would learn the skills to reward him with wealth. Like a lot of small mines of that period, this one was short lived and the miners found themselves out of paying work. All of the miners left for other employment, but Guy and one other man stayed on as watchmen to guard the mining company's equipment. Guy and his friend were not content with



*Drilling the stopes.*

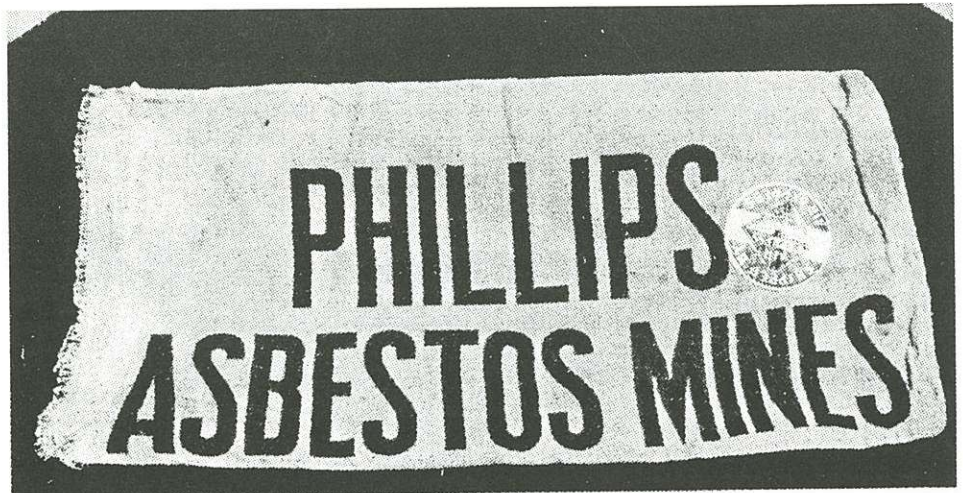
idol watching. They soon were out prospecting for new asbestos deposits. The Salt River Canyon, with its sheer cliffs and narrow peninsulas drop sharply into the Salt River. From here Guy and his partner lowered themselves on

ropes and with hand steel and a satchel of powder and caps. They drilled into the promising outcrops of fiber. His partner soon became tired of work with no gain and quit claimed all his interest in the prospecting adventure to Guy. Soon



*Phillips' asbestos mine had many give aways that pop up from time to time. A couple of pocket knives and a lead pencil.*

after their separation, the treasures of the earth revealed themselves to Guy in a fabulous ore body of asbestos. With the discovery of the ore body, Guy secured a loan, and with back wages owed him by the defunct mining company, purchased the mill and underground machinery. Guy's first agenda was to move the machinery to its new location across a few canyons and closer to his new find of asbestos. With the mill moved and the underground mine producing ore, Guy was making regular shipments to customers. World War II was the big strike for the small miners, with the Government Buying Program, that provided the government with the



*Sample bag used to ship ore to prospective buyers. Guy wanted his name to be seen and remembered.*

essential raw materials to wage war.

Here is where Guy Phillips became rich, the U.S. Government bought all he could produce. What a deal! After the war and up until his death, Guy lived and ran his mining empire just a short walk from

his mill and the portals of his mines. It was a well known fact that Guy was rude, blunt and undiplomatic. He had a habit of saying things to people, knowing it would hurt. He was eccentric and very shrewd with his business. Guy was not liked or trusted by many, but he was rich, with

an estate estimated at \$500,000.00 in 1962.

Guy had made it from the sweat of his brow and the perseverance of his eccentric lifestyle and behavior. But now he was in for the fight of his life. With the noise of the back door opening, Guy knew somebody was after him. He retreated to his bed room and armed himself with a .38 pistol. Looking from the doorway of his bedroom Guy saw his attacker and made a dash for the living room. The intruder shot first and missed, hitting the archway. The second slug from the .45 caught Guy in his left shoulder and passed through his body. Mortally wounded and on the floor Guy crawled to the living room and fired two shots from the floor, both missing. At this point, Guy's adversary shot him in the face. The bullet ended his life. A little after 5:00 p.m. on that day Ruby Phillips pulled up to her white stucco house high in the hills of Globe and discovered her murdered husband on the living room floor.

The very personality that had made Guy a successful and wealthy miner may have been the cause of his death. Disliked by most and envied by many, Guy had built a mining empire in his little section of Arizona. Ruby Phillips was charged with her husband's murder and brought to trial. A deadlocked jury could not agree on her guilt or innocence. Ruby Phillips died a few years later in Chicago, Illinois. Thirty-five years since the murder, it remains unsolved.

## **PHILLIPS ASBESTOS MINES**

**Producers of**

**CRUDES**

**and**

**Fiberized Asbestos**

**The World's Finest Fibre**



**DRAWER 71**

**GLOBE, ARIZONA**

*Mines and Mills in Gila Co., Arizona*

*Advertisement from "Asbestos" brochure,  
1948.*

### **References:**

- (1) Startling Detective May 1962
- (2) Odie Shipp (brother-in-law of Guy Phillips)