

COLLECTOR'S FOCUS

Steve Rush

Beginning with this column the 'Review' will showcase a mining artifact collector, providing a little biographical information about both the collector and the collection and how it is displayed.

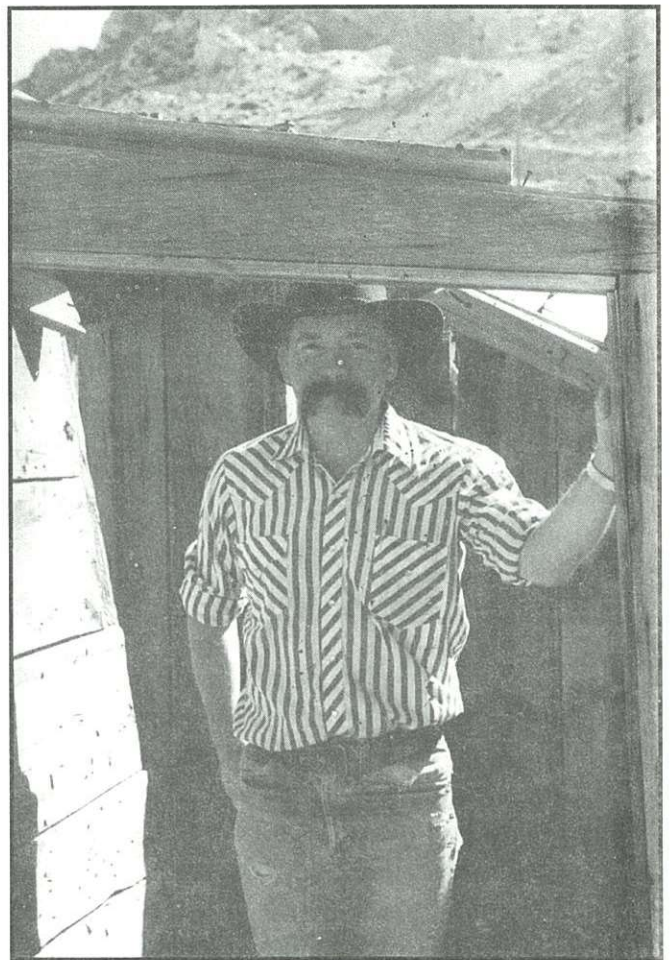
THE RUSH ESTATE

If you're like me you are happy to have a little showcase or a portion of the garage to store your 'funny mining things'. Steve Rush has a more understanding wife and he and Malia have adorned their house with a variety of western memorabilia, emphasizing Steve's great mining artifact collection. Nestled in the foothills of Denver, stately Rush manor consists of a wooded lot complete with stables, stream and pond, and house that looks from a distance like a mill and at over 5000 square feet could easily be one.

Steve's serious interest in mining artifacts began in 1990, but as he put it -he's been collecting rusty stuff since he was twelve years old. His primary motivation is a sense of preservation of mining heritage and its tangible legacy-artifacts. His priciple areas of interest are blasting related items and larger pieces of equipment, used to recreate scenes in his yard. Like many of us collectors, Steve is employed in a field related to the mining and construction industry and is the vice-president of a geotechnical company in Denver.

Of particular interest in his collection are the following items: a Fielding and Peterson folding candlestick, a John Raab stamped candlestick, a Comstock type reciprocating candlestick, California Cap tin with Columbia Powder Co. label, a brown and white 25 count Hercules cap tin, and a ten count yellow Hercules cap tin.

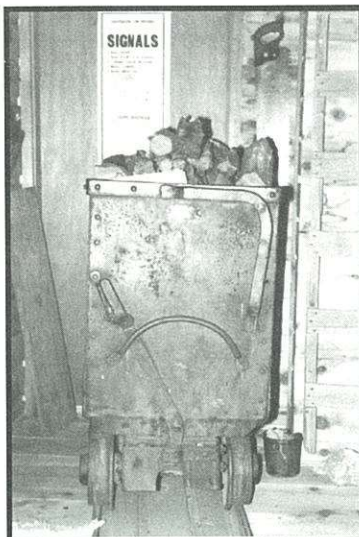
Steve and Malia often play hosts to itinerant artifact collectors or geo-types and would welcome those who would like to see their treasures on display. Please give them lots of notice and try not to stay more than a couple of months. They can be reached at 31112 Shadow Mtn. Dr., Conifer, CO. 80433, 303-670-9158.



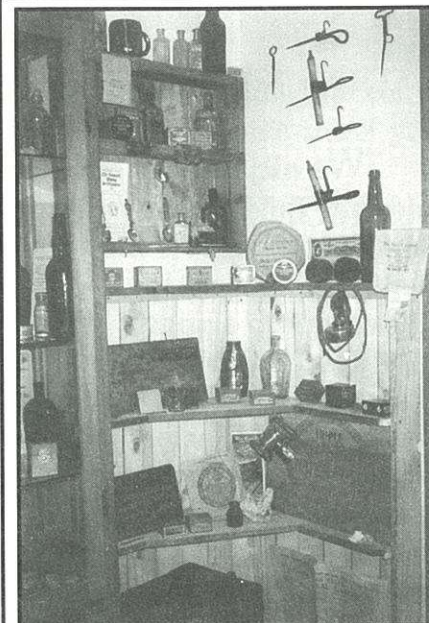
Hi... Steve Rush here at Cerro Gordo. It's a great place to contemplate our history. And speaking of history, I'd like to invite you to take a quick photo tour of my place in Conifer, Colorado.



Here's some powder boxes and one of my display cases.



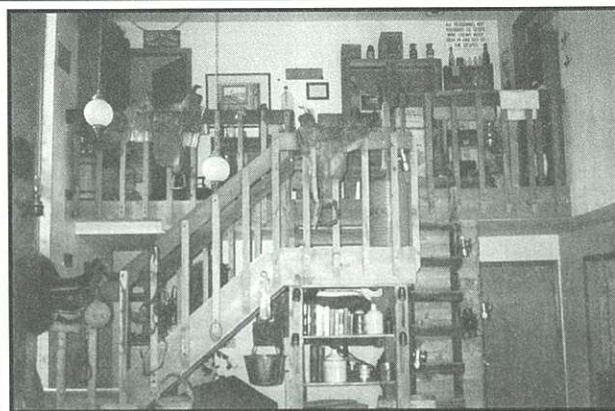
Entry into the "Rush Homestead". A lot of firewood can be stored in one of these cars. The car & track was Malias idea and design... How lucky can a guy get?



Over here are some cap tins, fuse wrappers, old bottles and candlesticks.



Display case with more cap tins, candle sticks and other cool stuff.



Western memorabilia adorns the staircase in the living room.



A mining scene in the back yard.



My house is reminiscent of a mill in outward appearance and the mining equipment looks right at home