

## COLLECTOR'S FOCUS

By Steve Rush

### Jim Swallow

The home of Jim and Carol Swallow in Sunnyvale, California, reposes among its neighbors in elegant style. Amid the manicured yards and flower gardens, no clues may be found to inform the casual observer that "a mining artifact collector lives here".

Knock on the door, and Jim will greet you with a huge grin and a beer. Step inside, and you will find yourself surrounded by hundreds of mining artifacts and a general ambiance of mining history. My kind of place!

Jim has been collecting for a number of years, and is an often seen regular at Errol Christmans gatherings. Living in the Bay Area also helps, with most towns having their beginnings as supply houses to the California Gold Rush. Within a nearby radius, the towns of Hercules, Giant and Livermore held huge manufacturing plants specific to the mining trade.

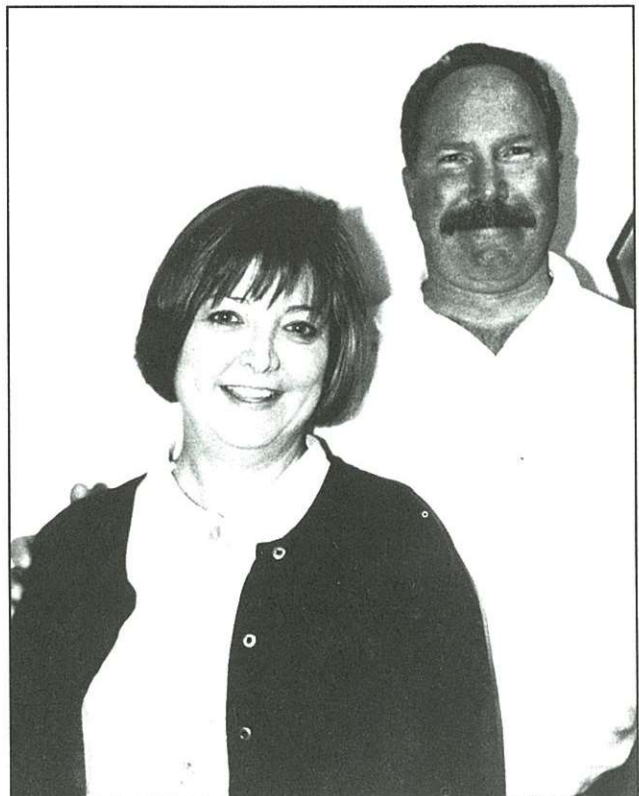
Early on, Jim specialized in collecting blasting machines due in part to their accessibility and "they just looked great". His shelves presently hold twenty six large wooden blasting machines, six hand crank machines for one to ten cap capacity, one side crank machine and two miniature blasting machines crafted by the White Brothers of California.

Rare and unusually manufactured machines include three different Schneider Brothers, and Aetna Powder Company Lion Brand No. 1 and No. 3, a very early H.

Julias Smith, and an extremely rare California Electric Works. Other companies represented include Trojan, Hercules, Atlas, DuPont, Gold Medal and New York.

Jim has the eye of a master craftsman, often taking a worn and weathered wooden box in hand to refinish it to it's original luster. Countless hours have been spent on the display shelves and custom lighting here as well.

As can be seen in the accompanying photographs, Jim no longer limits his collecting talents to just blasting machines. Many different candlesticks, carbide lamps, blasting related signs and tins, and dynamite boxes share space. Rare mining candle



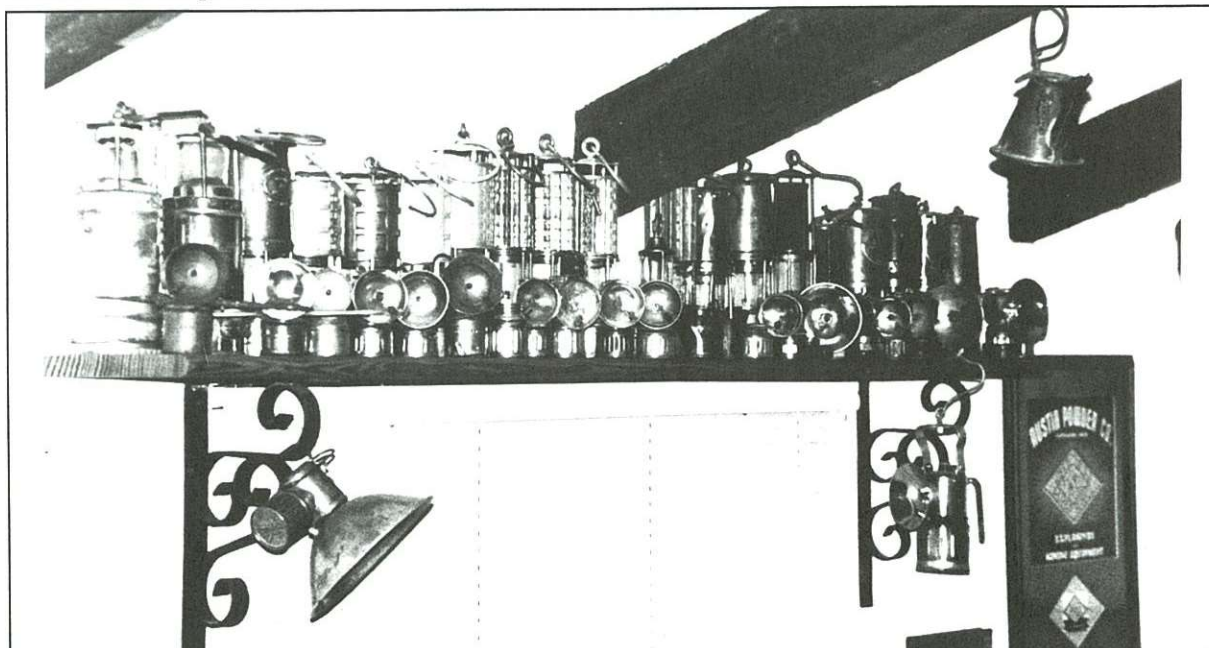


Shelves stacked with many brands and several sizes of blasting machines.

boxes have even begun showing up now.

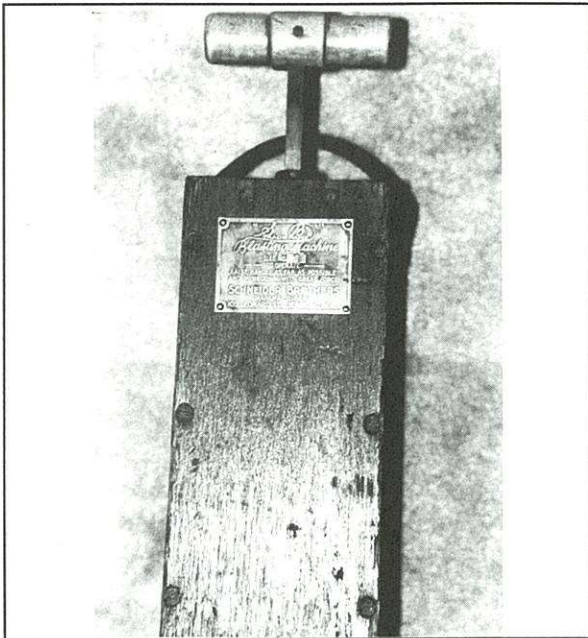
Next time you happen to find yourself in the Bay Area, give Jim a call. He and Carol will be pleased to share an afternoon

with you, your wondering eye will not soon forget the fantastic artifacts and the beer is always cold. Jim can be reached at (408) 733-2512.

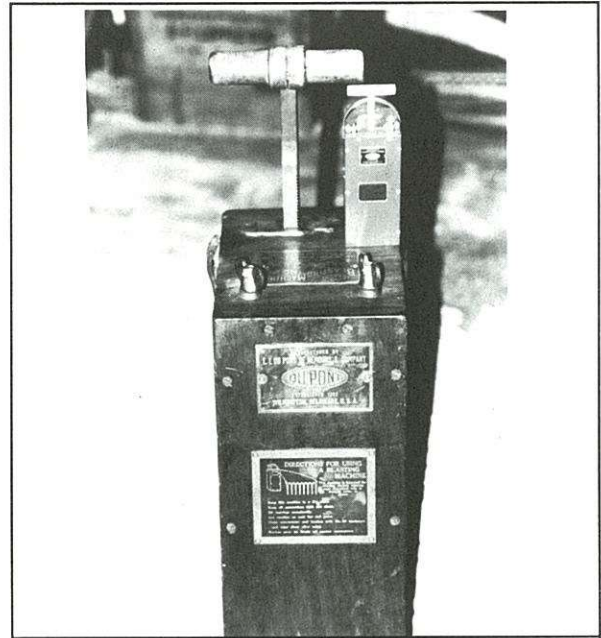


Rare safety lamps and carbide lamps share space with the blasting machines.

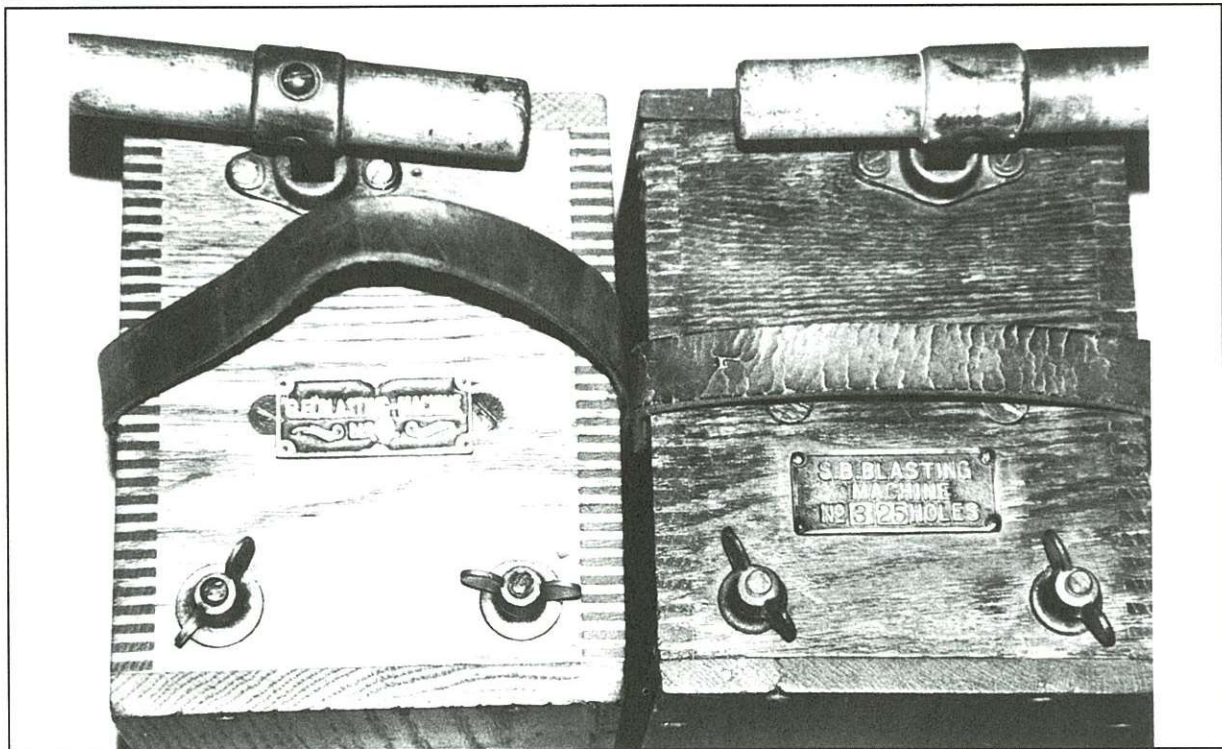




Schneider Brothers blasting machine. Most machines are only found with a brass tag designating it "S.B."

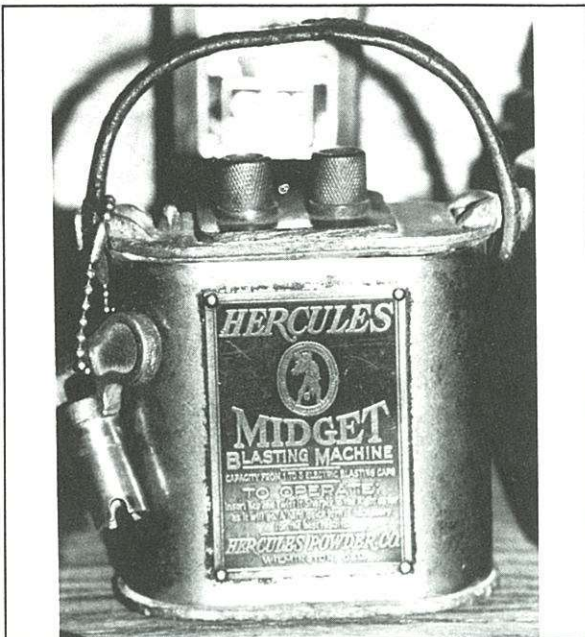


DuPont blasting machine with a White Brothers miniature presiding beside the rack bar.



Two different S.B. blasting machines.





Rare Hercules Midget hand blaster for One to Five caps.



Extremely rare California Electric Works Blasting machine brass tag.



Candle boxes and dynamite boxes fill out space among other mining artifacts.



Lunch buckets, candle sticks and Blasting machines on a back wall.