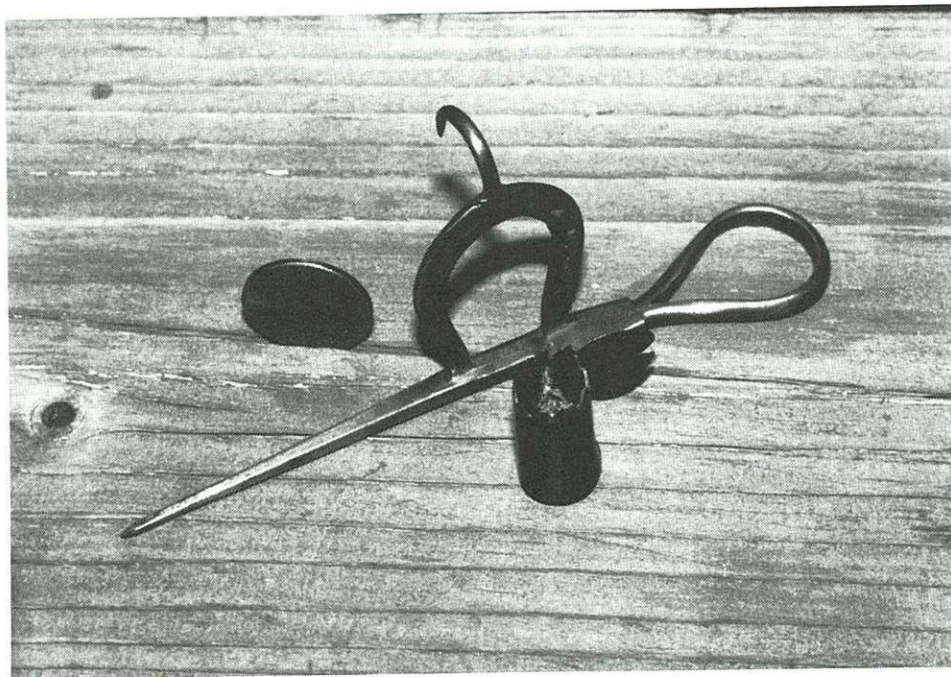


Snell and Steel EverReady

One of the more interesting events at the Eastern Reunion in Morgantown was lining up lamps and comparing them. How about the difference between a Snell cap lamp and an all steel EverReady? After you stop drooling, note the differences in water tank size, threads, and lamp bottoms. See also *Eureka!* No. 1 for another variation in Snell bottoms, although the stamping is the same. The similarities in overall design, especially the hook placement, water door, and the side lever water feed suggest a single manufacturer.



Miniature Candlestick

Shown here, is Rick Yarborough's miniature stick. It was photographed at Errol Christman's June Swap Meet. A penny sits beside it for scale.