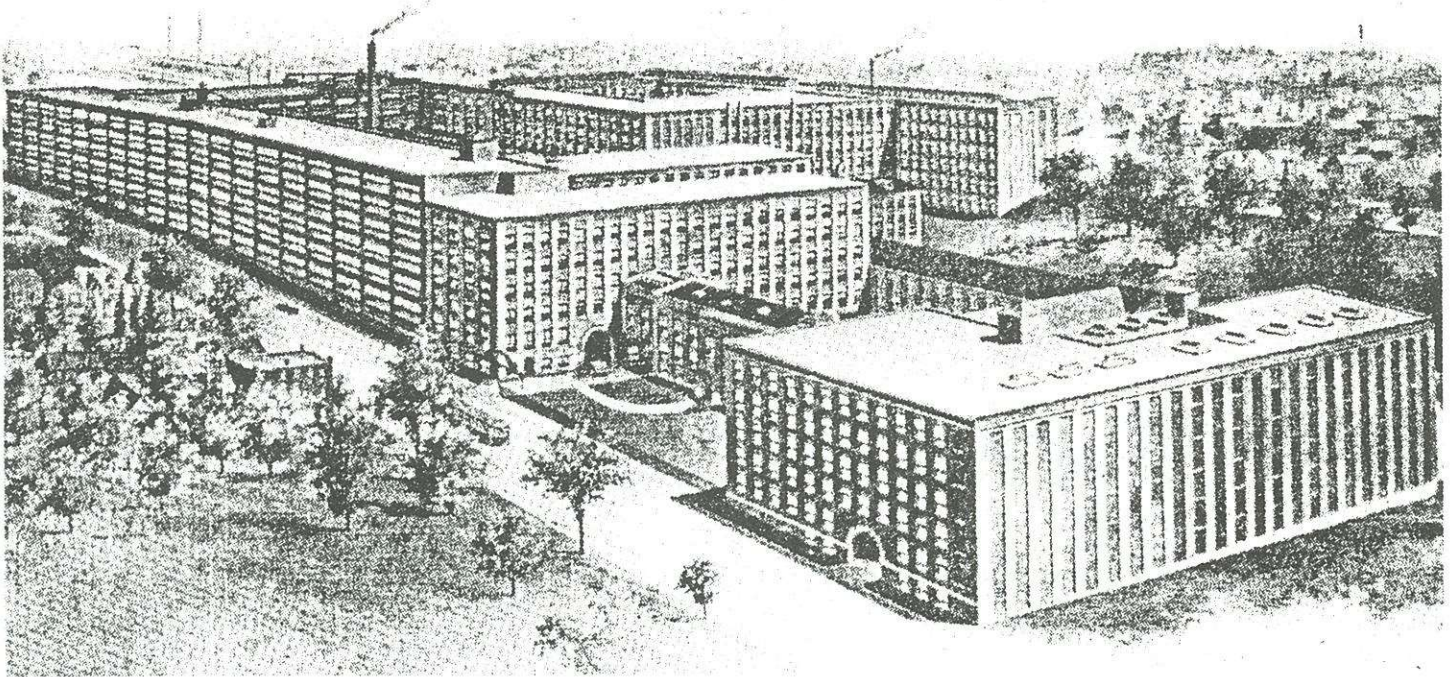
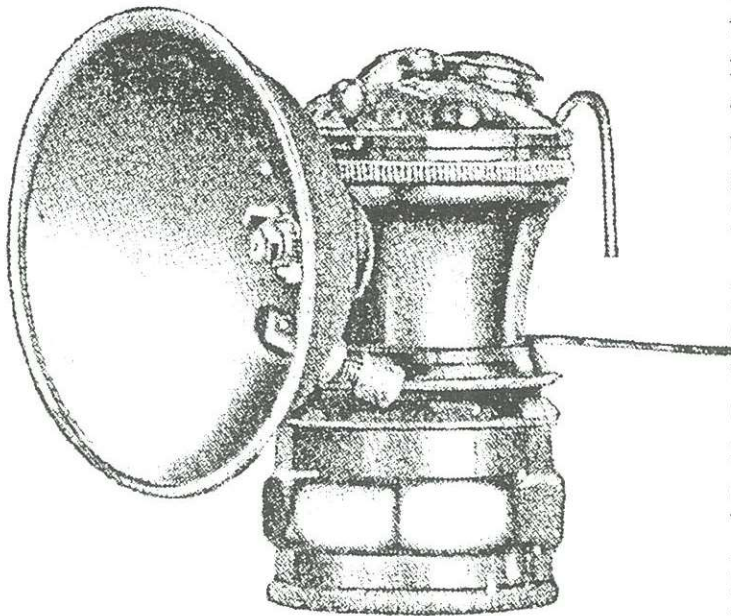


# How The Auto-Lite Is Made

by Dave Thorpe and Rob Youngs



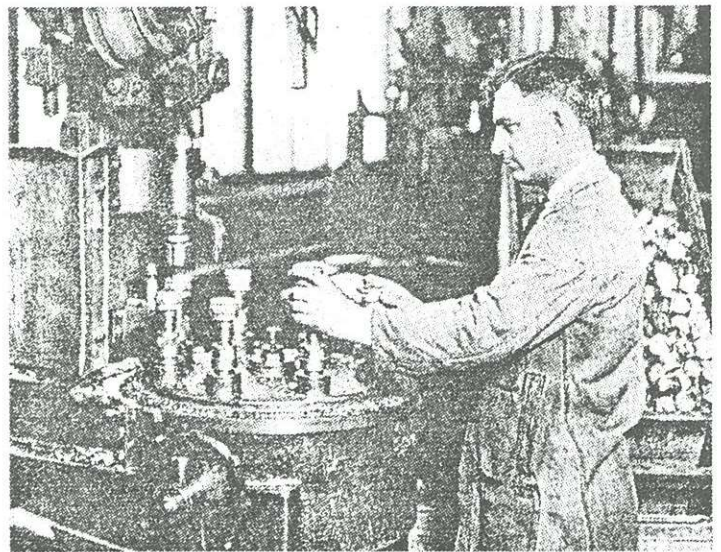
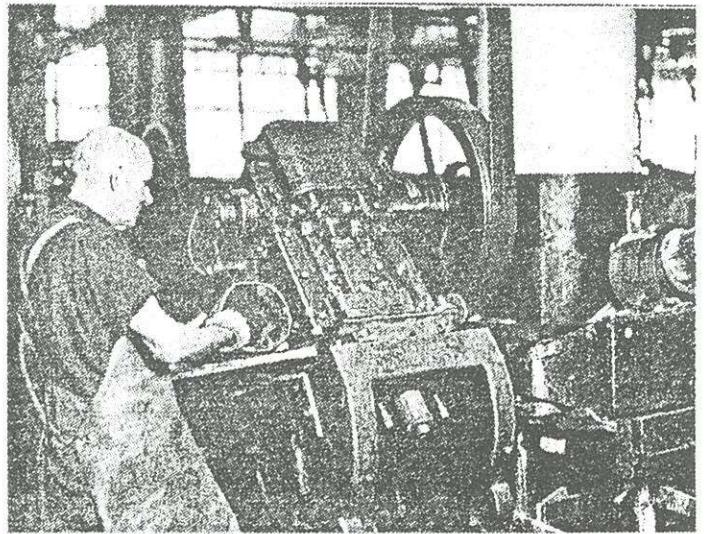
*A six story factory covering several acres.*



*Six "different" models are advertised, but their only difference is in reflector, and hook vs. spade attachments.*

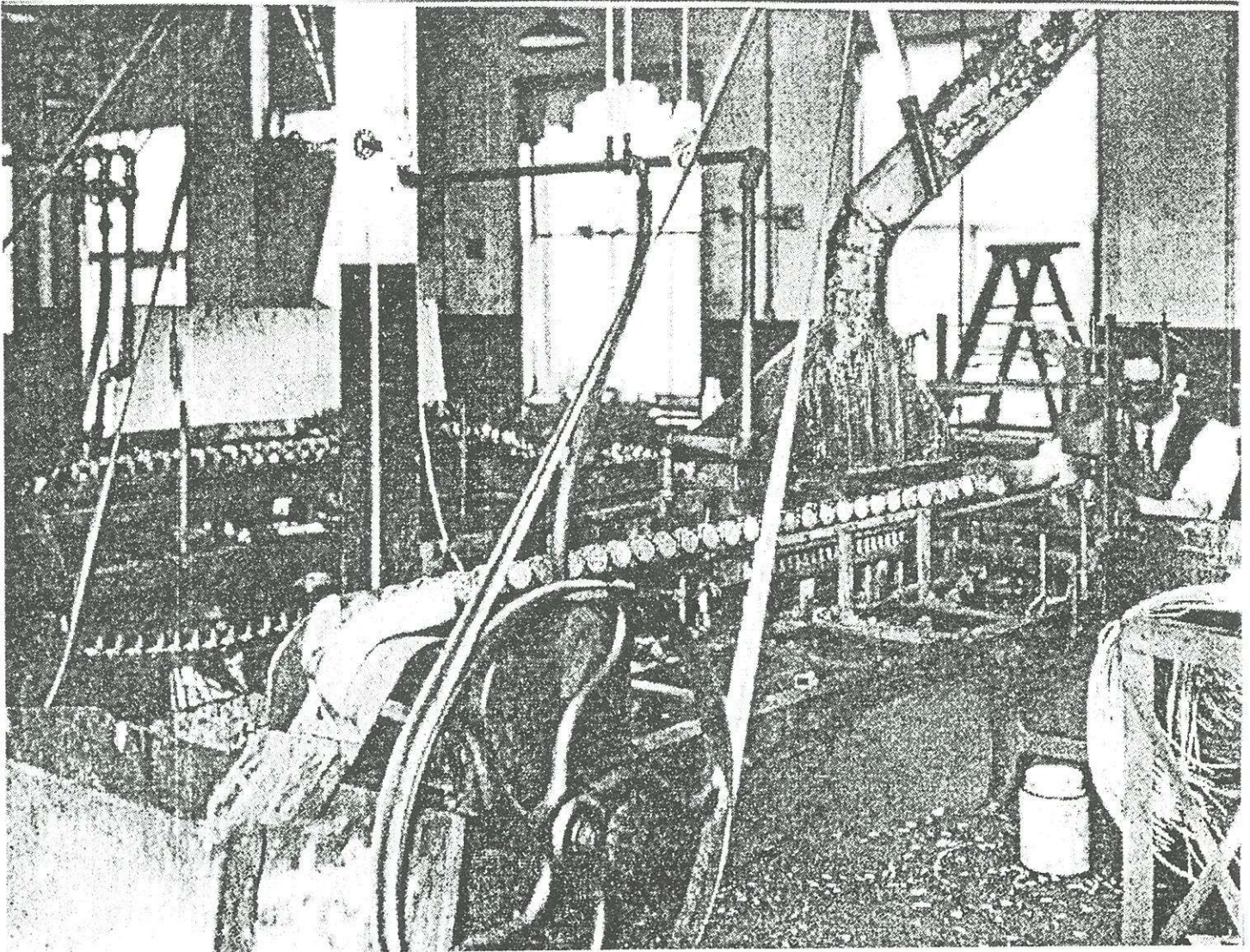
"How the Auto-Lite is Made" is the title of a 27-page promotional brochure that was recently found by Rob Youngs. It details the step by step the processes in manufacturing the Auto-Lite cap lamp. Shown here are a few of the photos and illustrations. The brochure illustrates six "different" lamp models that differ only in the reflector and hook/spade options. Also touted is the brass Auto-Lite flask that has no side seam.

It is stated that Chase Brass (Waterbury, Conn.) is used throughout. Additionally, the two locations listed for Universal Lamp Co. (Auto-Lite) are Chicago and *Waterbury!* The factory shown above is massive. It is not stated whether this plant is in Chicago or Waterbury, but it seems an unusually large facility for the manufacturing of basically one lamp and a carbide flask. Could this be the Chase Brass/Universal plant in Waterbury? More research may answer this.

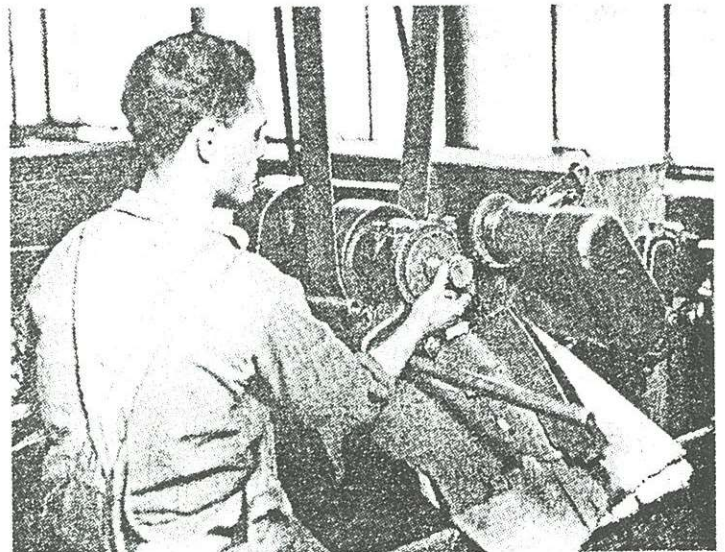


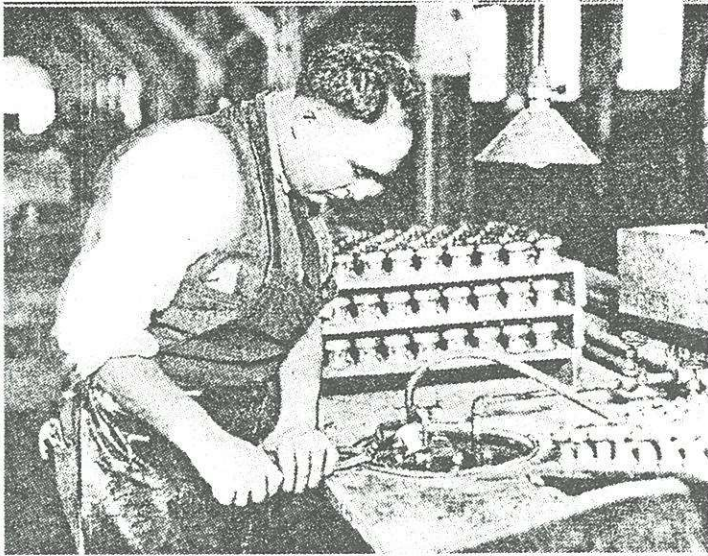
*The Auto-Lite flask is the only other item manufactured at the time this brochure was advertised. It is all brass and has no side seam, making it functional and highly attractive to collectors today.*

*Knurling (the term used in the brochure), and stamping procedures are shown right.*

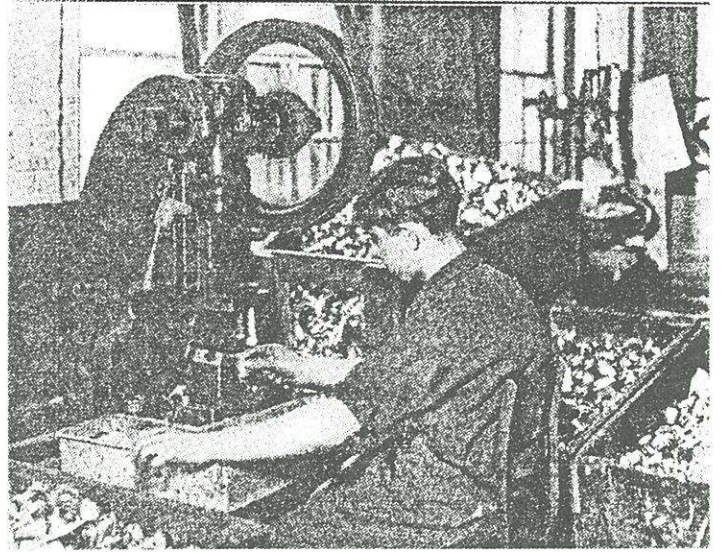


*Assembly line assured a steady production of lamps.*

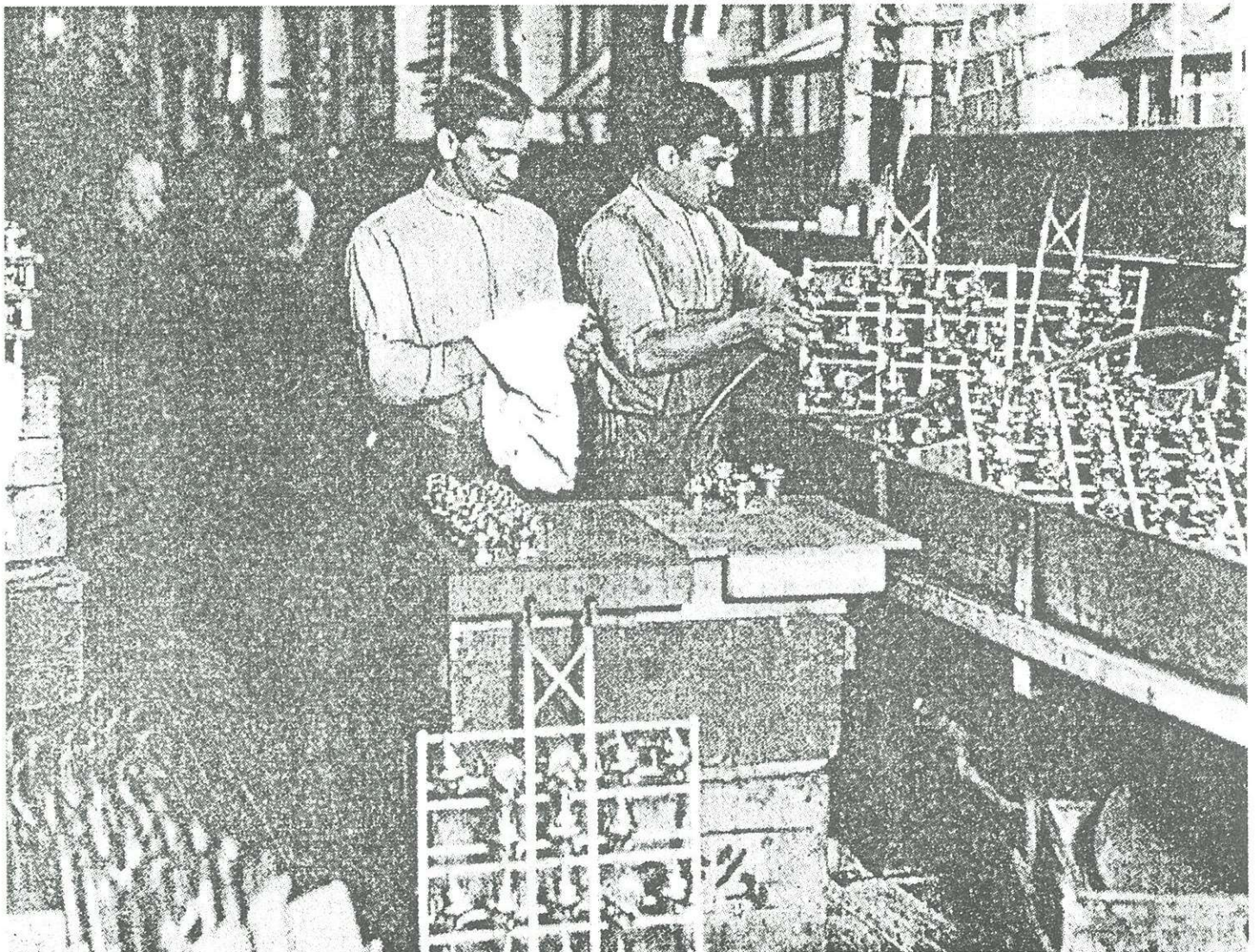




*Each lamp was pressure tested with compressed air in a water bath.*



*Holes are punched for the rivets.*



*Lamps are removed from the nickel-plating bath and hand polished.*