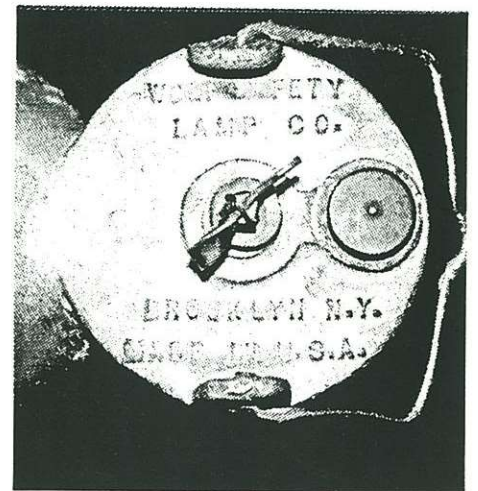
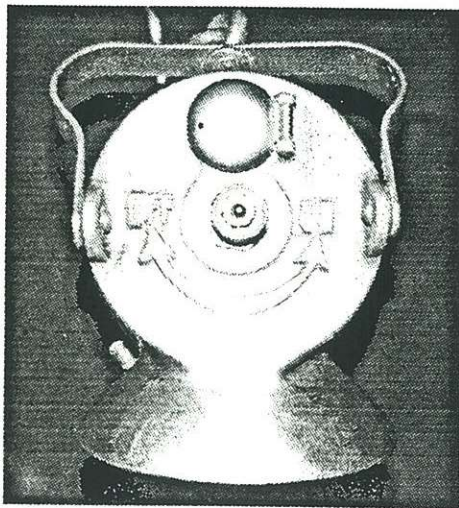
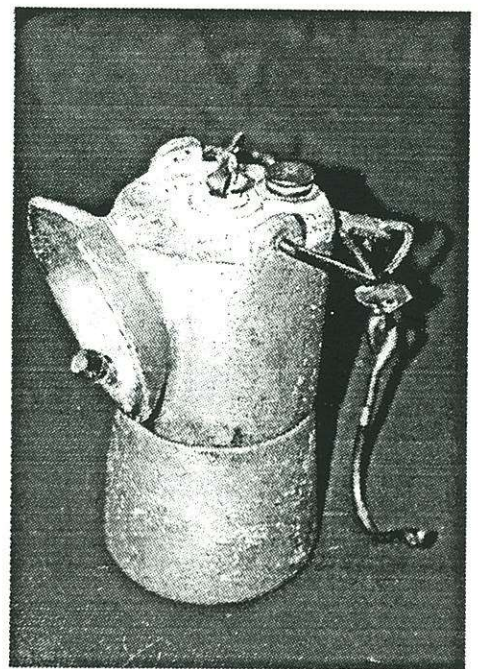
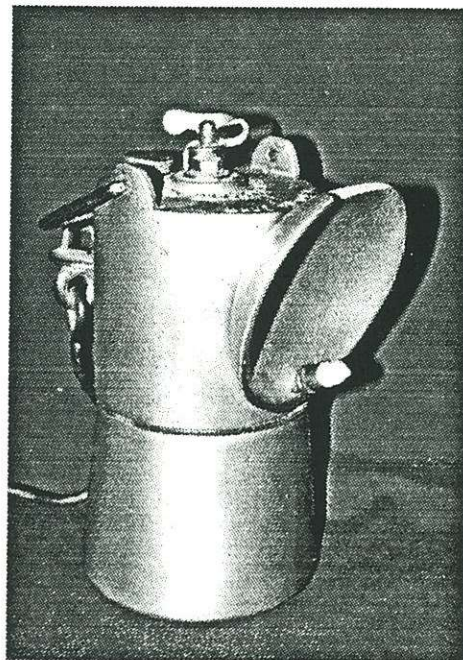
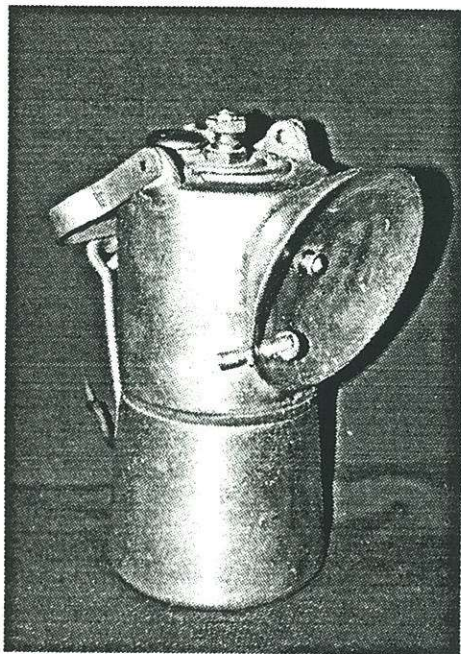


# Three Cast Aluminum Hand Lamps

*Dave Thorpe*

They are all similar in design, but differ in details. The unmarked lamp shown at far left would appear to be a copy of the two Wolf lamps on the right. Perhaps it is a Wolf. It differs by having a hinged water door, a central burner location, a flat steel brace, a notchless reflector, and a wheel water control. All of these lamps are rare in the U.S.A., and they would presumably be rarer in Europe, as they have American letters cast into them. The two Wolf lamps shown differ only in their top stamping.



*Errol Christman collection.  
Manufacturer unknown.*

*Errol Christman collection.  
Manufacturer Wolf.*

*Dave DesMarais collection.  
Manufacturer: Wolf.*