

Variations in Bulldog

by

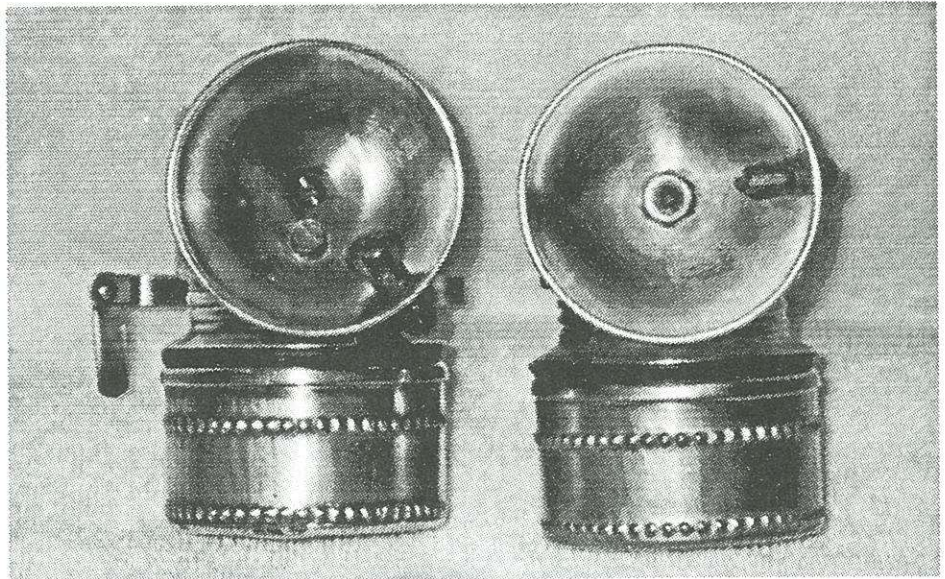
Bob Schroth

The Harker Britelite was made in a special model known as the Bulldog. This meant that the water lever was on top rather than on the side. Most of the Bulldogs were also made in brass, while the standard Britelite was usually black-paint over steel.

One of the features of the brass Bulldogs has been the extended tail below the rear hook. Until now, every brass Bulldog I have seen has come with the tail.

I recently picked up a very unusual Bulldog. It is brass, but it has the conventional hardware on the back: a cross-brace with a hinged arm. It differs also in that the burner is a low-mount, compared with the center mount usually seen on Bulldogs.

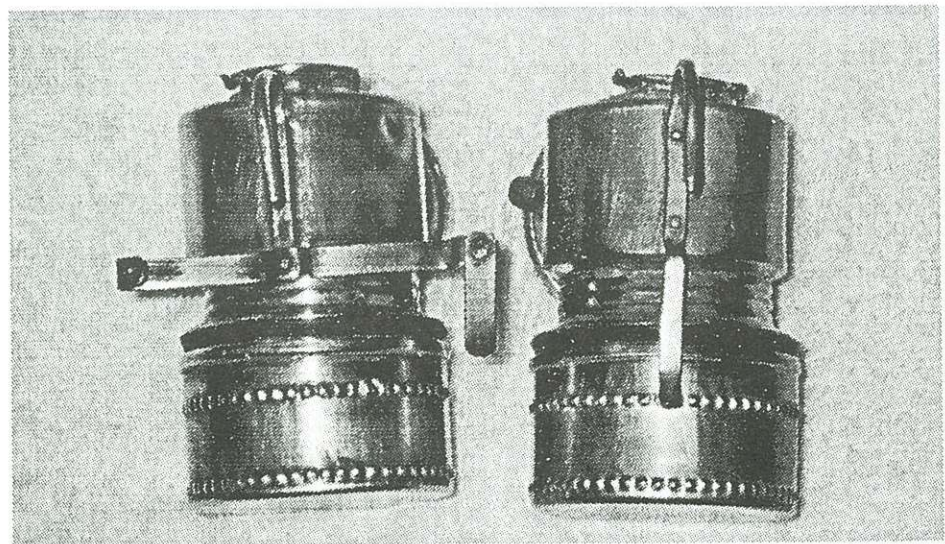
Just when you think you've seen it all, another exception comes along.



Low burner on left center burner on right.



Both lamps are 'Bulldogs': They use a top-mounted water lever.



Cross bracket with swinger-arm on left. Lamp on right with tail.