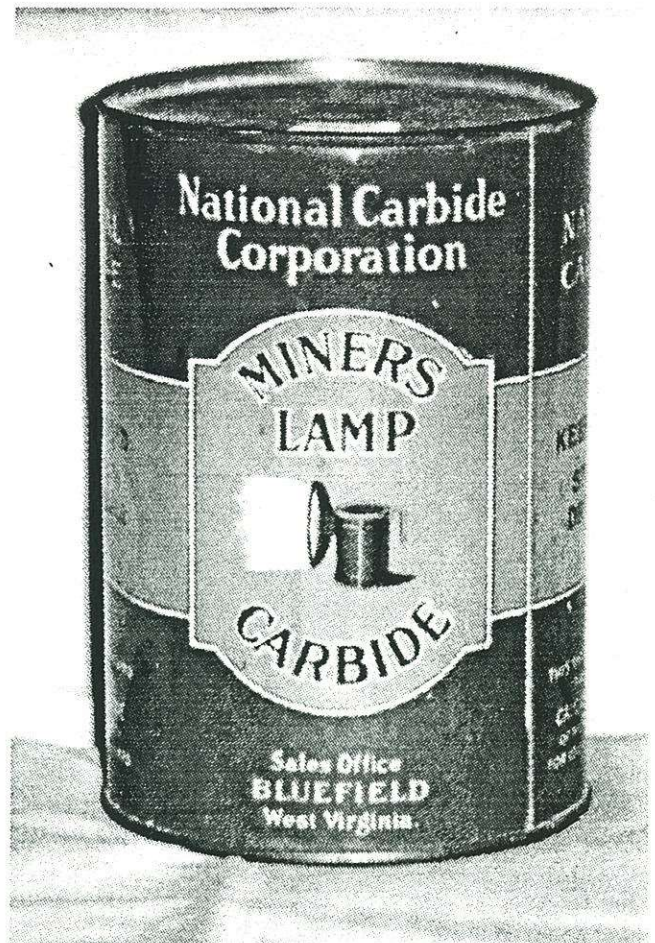


National Carbide Sales Corporation

Bob Schroth

Being an avid tin and advertising collector, finding an unknown style of a mining related tin is very exciting. This summer while trading typewriter tins for blasting cap tins, the collector I was dealing with asked if I would be interested in a 2lb. carbide can. He sent along a photocopy of a National Carbide tin with a previously unreported lamp on it. This was something I had to trade for. After negotiating the deal, I was happy to receive my new tin. I have yet to identify to cap lamp pictured on this tin. It looks like a cross between a S.E. Simmons, and a Standard. The Standard cap lamp was manufactured in West Virginia. Other odd things about this container are 1. It opens from the bottom. 2. It shows place of origin as Bluefield West Virginia. 3. It makes no mention of bicycle or other similar carbide lamps. I have three other styles of National tins. All of the other tins mention bicycle lamps. My 1928 issue of the Keystone Coal Mining Catalog, shows this early style tin container. It makes no mention of the company history, or a sales office in Bluefield, West Virginia. I can only guess as to the age of this tin. I would think that this is one of the earliest containers from this company.



Is the lamp pictured the yet to be rediscovered "Standard" cap lamp?



Carbide containers picturing the Standard(?), a Pocahontas(?), and Wolf cap lamps (left to right).