

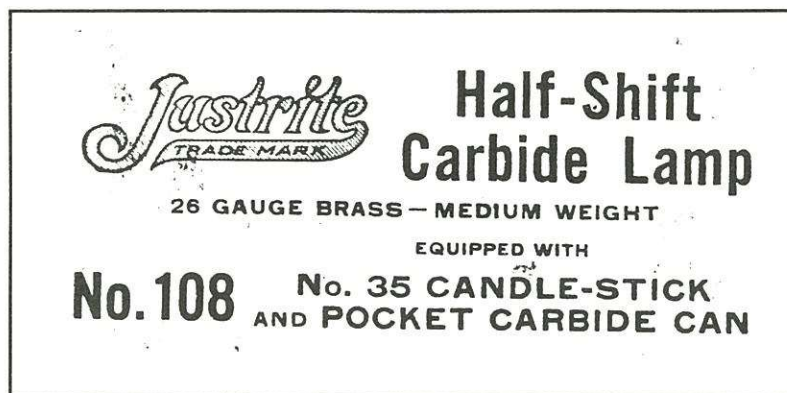
Metal Miners' Half-Shift Lamp

by Bob Schroth

By 1911, the carbide generated light had become the miners' choice in the eastern coal fields. This resulted in overnight success for manufacturers such as Justrite. Much to their frustration however, western metal miners faithfully clung to their trusty candles and spike candleholders which could be conveniently stuck into a support timber while they labored slowly in a

lamp made of heavier and more durable 22 gauge brass...another play for the metal miners who did not care about the extra weight.

Although I had owned a Justrite half-shift lamp for several years, it was only this summer when I first saw and acquired an original box for this lamp. Made of plain gray cardboard, the white paper label indicated it was a No. 108 package: 26 ga. brass with candle-stick and pocket carbide can.



On closer inspection, I found that the label was pasted over another label. When I carefully steamed off the top one, I saw a label for yet a new catalog number: No. 107. This package number is not advertised in any of the Justrite catalogs I have seen.

By the label's description, the No. 107 package contained the heavy weight 22 ga. lamp, the candle-stick attachment...and an extra *bottom* (not the pocket can!)

End label for No. 108 half-shift lamp.

hard rock vein. In an attempt to convert these stubborn men, and increase their market, most cap lamp manufacturers sold stick attachments for their cap lamps in the hope that a natural transition might occur.

As early as 1915, Justrite manufactured a lamp specially designed for use with a stick attachment. Its major differences from a standard cap lamp were the lack of cap braces, a sharp spiked hook for hanging on timbers, and a larger capacity carbide chamber. The larger and heavier base would be of no disadvantage since the lamp was not intended for wearing on the head. The lamp was known as the "Metal Miners' Half-Shift Lamp", since the candlestick designated it for use in metal mines and the larger bottom carried a four-hour, or half-shift charge of carbide



End label for No. 107 half-shift lamp.

The No. 101 lamp was advertised in several Justrite catalogs. It was available only with the 2 5/8" reflector. It was made from the standard 26 gauge brass. This lamp was also sold in a special No. 108 package which included a pocket carbide can (see label above). Additionally advertised was a No. 103

Did the No. 108 package replace the No. 107? If anyone has some advertising for the No. 107 package, I would appreciate hearing from them.

JUSTRITE CARBIDE LAMPS

METAL MINERS' LAMPS WITH LIGHTER ATTACHMENT

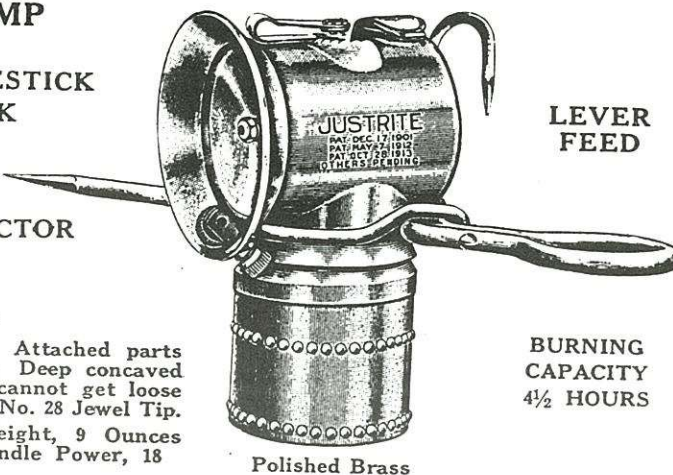
HALF-SHIFT LAMP WITH ADJUSTABLE CANDLESTICK AND STEEL HOOK

CONCAVED PERMANENT REFLECTOR 2 5/8-in. Diameter

Description

Drawn from seamless brass. Attached parts are riveted and soldered inside. Deep concaved Reflector is part of the lamp; cannot get loose or be broken off. Equipped with No. 28 Jewel Tip. Height of Lamp, 4 1/2 Inches Weight, 9 Ounces Diameter Bottom, 2 Inches Candle Power, 18

No.				
101.	Lamp Only	26 Gauge Brass	Price
108.	With Carbide Can	26 Gauge Brass	\$1.75
103.	Lamp Only (Heavier)	22 Gauge Brass	1.90
				2.00



LEVER
FEED

BURNING
CAPACITY
4 1/2 HOURS

Polished Brass

Candlestick Attachment

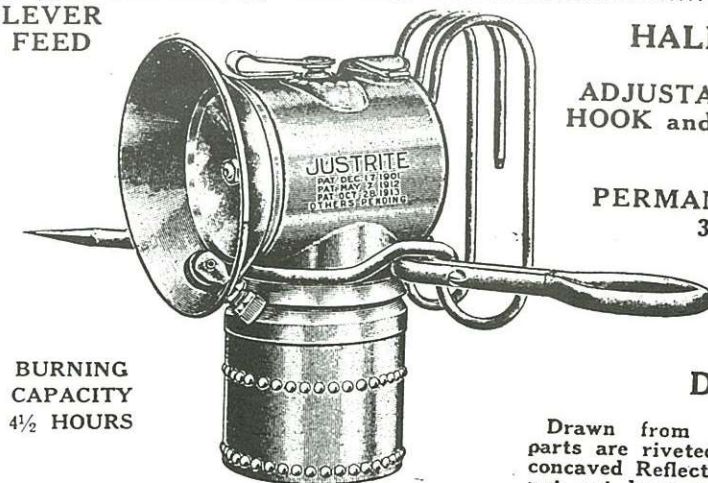


No.				Price
35.	1/4-in. Hard Steel, 9 3/4 inches long, each		\$0.25

LEVER
FEED

HALF-SHIFT LAMP WITH ADJUSTABLE CANDLESTICK, HOOK and FOLDING HANDLES

CONCAVED PERMANENT REFLECTOR 3-in. Diameter



BURNING
CAPACITY
4 1/2 HOURS

Description

Drawn from seamless brass. Attached parts are riveted and soldered inside. Deep concaved Reflector is part of the lamp; cannot get loose or be broken off. Equipped with No. 28 Jewel Tip.

Height of Lamp, 4 1/2 In. Weight, 12 Ounces
Diameter Bottom, 2 In. Candle Power, 18

No.			Price
202.	Lamp Only	26 Gauge Brass\$2.00
204.	Lamp Only	22 Gauge Brass 2.25

Polished Brass

Repair Parts

- No. 35. Candlestick (See Above)
- No. 69. Extra Bottom for 101-102 Lamps
- No. 29. Extra Bottom for 103 and 204 Lamps.
- No. 60. Rubber Gasket
- No. 62. Felt Packing

- No. 64. Felt Holder
- No. 79. Valve Stem
- No. 17. Wire for Valve Stem
- No. 172. Extra Flints for Lighter

Prices on Pages 16-17.