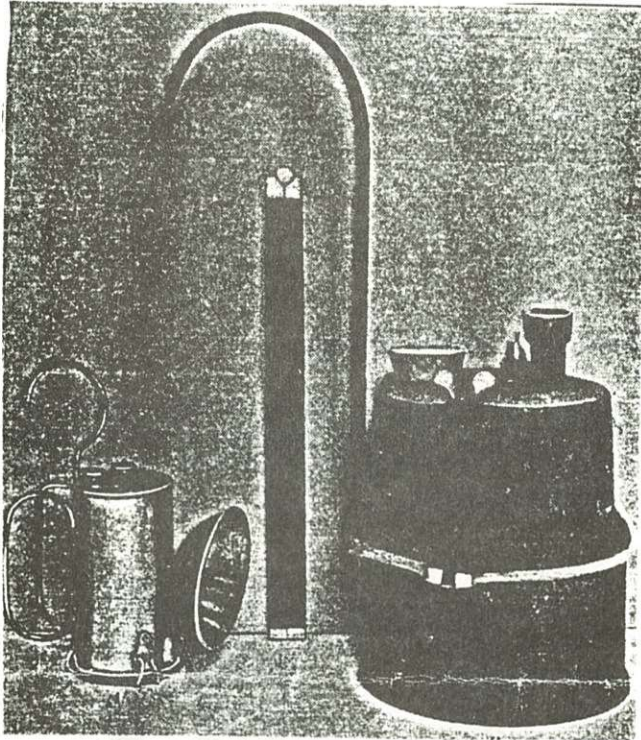


## "Full Moon" Miner's Lamp with Handles

John Shannon found the following picture with accompanying article in **Mines and Minerals, April 1902**. The smaller lamp appears to be the "Full Moon" carbide lamp patented by Frederick Baldwin in 1900 and initially manufactured by A. H. Funke. A clamp on the back allowed the attachment of handles. In the article it is stated that the Ingersoll-Sergeant Drill Co. was "sole selling agency for the lamp". The lamp is described, not as the "Full Moon", but as "Superintendent's Lamp" It would be interesting to see how this lamp, complete with handles, may have been stamped.

John Shannon  
7319 W. Cedar Circle  
Lakewood, CO 80226



## Desperately Seeking Trethaway

In a future issue we would like to do an article on the Trethaway Bros. oil-wick lamp. We are looking for an advertisement or letterhead from Trethaway Bros. to use in the article or on the cover. Please contact me if you can provide this item.

Dave Johnson, Oil-wick lamp editor

## Unidentified Cap Lamp Base Reported

Mike Puhl of Jackson, Tennessee has found this unfired, unmarked base for a cap lamp. It has a very light gold gilt paint. The threads seem to fit Justrite products best. Mike has compared this to many other bases and can find no similarity of construction that would lend a clue to the manufacturer.

Mike Puhl  
29 Stonehill Cove  
Jackson, TN 38305



## Information Sought on Nickel Ingot

A few years ago, I acquired an ingot of nickel poured by the Great Western Smelting & Refining Company. I have attached a pencil rubbing (see below) showing the markings on the top of the metal: the cities of Seattle, San Francisco, and Los Angeles are shown below the logo/monogram. The piece weighs approximately two pounds, and its dimensions are: 9" X 1.75" X .75". Although I have researched this in the local library, I have been unable to trace the origins and history of the 'GWS & RC' or the nickel mines that supplied the concentrate for smelting. Perhaps readers of the MAC could help me with any useful information they may have concerning this company.

Ian P. F. Dorling  
3300 S. Sutton Avenue  
Boise, Idaho 83706

