

AN UNUSUAL WOLF CARBIDE HAND LAMP

by Tony Moon
Sandy, Utah

One of the most unusual Wolf carbide lamps that the author has examined is a cast aluminum eight hour lamp which evidently was made in very limited numbers. The only advertisement that the author has been able to find is shown in Figure 3. It is from 1920, after Wolf started to manufacture lamps in the United States. The 1921 Wolf advertisement in the Keystone catalog does not show the lamp. The author has only seen three examples of this lamp and all are slightly different.

The example in Figures 1 and 2 is in the author's collection and is probably the earliest of the three. The only markings are "ON" and "OFF" on the water feed which only turns in a 60° arc. The lamp has no water door but the center of the water control knob acts as a funnel for water addition. The lamp is 6 ¾ inches high at the water control knob and is 3 ¾ inches in diameter at the base.

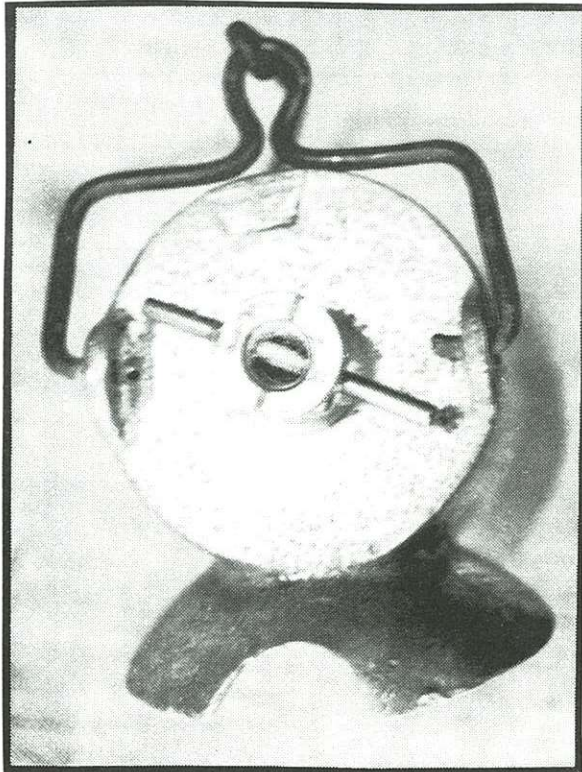


Figure 1. Top view of the early Wolf cast aluminum 8-hour hand lamp. (Author's collection)

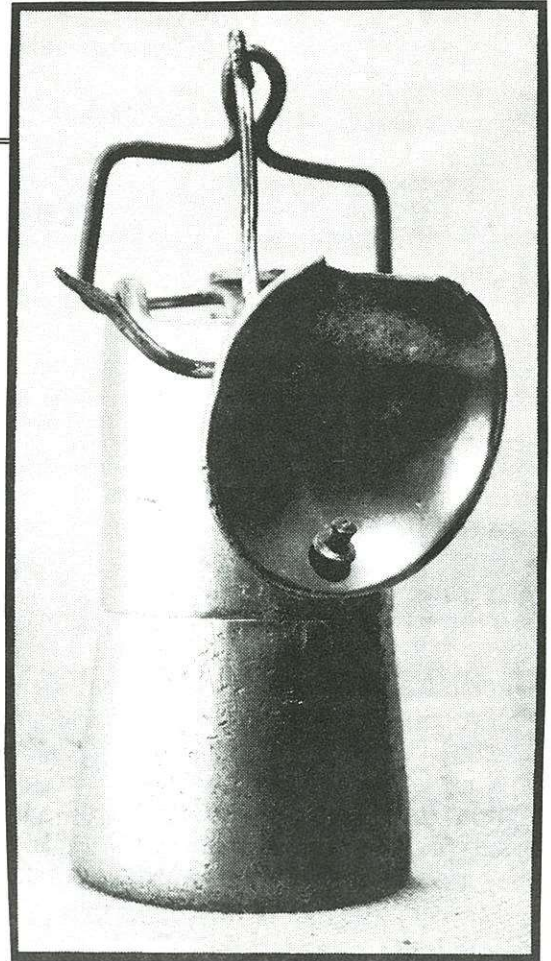
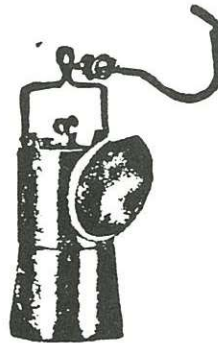


Figure 2. Side view of the early Wolf cast aluminum 8-hour hand lamp. (Author's collection)

WOLF ACETYLENE LAMPS



are unusually sturdy. They are easy to clean and effect real savings in operating expense. They are used in every Mining Country of the world.

Write us for Wolf literature. It will give you real information on an interesting subject.

Wolf Safety Lamp Co. of America, Inc.

227 Grand Avenue, Brooklyn, New York

E. D. Ballard, 268 Market St., San Francisco
Distributor

Figure 3. An advertisement from a January 24, 1920 issue of *Mining and Scientific Press* for the Wolf cast aluminum hand lamp.

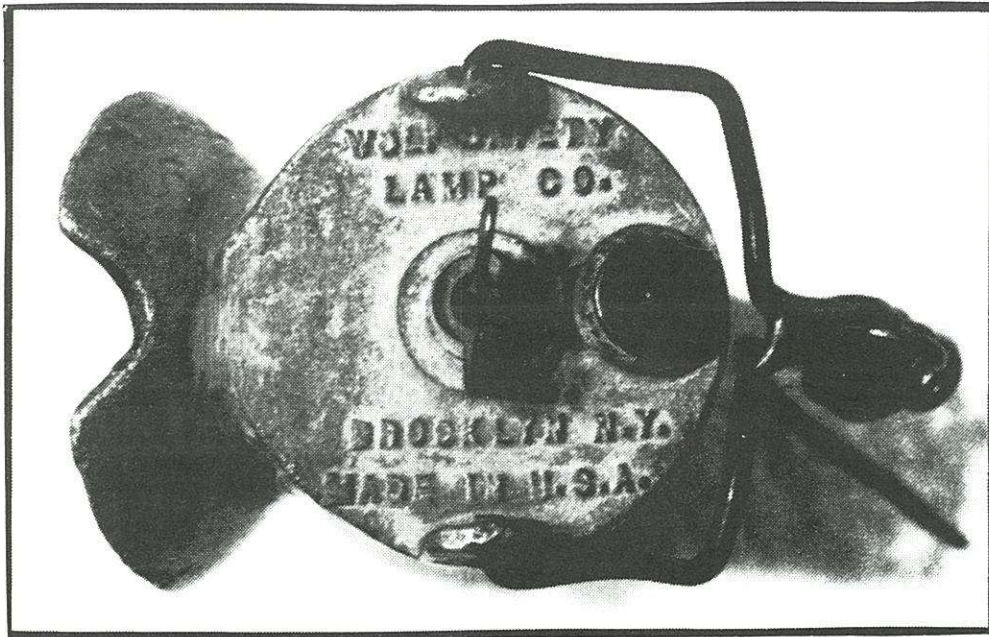


Figure 4. Top view of another Wolf cast aluminum 8-hour hand lamp showing the stamping. Note the location and style of the lettering (and therefore the mold) has changed. (Kelly Deem collection)

WOLF'S OPEN CARBIDE LAMPS

The example in Figure 4 has the standard Wolf screw-on water door and water control lever. The Wolf name and address are now cast into the top of the lamp.

The last example is shown in Figure 5 and 6 and is similar to the previous example except that the location of the lettering (and therefore the mold) has changed.

I believe that this lamp was designed and manufactured in the United States (in contrast to many Wolf lamps which were basically of German design) for the U.S. market possibly to compete with its Justrite contemporary, the Little Giant. It was probably only made for one or two years and was almost certainly unpopular as the threads undoubtedly seized as with many aluminum lamps.

Figure 5. Side view of the same aluminum lamp shown in Figure 6. (Errol Christman collection)

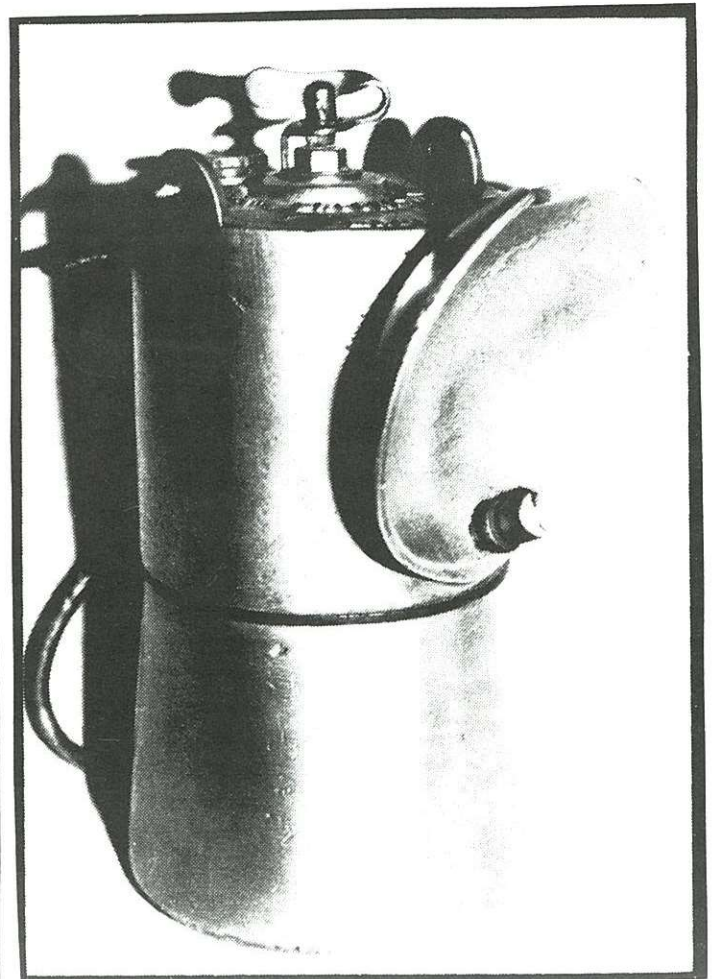


Figure 6. Top view of another Wolf cast aluminum 8-hour hand lamp showing the changes in the stamping. (Errol Christman collection)

