

THE HARDSOCG LAMP SCORE

by Greg Millar

It all started on my seasonal trip to Los Angeles. On most trips, time permitting, I'd stop and check with the local mall antique shops. One in particular has been a good "score" from time to time... so the mining artifact hunt was on. Walking into the store, I scanned aimlessly around to pick up on my subject. From space to space... nothing. I thought to myself - "another picked out place, time to shoot my mouth off." I confronted the attendant,

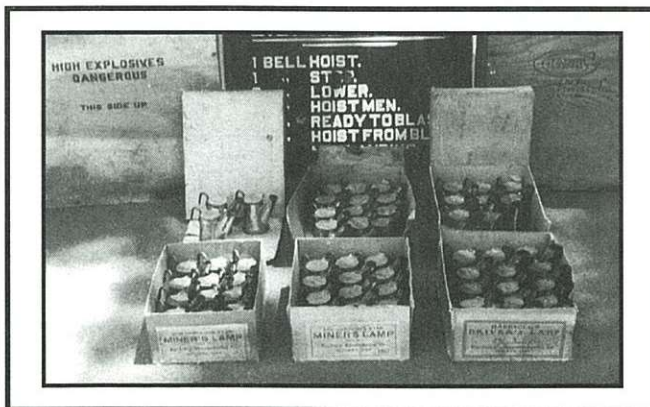
"Hey butthead! Any leads on mining stuff?"

He looked awkwardly at me, "What did you say? Oh, it's you - I think I've got something. One of my pickers stopped by the other day with some boxes full of tea pot looking stuff. But they had labels on them saying 'Miner's Lamps'."

"This is cool, but when can I see them?"

"My picker will be back next week and I'll see if I can pick them up for you."

I then asked him how many boxes and when he said four or five with a dozen lamps in each I knew this was a major find. Then he said they were just like new, I told him I would be interested in **all** of them.



A week later I called the shop in L.A. and when I enquired about the lamps I was told that only one box was picked up. Apparently they figured that I would want to double check the one box before committing

to them all. A week later the package came and I opened it to find a complete box of 12 Hardsocg #5 Driver's Lamps, unfired with their lids stamped, Jan 30, 1927. Well, Well... if this is one of four or five boxes then this could be a great deal. I immediately got "on the horn" to L.A. and had them send me the rest of the lamps.

Four weeks later, after numerous phone calls, there were no packages in the mail and no responses to my messages. "Another great deal gone bad?"



#40 Miner's Lamp

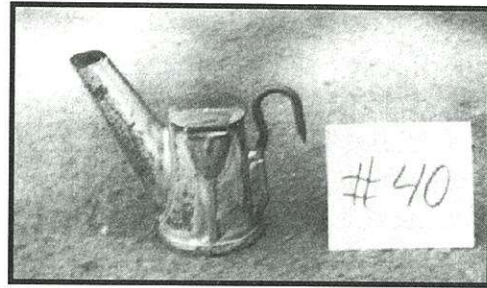


#5 Diner's Lamp

Unlike most transactions like this one, this story has a good ending. I received a call the following week confirming their shipment. Finally, all the boxes arrived and they all had lamps, lots of lamps, the accounting is as follows:

Style	Label	Quantity
#5	Driver's Lamp	20 (12 each w/box)
#150	Miner's Lamp	27 (12 ea w/box)
#40	Miner's Lamp	12 (1 box only)

A total of 59 lamps



#40 Miner's Lamp

January 30, 1927 must have been a good day that year for the production of this issue. All lids have a rubber stamp on top. Rumor has it that they originated from a U.C. Berkeley Geological Department clean up years ago. This is a rare find, but how rare? Where do we draw the line on value and collectability. Most collectors see value and quality in those individual lamps that have been used and their appearance and functionality maintained. But what about those that are unfired and in their original boxes? ✕



Gypsyfoot Enterprises, Inc.

Specialists in Paper Americana

We issue 3 to 4 mail bid catalogues per year which always include many mining stocks, maps, checks, letterheads, photos, scrip and occasional hard goods, as well as hundreds of other items of Western Americana and misc. paper ephemera.

👉 Send \$4 for next extensive illustrated catalogue. 👈

Gypsyfoot Enterprises, Inc.
 P.O. Box 5833, Helena, MT 59604
 406/449-8070
 email: Gypsyfoot@aol.com