

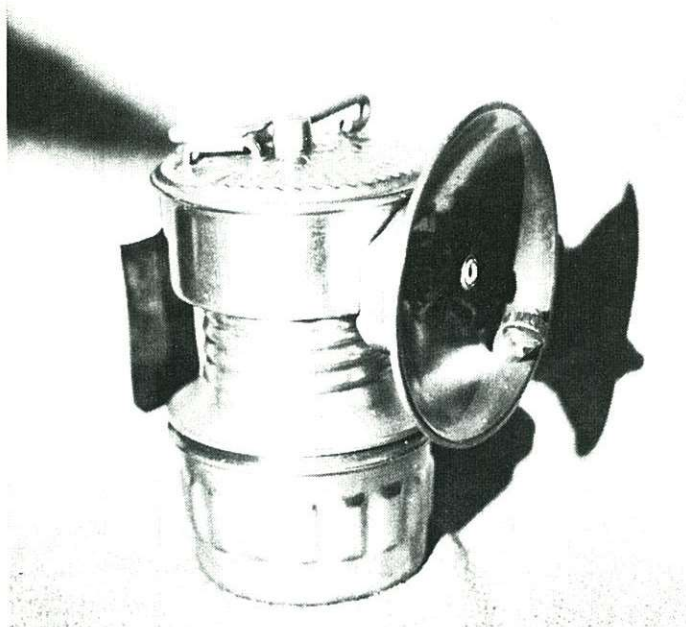
# Demon Strike Light

Stephen James McCabe

It has long been thought that the DSL lamp was manufactured in the United States to be exclusively exported to Australia, possibly by the Shanklin Manufacturing Company of Springfield, Illinois. This is yet to be *proved*.

When examined closely the DSL is very similar to a six patent date Guy's Dropper. During the course of researching this article I examined twenty blade style DSL lamps and one hook style lamp. I myself have been fortunate enough to have obtained four different blade style variations. I believe the DSL was very well marketed and distributed in Australia, both in the East and West states.

Included in this article are drawings of design variations. These have been cataloged according to Paul L. Kouts Carbide Lamp Reference, 1982.



*A Demon Strike Light carbide cap lamp.*

The water door on the DSL is different from a Guy's Dropper in that it has a crimped flange, more like the earlier style Premier lamp manufactured in England. The water door diameter varies according to styles. This is probably due to wear and tear on the manufacturing dies.

Reflectors have only been found in unplated brass, with diameters of 2 1/2 and 3 inches. The bases are generally the same from variation to variation. The only difference found so far was in the earliest model. This base had a reinforced bottom.

## Variant One: Top Mark 1, TA1, SSF, BA:

This lamp I believe to be the earliest variation and the same as all hook styles due to the presence of a soldering recess behind where the blade is mounted, just like the hook style Guy's Droppers. TA1 has cut outs for a Guy's Dropper style clip on hat brace. The base of the water tank is sharp and unbeaded. The top of the water tank has twenty-two click stops. The lamp was found with a 3 inch reflector.

## Variant Two: Top Mark 1, TA2, SSF, BB:

This lamp also has twenty-two click stops, and was found with a 2 1/2 inch reflector. It is more or less like variant one, except that the base is not reinforced.

## Variant Two (B): Top Mark 2, TA2, SSF, BB:

This lamp is essentially the same as variant two except that it has a very unusual, almost "Asian" style insignia stamped on the top, which leaves me wondering "was the DSL made in the Orient?" The insignia itself is very professional although it is partly blurred. In my opinion it was stamped at the factory in the die and not by the miner, as there are no surrounding stress marks or dents. Only one example has been noted. Water tank base beaded.

## Variant Three: Top Mark 3, TA2, SSF, BB:

This is the latest and last style known. It has twenty-nine click stops, the top of the water tank has a squarer profile than previous lamps, it too was found with a 2 1/2 inch reflector. The base of the water tank, like variant two (B), is beaded.

As yet the only DSL accessory I have found is a spare base (BB) with lid. The lid only extends the length of the thread and is unbeaded and rough. This would have made it very difficult for the miner to carry a reserve gasket.

The origin of the DSL still remains a great mystery both in Australia and overseas. Recently I found a copy of a mining candle report, Tests of Mine Candles, Victoria, 1910, which stated the existence of a "Demon Brand" mine candle. Are they related? Perhaps in the near future we may find a mint condition Demon Strike Light in its original box and be able to solve the puzzle!

*Editors Note: This article appeared originally in the Newsletter of Australian Mining Collectibles, Volume 1, number 2, Winter 1992 issue. Stephen and Megan McCabe and Graham McCrohon are publishing the quarterly newsletter for their fellow collectors "down under." Interested collectors this side of the world might consider writing to Stephen at 22 Gowlland Pde., Panania 2213, Sydney, N.S.W., Australia. "Donations of paper, postage stamps, envelopes, and even articles would be greatly appreciated."*

**Carbide Lamp Reference System Used in This Article:**

- T = lamp top (water reservoir)
- A1 = first style (solder recess for hook, and hat brace cut outs)
- A2 = second style
- SSF = soldered wide spade mount, with flat surfaces
- B = base (carbide receptacle)
- A = first style (reinforced base)
- B = second style (standard base)
- Top Mark 1 = twenty-two click stops
- Top Mark 2 = twenty-two click stops, with insignia
- Top Mark 3 = twenty-nine click stops

