

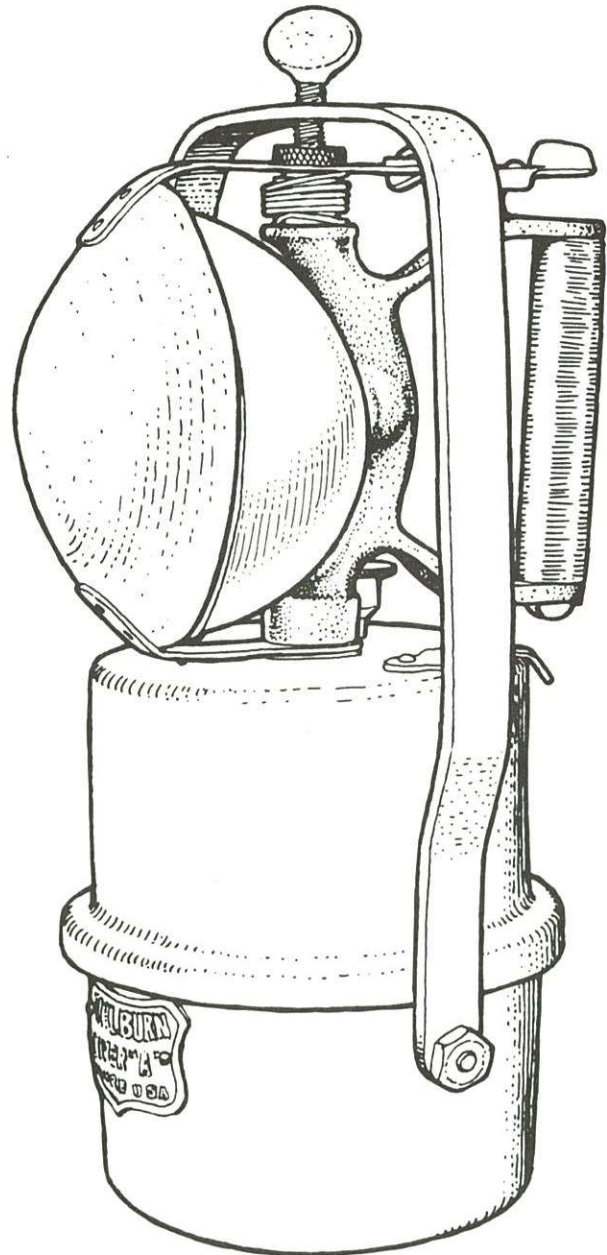
The Milburn Miner "A" Hand Lamp

by

Wendell Wilson

The 8-hour MILBURN MINER "A" lamp I have sketched is peculiar for the reflector cover (brass) which swings out of the way when the thumb-tab above the handle is pushed. When the thumb-tab is released, the spring returns the reflector cover to the closed position. It is simple to operate with one hand. There is no spark-igniter mechanism attached to the reflector; if there were, the reflector cover might have served beautifully as a baffle for allowing acetylene to accumulate before lighting (like the usual method of cupping the hand over a reflector). But without an igniter it's pointless in that context, so that cannot be its purpose. I suppose it could have been used for signaling. Any explanation of its intended function will have to account for the fact that the "rest" position of the reflector cover is "closed."

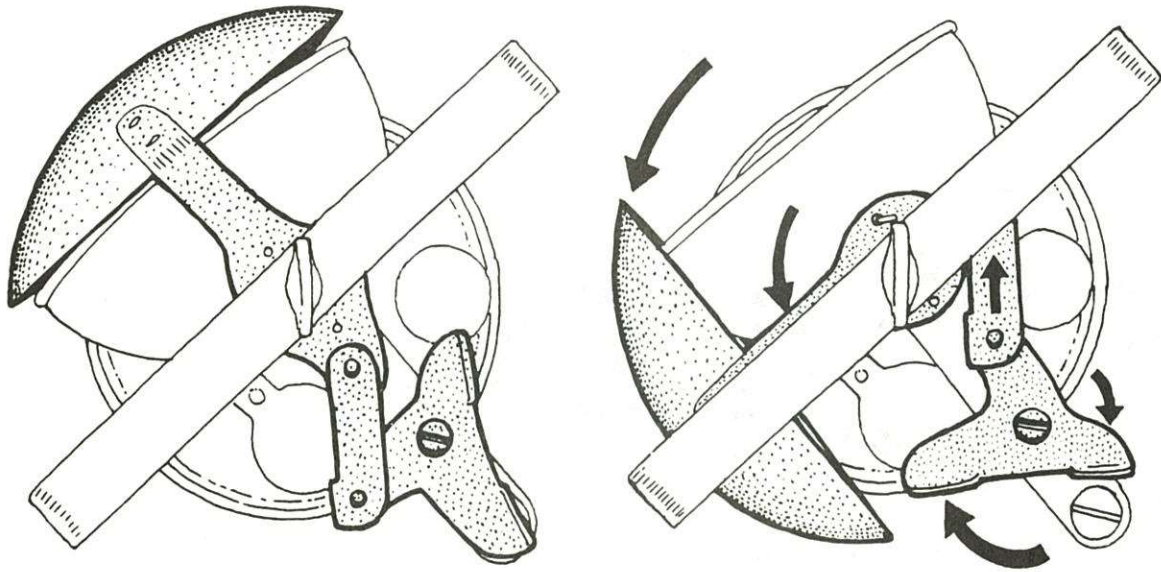
This same basic lamp has been found in a more conventional style *without* the swinging reflector, as shown in the photograph from Tony Moon's collection.



Height: 8.75 inches

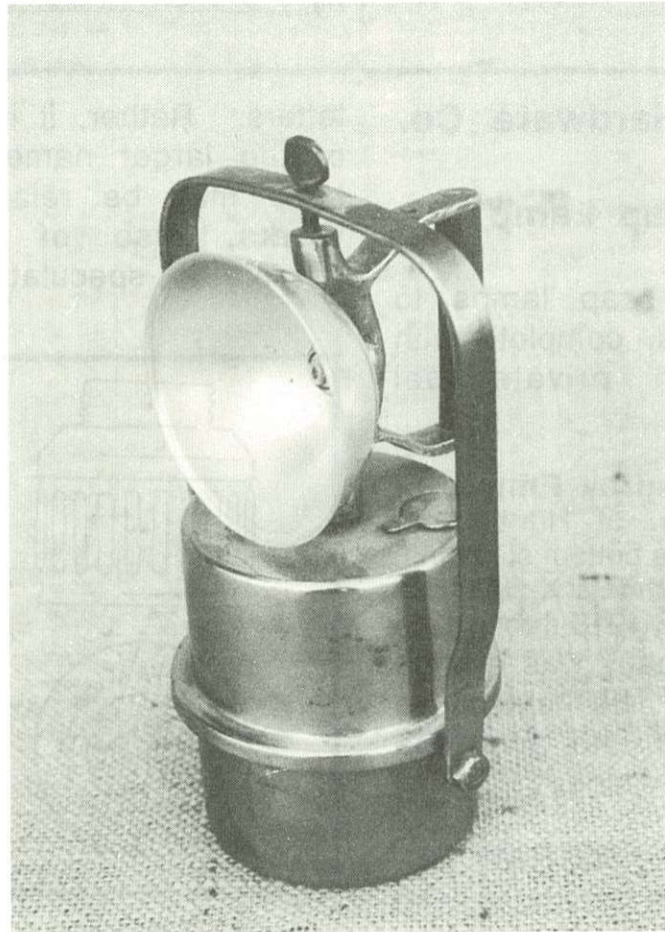
Construction: All brass except for steel bail, and thumb-screw, aluminum reflector, steel spring, dark red rubber handle-piece. Reflector/handle mount is cast brass.

Owner: Bernard J. Haynes
7825 Eustis Ct, Cincinnati, OH 45236



W.E. Wilson 1990

Reflector-shade swing mechanism as seen from above



Essentially the same lamp, but without the swinging shade. (Tony Moon collection)