

The Early Victor by Justrite

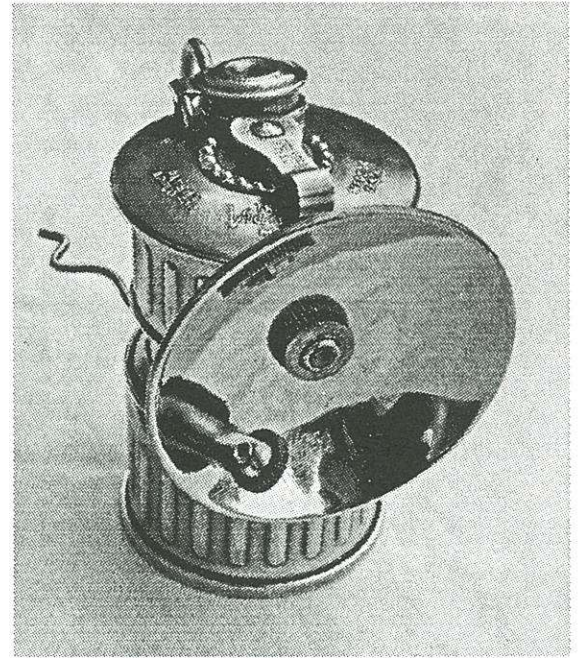
by Jim Lackey

Much has been told of the reflectors found on Justrite's Victor, as most can be identified by a circular stamping around the mounting hole for the striker. This fact has been used as an identifying characteristic for this reflector, yet some very early Victors seem to be found without this stamping.

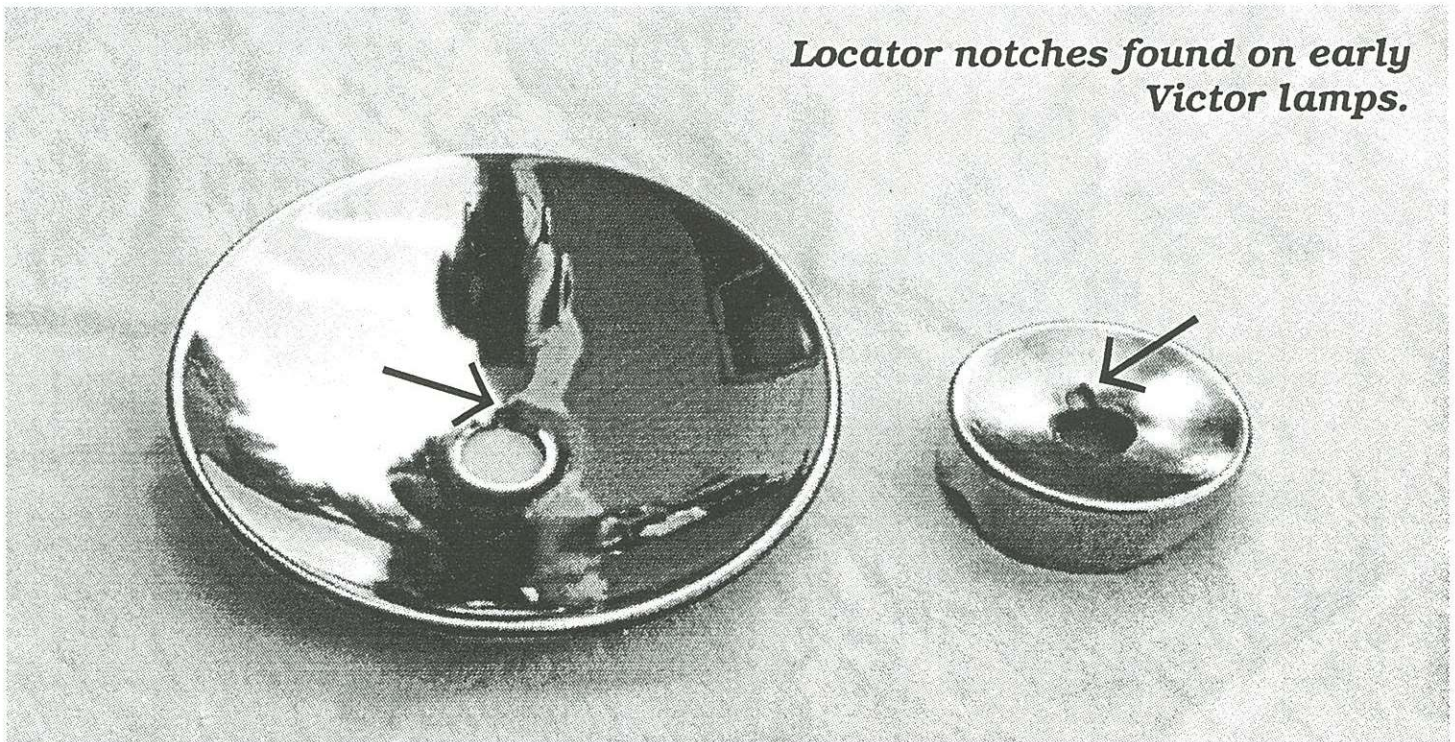
Closer inspection will show that earlier Victors had a unique reflector brace and reflector, that could be identified even without the special stamping. Under the knurled, round retainer nut, you will find a slight indentation in both the brace and reflector. This allows the reflector and brace to be locked together but only allows the striker to be in the eight o'clock position.

Early versions come with a common Justrite felt holder. Sometime later, they had their own unique felt retainer with two parallel wires. This resembled the retainer from its hand lamp counterpart: the Acme.

If you like variety, the Justrite Victor could keep you busy for many years to come.



Justrite's early Victor cap lamp.



Locator notches found on early Victor lamps.