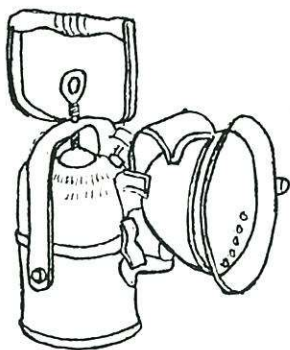


Most collectors are familiar with the carbide lamps produced by the Wolf Safety Lamp Co. of America. Less well known is the Wolf Safety Lamp Co. Ltd. of England.

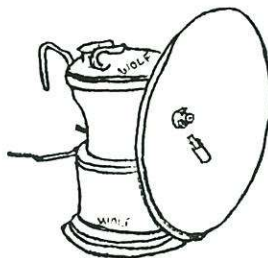
# Wolf: in English Clothing

by Dave Johnson

## WOLF ACETYLENE LAMPS



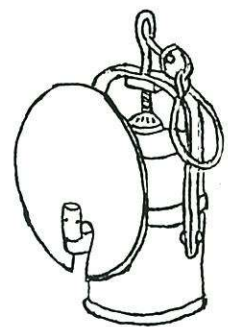
No. 60A MPH



No. 911C



No. 854



No. 60A

Made in Sheffield, England, these four lamps represent the Wolf line-up in an undated brochure.

The Wolf Safety Lamp Co. Ltd. produced at least four carbide hand lamps - No. 60A, No. 60AB, No. 60A MPH, No. 854 and a carbide cap lamp No. 911c.

The No. 60A is made of tinned steel, with a 5 1/2" brass reflector, brass water regulating valve, and steel bail with banging hook. The lamp is 8 3/4"

tall, weighs 2 lbs. 14 oz., giving a light of 25 candlepower and was advertised to burn for 10-12 hours on a 9 oz. charge of carbide.

The 60A MPH is the same lamp as the 60A but with a "milk-pail" handle and brass bonnetted reflector. The 60AB is a 60A with the same bonnetted reflector as the 60A MPH

weighing a total of 3 lbs. 3 oz.

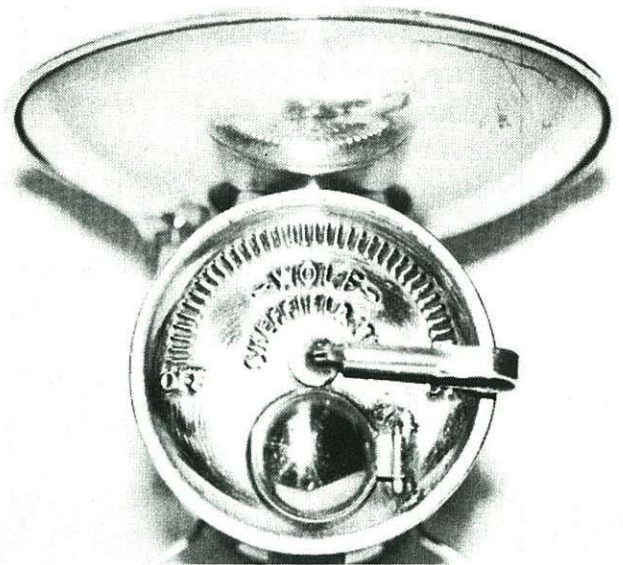
The 854 lamp is made of tinned steel, with a patented overall bridle, a 3 1/2" brass reflector, ring hook and wire handle. The lamp is 9 3/4" tall, weighs 3 lbs. 4 oz., giving a light of 20 candlepower and was advertised to burn for 10-12 hours on a 9 oz. charge of carbide.



The most interesting lamp produced by the Wolf Safety Lamp Co. Ltd. is the No. 911c carbide cap lamp. Made entirely of brass, except for the 4 1/8" aluminum reflector, the lamp is 4 1/2" tall. Weighing 7 1/4 oz., the lamp was advertised to burn for 4 - 4 1/2 hours on a 1 1/2 oz. charge of carbide. As can be seen in the accompanying photos, this lamp bears only a vague resemblance to the American made Wolf carbide cap lamp, yet it has the same catalog number. Have any other collectors found an example of this lamp?

*(RIGHT AND ABOVE) Wolf cap lamp showing Sheffield stamping on top.*

*(Below) Logo from Wolf brochure. Many English Wolf safety lamps appear with the name William Maurice.*



**THE WOLF SAFETY LAMP CO. (WM. MAURICE) LTD.**

**SAXON ROAD WORKS, SHEFFIELD 8**

**ENGLAND**