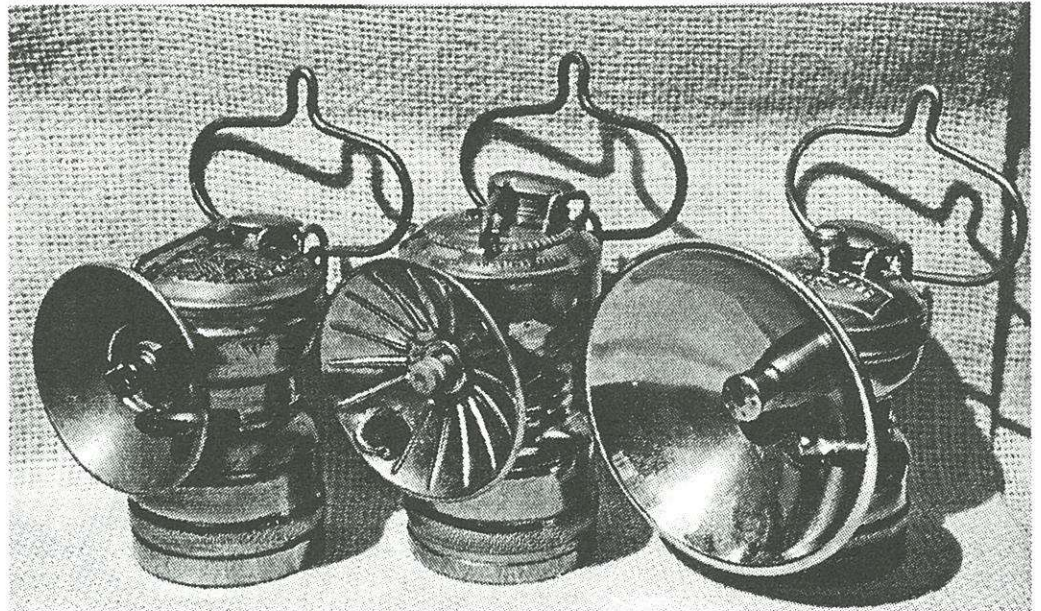


Folding Handle Cap Lamps

by Dave Johnson



A factory feature that I am aware of appearing on three different carbide cap lamps is an unusual 3-position folding handle. Seen here on SunRay, Pioneer and ITP Float Feed cap lamps.

The bracket on the back of the lamp has notches that lock the handle into any one of the 3 positions. The position of the handle is changed by squeezing the handle, moving to the desired position and releasing the handle.

In the upright, or vertical, position the lamp could be carried with the handle serving as a bail. In this position the notch in the handle

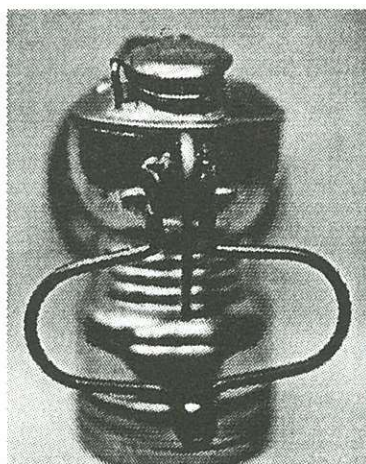
would allow the lamp to be hung from a nail, as well as being carried in the hand.

The horizontal position allows the lamp to be pointed up or down comfortably, unlike can be accomplished with a bail type handle. When folded down the lamp can be attached to a hard hat or soft cap just like any other cap lamp.

I have been unable to obtain any patent information on this lamp feature. Given its uniqueness a patent would have been obtainable. Judging by the few pieces seen today, I doubt many were produced or it found little acceptance.



ITP Float Feed -UP



Pioneer - DOWN



Sunray - OUT