



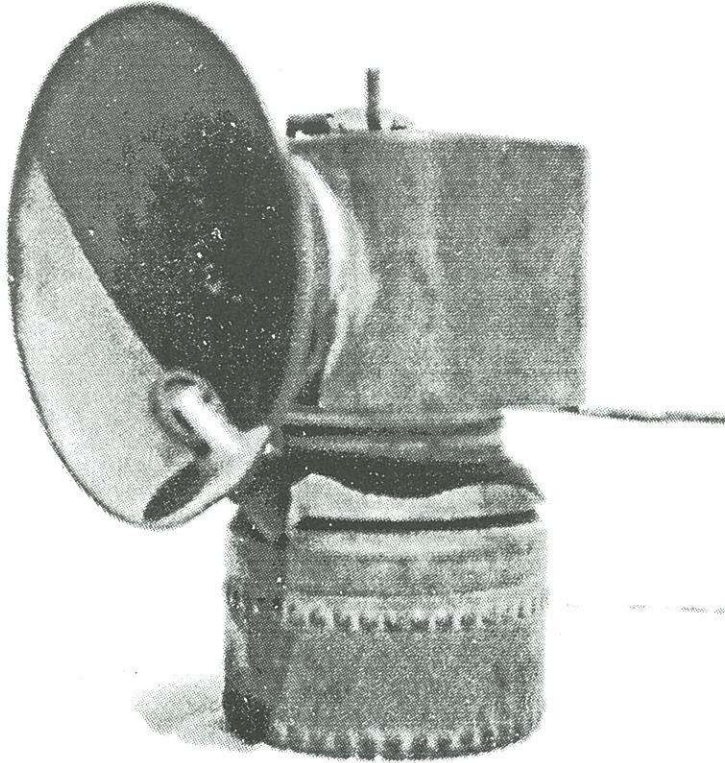
BITS



Clickster Scores Again!

Yes, Larry Click has upgraded his **Anton Square Light**. This lamp is the style with the wire brace, unlike some others which have the flat strap soldered to the sides. Like all Anton Square Lights, the reflector screws into a socket.

Below is a salesman's sample of a canvas miner's cap. It has the three patent dates on it with Pat. Nov. 7, 1911 on the bill, front part where the lamp hangs, and inside on top of canvas. The cap is 2" high and 3 1/2" in diameter. The cap has two 1/4" canvas bands sewn around it. The oil wick is 1 1/2" tall.



Actual Size