

Wolf of America 1914

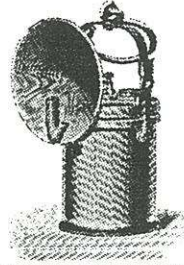
submitted by Len Gaska

These lamps represent the entire American Wolf line-up as of 1914. They are from an original catalog. At this date in time all of the lamps were imported from Germany. This vintage lamp can be identified by an oval brass plaque that reads;

Wolf Safety Lamp Co of America, Inc.
Crystal Building
47/49 West Street
New York, N.Y. U.S.A.

These are the earlier of the American Wolf lamps prior to the post-war takeover and re-location to Brooklyn. All are highly collectible.

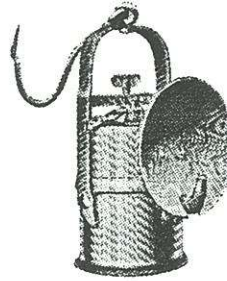
WOLF SAFETY LAMP COMPANY OF AMERICA, INC., NEW YORK, N. Y.



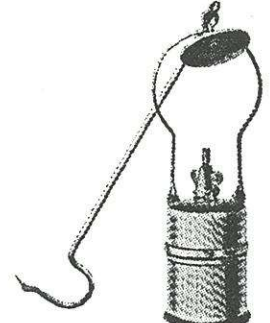
Wolf's Acetylene Lamp with Simplified Bridle Lock
Order No. 856.
Made in Steel or Brass and in Sizes O, I, II or III.



Wolf's Acetylene Lamp with Ordinary Bridle Lock
Order No. 800.
Made in Steel or Brass and in Sizes O, I, II or III.



Wolf's Acetylene Lamp with Stiff Bridle Lever Lock
Order No. 906a.
Made in Steel or Brass and in Sizes O, I, II or III.



Wolf's Acetylene Lamp with Wing Nut Spindle Lock
Order No. 909.
Made in Steel or Brass and in Sizes O, I, II or III.
Extra parts on following pages

When ordering, please state style of hood, whether the lamp is wanted in steel or brass, at the same time informing us of the size, which is desired.

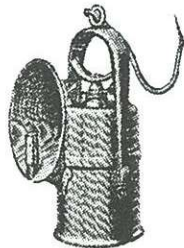
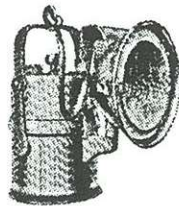
13

WOLF SAFETY LAMP COMPANY OF AMERICA, INC., NEW YORK, N. Y.

Wolf's Acetylene Hand Lamps



Wolf's Acetylene Lamp with Ordinary Bridle Lock
Order No. 850.
Made in Steel or Brass and in Sizes O, I, II or III.

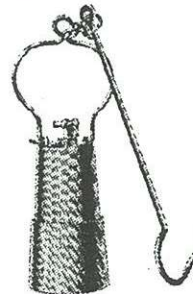


Wolf's Acetylene Lamp with Wolf Wedge Lock
Order No. 851b.
Made in Steel or Brass and in Sizes I, II or III.

This lamp can be delivered with an extra carbide holder with two covers. For list of parts see next page.

When ordering, please state style of hood, whether the Lamp is wanted in Steel or Brass, at the same time informing us of the size, which is desired.

WOLF SAFETY LAMP COMPANY OF AMERICA, INC., NEW YORK, N. Y.

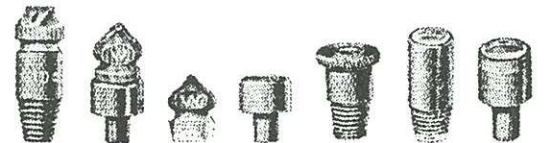


Wolf's Acetylene Lamp with screw lock
(Shell Lamp)
Order No. 813.
Made in one size only and in brass and aluminum.



Wolf's Acetylene Cap Lamp. Can also be Used as Hand Lamp.
Order No. 811a.
Made in brass, Nickel-plated, and in one size only.

Burners with Two Openings.



Order Nos. 877 878 879 880 881 882 882a

Burners with One Opening.



Order Nos. 890 891 892 893 894