

The Rex Cap Lamp

Len Gaska



The Rex Lamp: An English copy of the horizontal Justrite. Stamping on the left side is shown below.



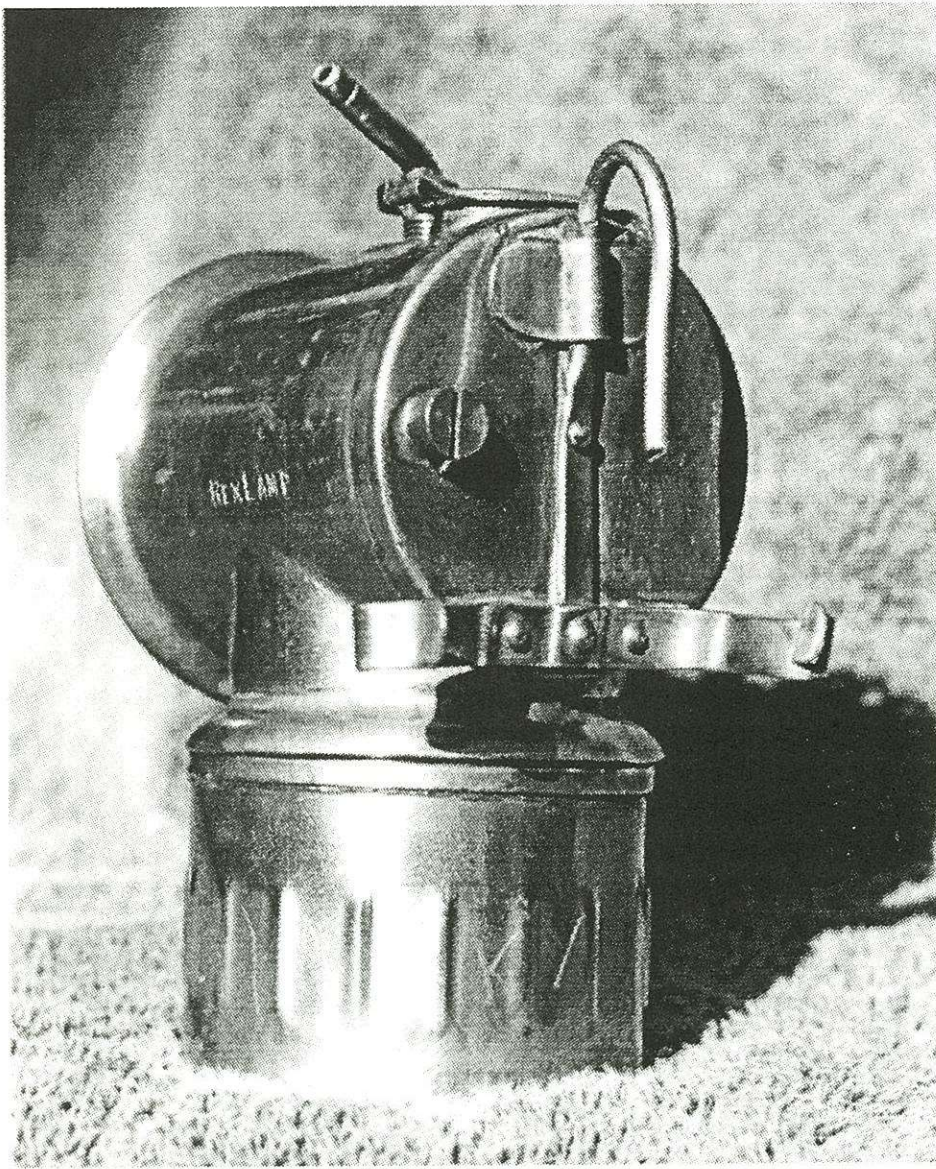
I first learned of the Rex lamp from the Newsletter of Australian Mining Collectibles.¹ I was immediately attracted to the Rex because of its similarity to horizontal Justrites, a specialty of mine. Imagine my surprise when several months later I was able to obtain a virtually mint Rex. Although the lamp I obtained (left) is very similar to the one Stephen McCabe illustrated, there are a few differences. The lamp I obtained has a wire hook and braces, as well as an oval water door, while McCabe's has a spade mount and round door. My example has no markings on the bottom and the water feed is different.

This Rex has a rather unique lighter in that it passes completely through the water tank. As seen on the following page, the small screw at the left side of the lamp is part of the lighter where the flint is inserted.

The Rex is made by the Premier Lamp and Engineering Co. which is still manufacturing carbide lamps today.

References:

1. McCabe, Stephen, *The Newsletter of Australian Mining Collectibles*, Vo. 1 No. 1, Autumn 1992.



Viewed from behind, the most unique feature of the Rex Lamp is the flint chamber which extends through the entire water tank.

Top view shows the company stamp, oval water door, and water lever notches.

