

The Justrite Specials

by Len Gaska

Although it is unclear if the Special series were the first hand lamps produced by Justrite, they certainly were one of the first. They first appeared in the Justrite catalog number 2 (circa 1914) and ads dated 1914. The series consists of three similar lamps differing in their type of handle or attachment device.

The Arizona Special

(Justrite model No. 83)

This lamp has a typical bail and hook. Shown below are two varieties of the Arizona Special with a horizontal cap lamp for comparison. The two lamps differ in the location of the burner tube. Later models have the burner at the bottom of the reflector and earlier models have the burner tube centered within the reflector. The Arizona Special also has variations in the water lever; the earlier "upturned" lever and the later turned-under lever.

The Western Special

(Justrite model No. 105)

The Western Special was a supervisors' lamp as evidenced by its hand handles (following page). Typical of that style of lamp, most are nickel-plated. The Western Special, like the Arizona, is found with both center mounted and low mounted burners. The Western Special is also known with a blackout hood (reported by Bill Spence in the *Underground Lamp Post* v4;n7 p4, Fall 1986).

The Anaconda Special

(Justrite model No. 83)

The Anaconda had only a steel hook on the back and was normally used with a lamp stick. Shown on the following page, the Anaconda Special is a larger version of the Justrite "candlestick" lamp which also had only a steel hook on the back. I do not know if both burner varieties are found on the Anaconda Special, but I assume that they are.

Two Arizona Specials, identified by the bail and hook, are shown next to a standard sized cap lamp for scale.

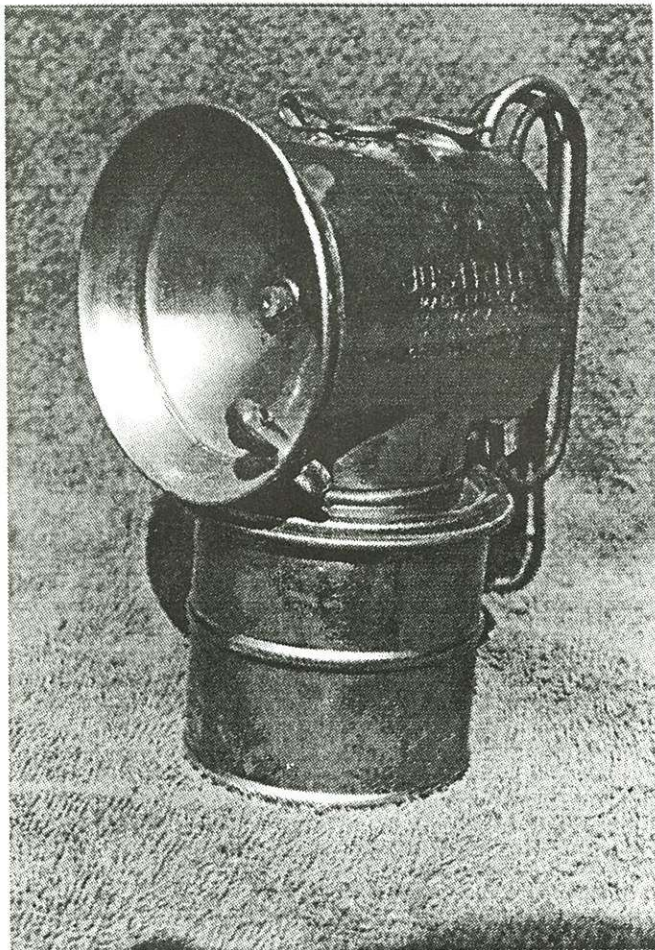
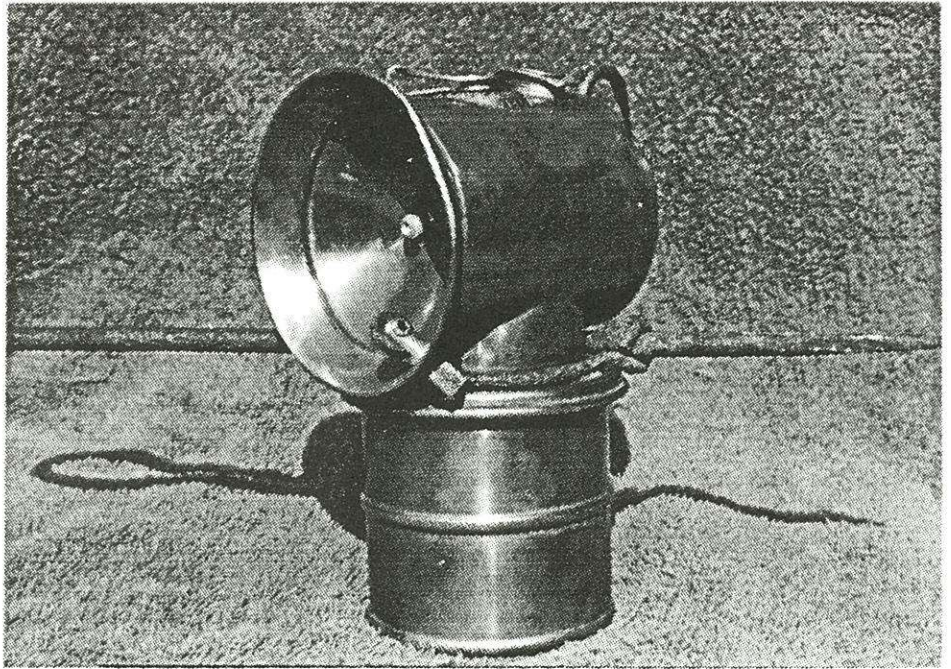
The two Specials differ in the location of the burner: one is in the center, the other emerges from the bottom of the reflector.



The Specials depicted in Justrite's Catalog No. 2 show only the center burner tip model. These hand lamps share an unusual feature with the Justrite Jumbo (see *Eureka!*, Issue 5, Winter 1993): the top attaches to the bottom via a threaded post.

The Anaconda Special (right) was a metal miners' full-shift lamp.

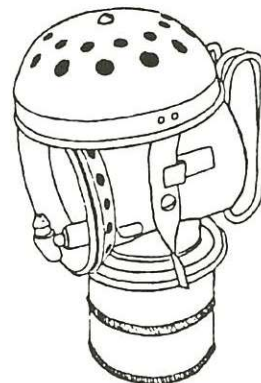
The hard rock miner was accustomed to using candlesticks. Accordingly, lamps designed for these men carried a stick attachment with a pointed steel hook.



Western Specials are essentially eight-hour supervisors' lamps: most are nickel-plated, all have hand handles.



Rear view showing the Anaconda's steel pointed hook.



A version of the Western Special with the blackout hood has been reported (left, Dave DesMarais collection).