

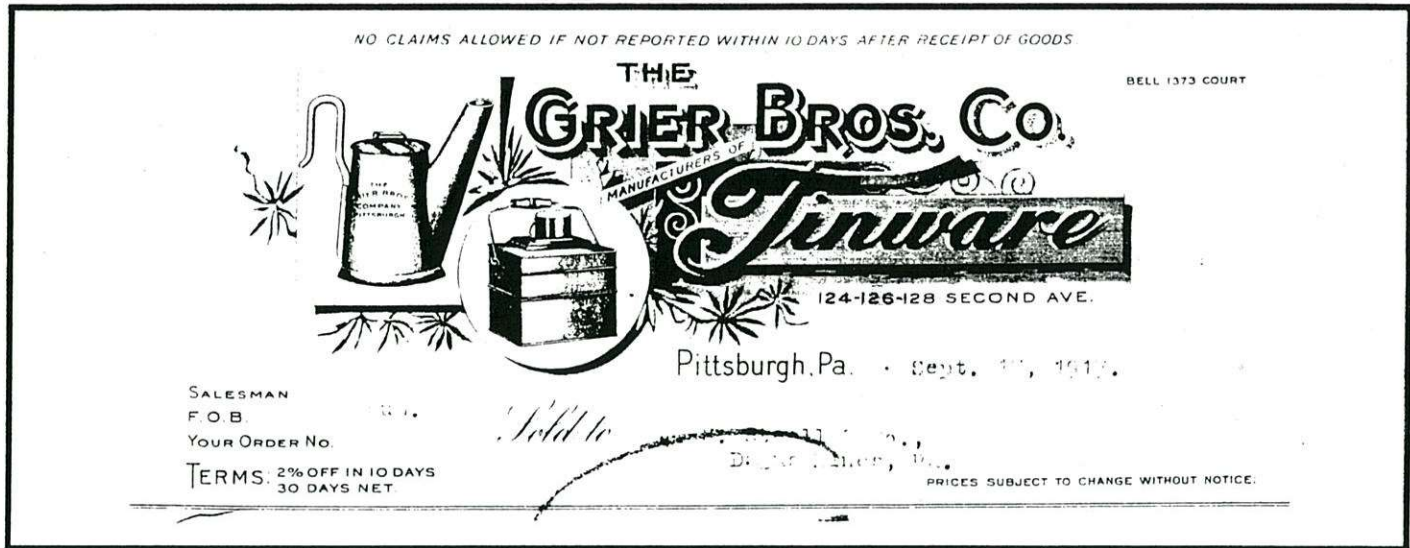
# COLLECTORS' TALK



## Grier Bros. Letterhead Assists in Dating Lamps

Len Gaska sends copies of two letterheads which form the top portion of bill receipts. The earlier one, from 1917, displays an oil-wick lamp. By this time, the oil-wicks had largely given way to carbide light. The other letterhead from 1918 shows their unique vertical Grier.

As 1918 would mark the first year of use for this letterhead, we may assume that the lamp depicted corresponds to the model being manufactured during that year. The model shown is the first "vertical" style, identified by a) upturned water-lever b) fixed reflector, and c) plain bottom-seamed base. (see MAC #7) In the five years to follow, two additional styles of the vertical lamp, as well as the Gee Bee, would be marketed.



Grier letterhead from 1917



Grier letterhead from 1918