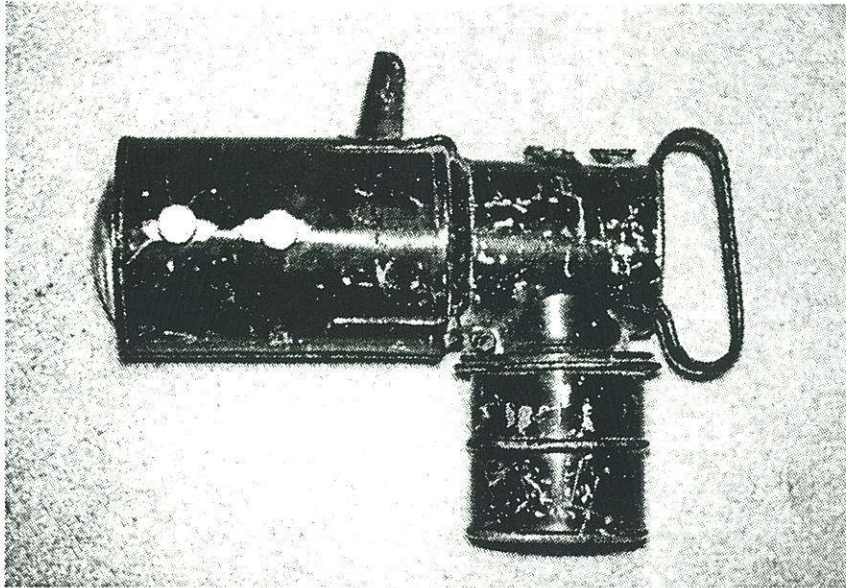




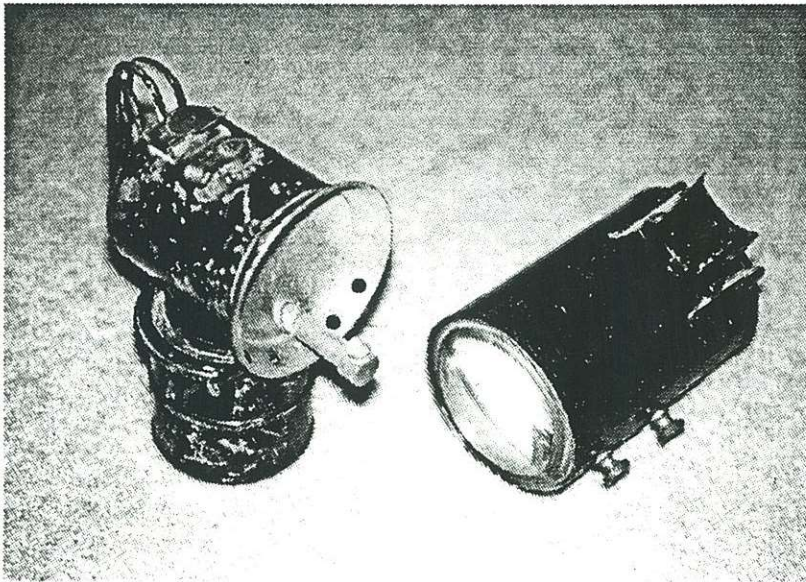
# BITS



## Big Black Justrite

Recently added to the Len Gaska collection of fine Justrites is this factory modified version of a Western Special. The finish is black paint over nickel-plated brass.

A lens tube attaches to the face of the lamp and contains two powerful lenses, adjustable with two knurled knobs that are visible from the side of the tube. A hooded vent hole exits the top of the closed tube to emit the burned acetylene.



The burner is a long upturned spout with a large twin port lava tip. The lamp is reminiscent in some ways to Baldwin's Vitak projector lamp. Whatever its intended purpose, it appears that its function is to focus a strong narrow beam of light. We're a little hesitant at this time to call it a "shooters lamp"!

We'd welcome any ideas or information our readers may have about this big black Justrite.

## More Internet Info

For those with World Wide Web access, check out the home page of the United Mine Workers of America at: <http://www.access.digex.net/~miner/> Unless you are/were a miner, you might not be interested in current issues, but there is some interesting history available at this Web site.