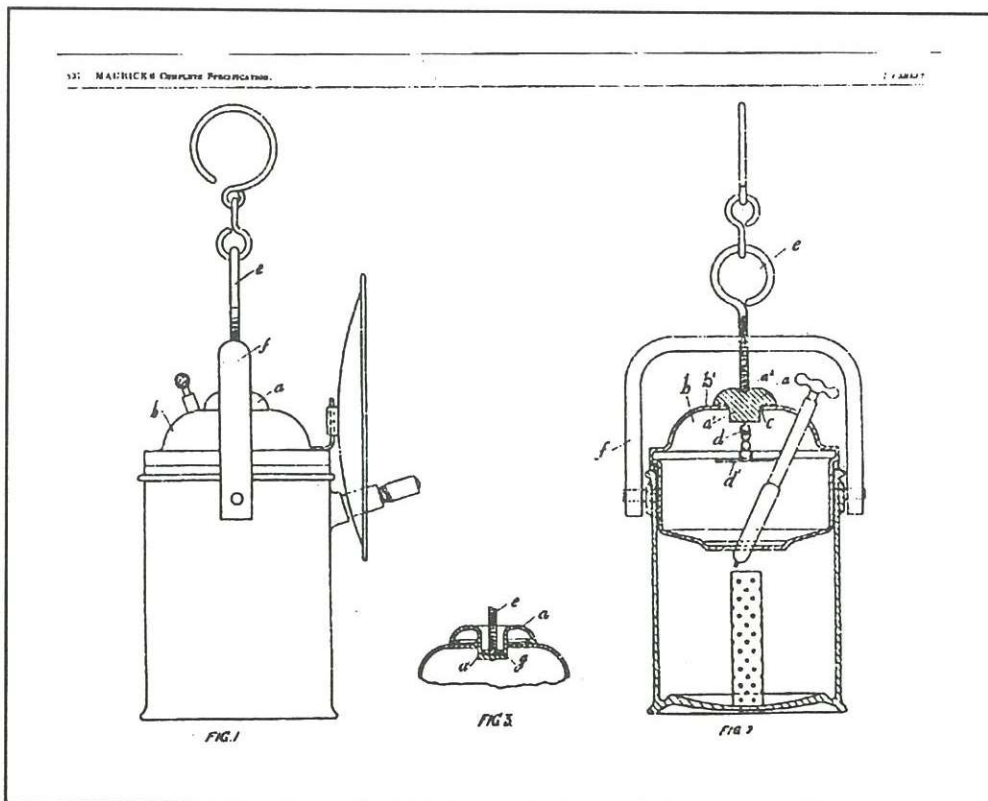


The Wolf 'Norton' Patent Lamp

by Mick Corbridge

Years ago, when I acquired my first catalogues and lists of 'Wolf of Sheffield' early carbide lamp products, I was intrigued with the style of a small pattern lamp listed as a 'Norton' (see advertisement opposite page). Later when I obtained a copy of William Maurice's patent for his combined water filler door and thumb screw pressure seat, (Pat No. 116837, dated 1918), I was fascinated to see that his original patent design was for the 'Norton' lamp as shown by the drawings below.

Up to last month, I had never even seen an example of this design of lamp, and I did not know of one in any collection. Then whilst at the well known Newark fleamarket last month, I couldn't believe my eyes when I found myself looking at the distinctive shape of a 'Norton' lamp standing solitary on a



seller's stall. A price was negotiated, and I am now the proud owner of the early example lamp shown above.

This lamp has several interesting design points showing its early manufacture date, possibly around 1920? It has an early style handle with a threaded cast boss below for the thumb screw. It has a simple bent round bar water tap, and there is no sign of a reflector mount ever being fitted. A most interesting feature is the metal hook which has a forged 'shield' shape

LIST 640A.

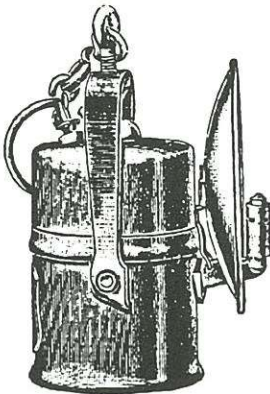
MAURICE-WOLF ACETYLENE LAMPS.

(MAURICE'S PATENT, No. 116827.)

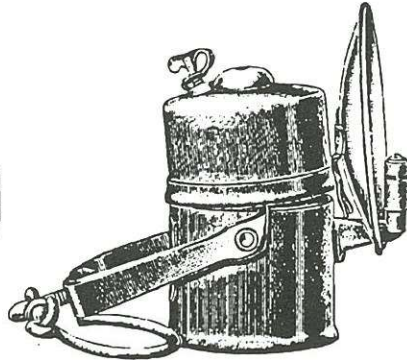
A new series of Lamps embodying all the high qualities so long characteristic of Wolf Lamps with recent improvements of great interest and utility.

Seamless steel vessels, heavily tinned, self-regulating brass valves, perfectly finished, attractive in appearance, easy to manage, very durable, and thoroughly reliable. Complete with Ten inch Solid Brass Reflectors, burners, and ring carrying handles or spike hooks, as required.

No. 60A has our special lever lifting bridle for removing water vessel easily when it sticks fast through neglect of cleaning out after use.



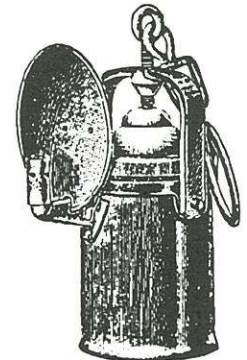
No. 60A.



No. 60A,
part opened, showing
lever lift.



STAR No. 1.
(No. 2 is the same but
with reflector.)



NORTON
(with brass rimmed
carbide container).

TYPE.	OVERALL HEIGHT INCHES.	WEIGHT LBS. OZS.	CHARGE OF CARBIDE OZS.	LIGHTING POWER C.P.	BURNING CAPACITY, HOURS.	BURNER NUMBER.	PRICE. STEEL.
60A	8½	2 12	8	20	10 to 12	B101	14/6 13/6
STAR No. 1 ... (WITHOUT REFLECTOR)	8	2 0	8	20	10 to 12	B105	12/6
STAR No. 2 ...	8	2 2	8	20	10 to 12	B105	13/-
NORTON ...	7½	1 14	5	16	5 to 6	B105	12/-

THE WOLF SAFETY LAMP CO.

(WM. MAURICE), LTD.

(SOLE OWNERS OF THE BUSINESS ESTABLISHED AT LEEDS IN 1905, AND TRANSFERRED TO SHEFFIELD IN 1913.)

~~STAR WORKS, SOUTH STREET, PARK~~
~~SAXON ROAD WORKS,~~

SHEFFIELD, 8.

TELEPHONE,
53276X
51051.

TELEGRAMS:
"WOLFLITE," SHEFFIELD

116,837

PATENT



SPECIFICATION

Application Date, Nov. 10, 1917. No. 16,505.17.

Complete Left, May 10, 1918.

Complete Accepted, June 27, 1918.

PROVISIONAL SPECIFICATION.

Improvements in Acetylene Hand Lamps.

I, WILLIAM MAURICE, F.G.S., M.I.E.E., of 338, Mushroom Lane, Sheffield, in the County of York, Mining Engineer, do hereby declare the nature of this invention to be as follows:—

My invention relates to acetylene hand lamps of the type in which an upper or water vessel is superimposed on a lower vessel or carbide container, the two vessels being held in close contact with each other to ensure a gas tight joint, by means of a screw passing through the handle or bridge, and pressing upon the crown of the water vessel. In some cases a metal pad or a metal bridge is secured upon the crown to take the thrust of the screw.

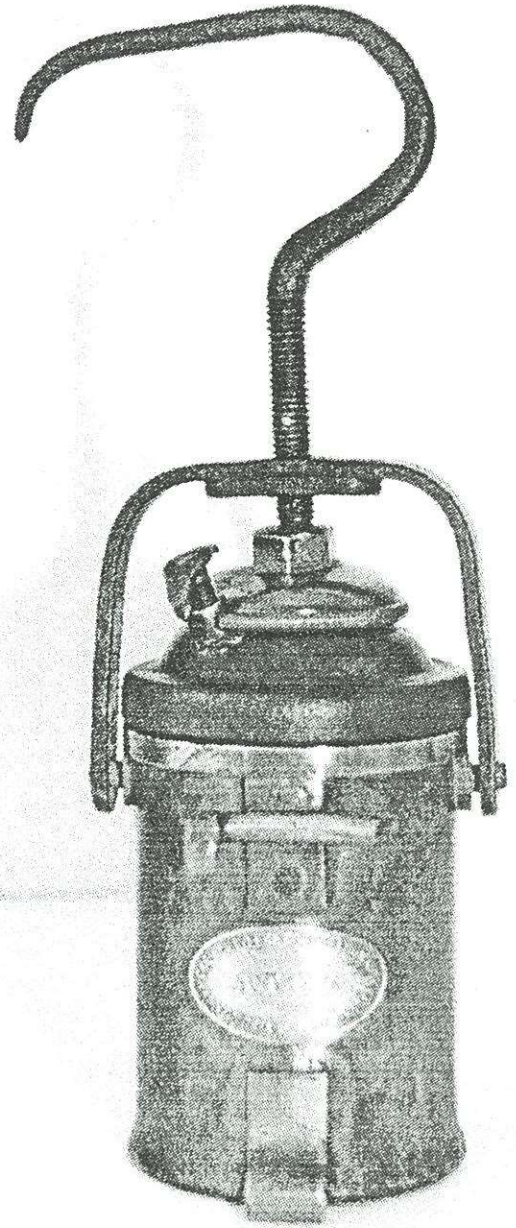
My invention consists in the employment of a pad or cap against which the screw bears, so designed as to distribute the pressure of said screw more evenly over the crown of the water vessel, and thus obviate having all the stress on the weakest part of the crown, and at the same time to provide a cover for a water filling hole placed centrally in the crown. By so placing the water hole I am able to dispense with the separate fitting and cap which is usually provided for that purpose near the periphery of the crown. The pad or cap I employ is of a mushroom formation and is made of much greater strength than the crown of the water vessel, and may be cast, stamped or pressed to the desired shape. The stalk of the mushroom cap forms a guide or plug to fit into the filling hole.

To a lug on the lower end of the stalk I attach a chain with a cross bar, of a length greater than the diameter of the filling hole, so that when the cap is removed for the purpose of charging the vessel with water the cap is not detached from the lamp, and so is not liable to be misplaced or lost.

Dated this 9th day of November, 1917.

25

R. HEBER RADFORD, SON & SQUIRE,
For the Applicant,
15, Saint James' Row, Sheffield.



'Acetylene Corporation of G.B.'

on the end of the bottom small radius loop. I have never seen this design of hook on a carbide lamp before and it looked to me to be continental where this design was often used on frog lamps. These thoughts are now fairly well confirmed when I came by a copy of a works order from Wolf of Sheffield to Frieman & Wolf - Germany (opposite page). This order dated 1926, shows that although the lamp was a William Maurice design, (as stated on the order), the Norton lamps were actually manufactured and supplied from Germany, then at 4 pounds each, (I'll have 100 please!).

My lamp has the brass water door plug with incuse lettering 'Maurice's Pat. No. 116837; it also has the Wolf of Sheffield brass shield on the back of the lamp; were these fitted in Germany or when the lamps arrived at Sheffield?

The only other cannister lamp that I have come across of similar design, i.e. small pattern with a domed top and central plug water door; is the possibly even harder to find model manufactured by 'The Acetylene Corporation of Great Britain'. This lamp is of even earlier manufacture, i.e. around 1910, and the one in my collection is shown above. This lamp has a brass domed cap as a water door and combined screw lock base, and is not actually a plug as later patented by Maurice.

FRIEMANN & WOLF, G.M.B.H., ZWICKAU I. S.

MASCHINEN- UND GRUBENLAMPEN-FABRIK

Telegraph-Adresse
F. & W. Zwickau

Telegraph-Adressen
2926 - 2928

Telegraph-Adressen
2926 - 2928

Zwickau, den *June 15th* 19*11*

Bankkonten:

Reichsbank-Giro
Zwickauer Stadtbank A.G. Zwickau
Dresdener Bank, Filiale Zwickau
Breitbank, Abteilung der Allgemeinen
Deutschen Creditanstalt, Zwickau
Commerz- und Privatbank, Zwickau
Postcheckkonto Leipzig 1476

Zweigniederlassungen in

Duisburg, Dortmund, Saarbrücken
Waldenburg (Schles.), Kattowitz (O-Schl.)
Karlsbad (Böhmen), Mähr.-Osttau (Mähr.)
Göttich (Belgien), Jeumont (Frankreich)
Sheffield (England), New-York (U.S.A.)

Vertreter in allen Bergbauregionen der Welt

*The Wolf Safety Lamp Co. (Wm. Maurice) Ltd.
The Works, South Street, Paris.*

Sheffield, England.

RECHNUNG

erkaufst. Fcl.

Zahlnar per Kasse.

F. & W.		Sachen Ihnen auf Ihre werte Rechnung und Gefahr	
<i>15.5.16</i>	<i>1878/84</i>	<i>We have forwarded by Lord Nelson Express</i>	
		<i>to Rothenturm, Stamburg via Grimsby</i>	
		<i>through Billiffe.</i>	
		<i>by rail</i>	<i>2 2/5</i>
		<i>Order No. 2357 April 20th 11</i>	<i>18/10</i>
		<i>250 Your patent bottom lamps with</i>	
		<i>glass reflectors No. 863 sized, brass</i>	
		<i>tubes, without burners, brass base</i>	
		<i>lets to be right and lock type 24</i>	<i>18/10</i>
		<i>by rail</i>	<i>2 2/5</i>
		<i>Order No. 2370 May 21st 11</i>	
		<i>56 open acetylene lamps No. 12 a,</i>	
		<i>in aluminium, with reflectors 27</i>	<i>135/10</i>
		<i>19 open acetylene lamps No. 863 in</i>	
		<i>aluminium base No. 2370 with 28</i>	<i>152/10</i>
		<i>Freight sh</i>	<i>152/10</i>

Verpackung wird zum niedrigsten Preis berechnet und nicht zurückgenommen.
Erfüllungsort für Lieferung und Zahlung ist Zwickau i. S.

An order from Germany to Wm. Maurice includes "Your patent Norton lamps".