

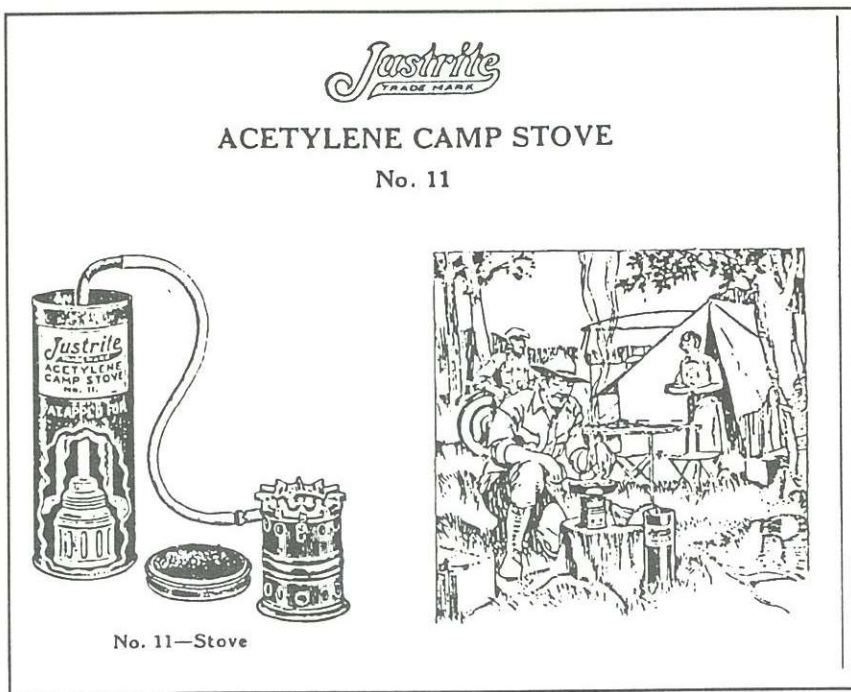
# Catalog Info

by Mick Coorbridge

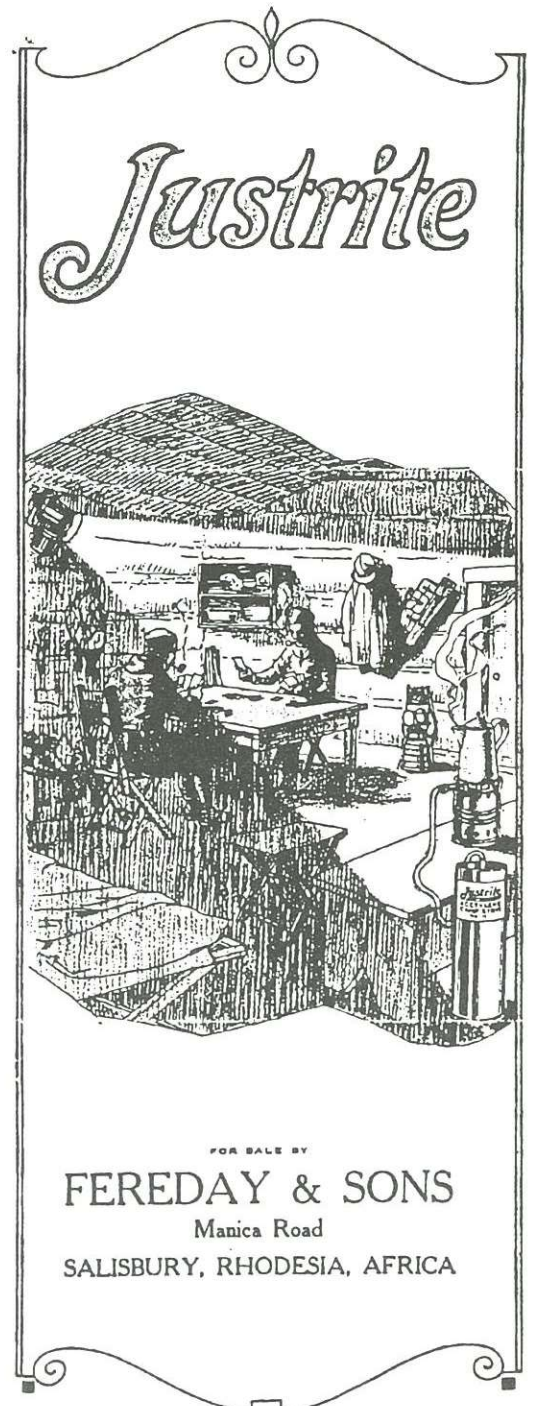
As I was organising my resubscription for EUREKA! , I thought that I would drop you a line expressing my interest in the 'Hunters Special' article and your comments on the same in the last edition. I have an interest in similar pattern lamps and I enclose for your interest a few photocopies from various catalogues which you may or may not have seen before.

## Justrite No. 11 Camp Stove

The figure below is from the Justrite No. 4, Catalog (which was for export). It shows the acetylene camping stove that you were referring to.



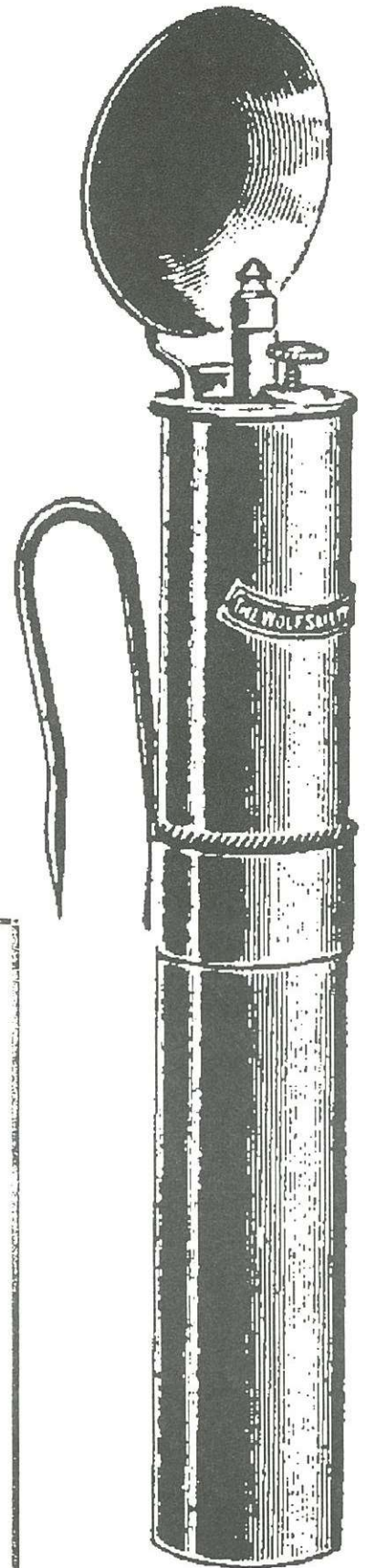
The second illustration (right) is from an advertising leaflet from Africa. It shows the stove in use.



# Wolf Acetylene Candle No. 88

This is a carbide candle arrangement that is similar to the American 'Arnold', and this is taken from a 1906 catalogue 'Wolf of Leeds'.

The Arnold patent was from 1912, and may not have seen actual production until later. It was produced by the Ainsworth Company, founded by William Ainsworth who was born in England, and may well have had ties to manufacturers and designs from his mother country.



## Wolf Hunter's and Trapper's Lamps

The ads below are from Wolf of Sheffield leaflets and show a rabbit trapper's lamp as well as belt generator lamps for hunting and camping.

### Wolf Acetylene Rabbit Trapper Lamp

**No. 919a**

with brass screw joint, special handle and reflector bonnet is the most suitable lamp for rabbiting on the market

**Greatest stability and durability • Simplicity in construction and use**

**Brilliant and constantly uniform light • Minimum consumption of carbide**

Order No.	Cable Ward	Weight	Height	Burning capacity	Lighting power	Consumption of carbide	Material of construction	Price
919a	Acero	1 lb 10 oz.	11 in.	8 hrs.	16 c.p.	5 oz.	brass steel and brass	

### The Wolf Acetylene Hunting Lamp

for Hunting, Fishing, Boating, Trapping, Camping, Farming etc.

with removable concentrating lens for spot light and hinged darkening door can be worn on any hat or cap and throws the light where the hunter is looking leaving both his hands free. The Wolf Hunting Lamp throws a brilliant white light 200 to 800 feet depending on atmospheric conditions, colour and size of object and nature of background.

*Wolf Acetylene Hunting Lamp No. 815. Codeword „Camp“* consisting of generator with bell, hose, head lamp with removable concentrating lens, hinged darkening door and strap for fastening lamp to hat, weight 2 lbs. 6 oz. . . . . Price . . . . .

*The same lamp as above, No. 816. Codeword „Camping“*

but without strap for fastening to hat, the head lamp being provided with special hooks for attachment to cap, weight 2 lbs. 8 oz. . . . . Price . . . . .

Canvas cap, cotton lined with metal and leather shield, weight 7 oz. . . . . Price . . . . .

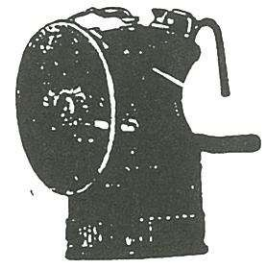
No. 88.



## WOLF Acetylene Cap Lamps



Colibri No. 911A.



Wolf, No. 911C.

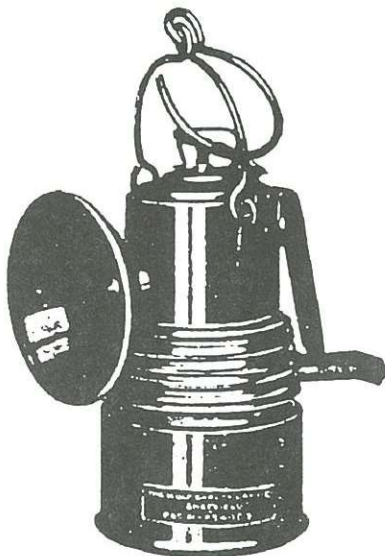
Above is a copy of a "Wolf of Sheffield" advertisement. Both lamps are interesting. The lamp on the left shows the "early style" water lever, and shows the wet-mine reflector. The lamp on the right is so similar to the Brooklyn Wolf cap lamp that I would hazard a guess that the U.S. and English varieties had a common manufacturing source.

## WOLF ACETYLENE LAMPS for MINING and SPECIAL APPLICATIONS.

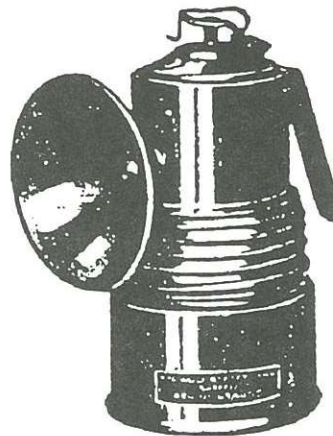
(FOR ENQUIRIES LAMP NUMBER ONLY NEED BE QUOTED.)



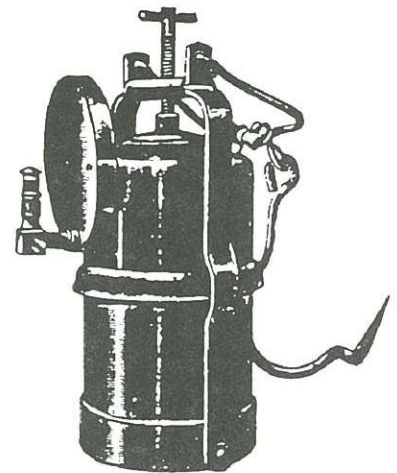
B 640



86



85



B 1914

Again, this "Wolf of Sheffield" ad shows a lamp (third from left) that is nearly identical to cap lamps that bear the U.S. Brooklyn plaque. A common manufacturer is likely.

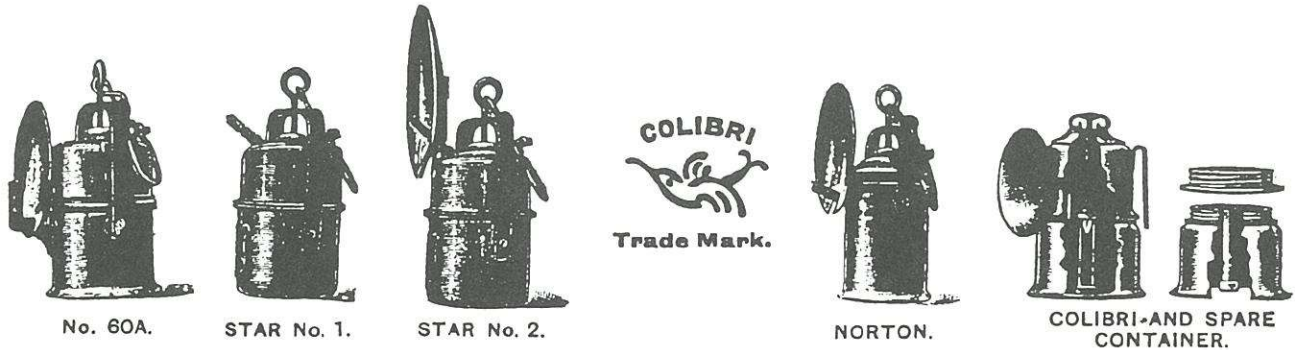
The illustration on the opposite page also shows a very similar cap lamp in the upper tier. But most interesting is the Pioneer and Sunray lamps shown at the bottom. These are clearly lamps of American manufacture. It appears that "Pioneer" was just as valid a lamp name for the models sold in England as it was in the U.S.

# MAURICE-WOLF ACETYLENE LAMPS.

(MAURICE'S PATENT, No. 116827.)

A new series of Lamps embodying all the high qualities so long characteristic of Wolf lamps with recent improvements of great interest.

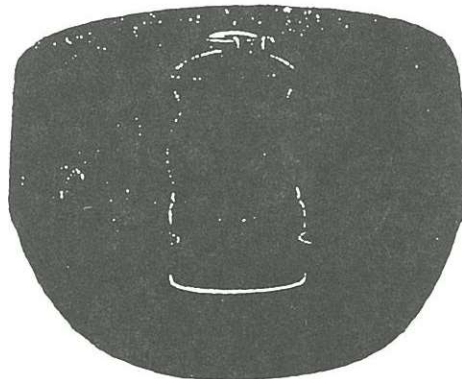
Seamless steel vessels, self-regulating brass valves, well finished, attractive in appearance, easy to manage, very durable, and thoroughly reliable. Complete with reflectors, burners, ring carrying handles or spike hooks, as required.



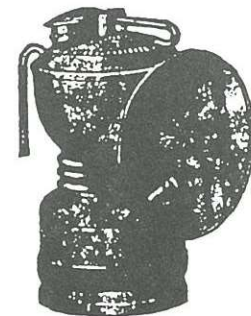
TYPE.	OVERALL HEIGHT INCHES.	WEIGHT		CHARGE OF CARBIDE. OZS.	LIGHTING POWER. C.P.	BURNING CAPACITY. HOURS.	BURNER NUMBER.	PRICE.
		LBS.	OZS.					
60A ... ..	8½	2	8	8	20	10 to 12	B101	21/-
STAR No. 1 ... (WITHOUT REFLECTOR)	8	2	0	8	20	10 to 12	B105	18/-
STAR No. 2 ...	8	2	2	8	20	10 to 12	B105	18/9
NORTON ...	7¾	1	8	5	16	5 to 6	B105	18/-
COLIBRI ... (BRASS CAP LAMP)	4½	0	5	2	12	4 to 5	114	6/- Spare Containers, 1,6



PIONEER CAP LAMP No. 25.  
Brass, with Windshield and Self-Lighter. Price 10/6.



MINER'S CAP  
With Lamp Carrier.  
Price 2/3.



SUNRAY CAP LAMP No. 15.  
Brass Nickelled, with Self-Lighter. Price 10/6.

## THE WOLF SAFETY LAMP CO.

(WM. MAURICE LTD.)

(SOLE OWNERS OF THE BUSINESS ESTABLISHED AT LEEDS IN 1905, AND TRANSFERRED TO SHEFFIELD IN 1912.)

STAR WORKS, YOUNG STREET,

SHEFFIELD.

TELEPHONE,  
879 CENTRAL.

TELEGRAMS:  
"WOLFLITE," SHEFFIELD.