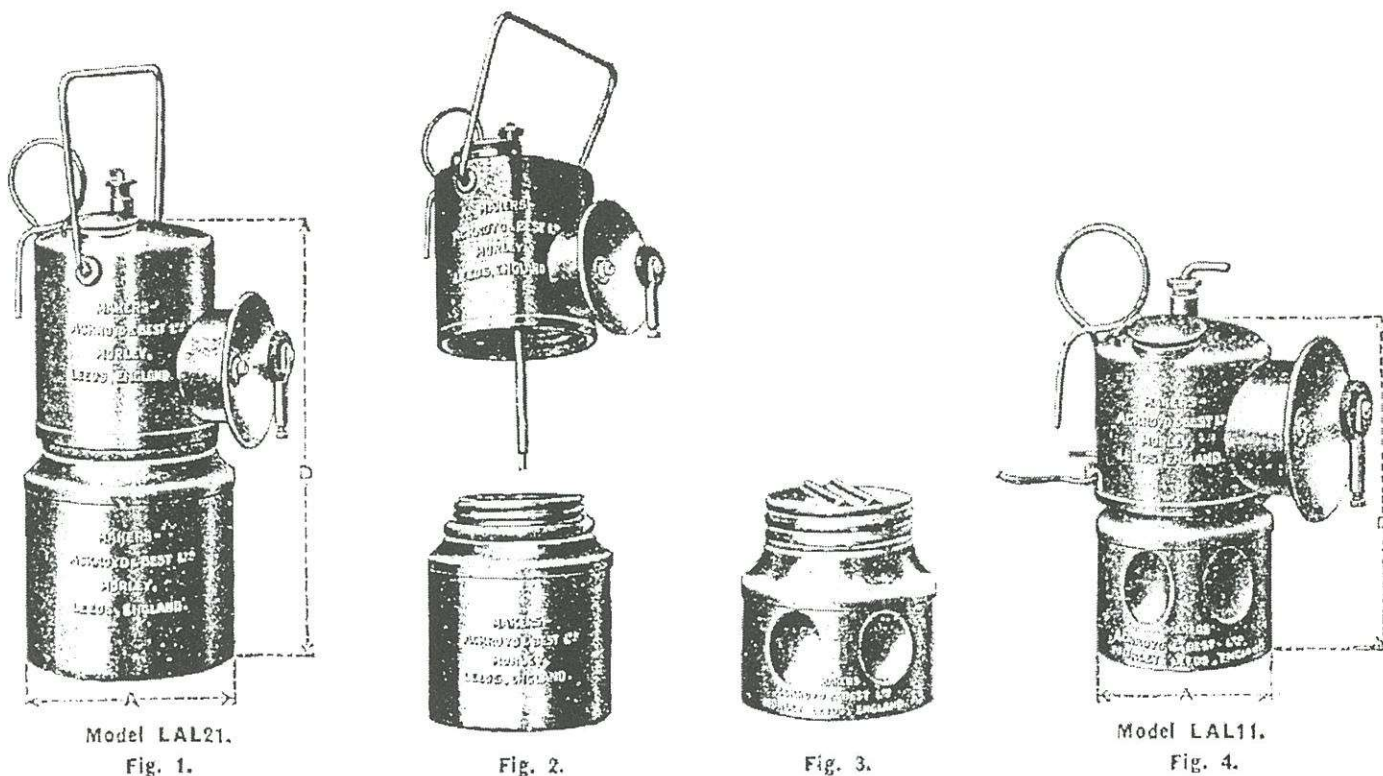


Ackroyd & Best Carbide Lamps

by Mick Coorbridge

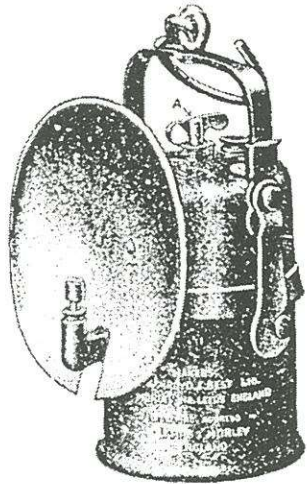


In the last issue of Eureka, Manfred Stutzer shows several copies of safety lamp leaflets issued by 'Hailwood & Ackroyd' of Morley, Leeds, England. This firm was formerly 'Ackroyd & Best'. I have recently acquired advertisement leaflets for miners' carbide lamps from this original firm.

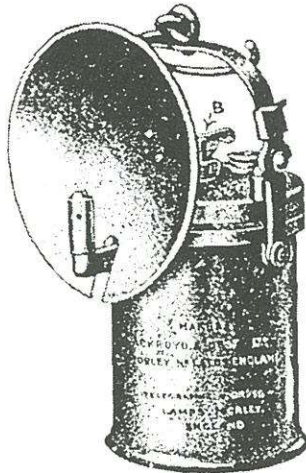
The first (above) shows the 'LAL 11' cap lamp of which I have never seen an example of in any collection and so I have to assume it rare. They were advertised over a fairly long period, and so I have to believe that they were actually produced and sold. The lamp on the left was a hand lamp and was available in two sizes in brass or steel. The lamp shown right was a cap lamp, and was offered in brass only.

These lamps bear some resemblance to the early American Baldwin lamps; the water feed, the waterdoor, the dropper end, and the loop above the hook. Also note the indented grips in the base of the cap lamp as well as the different side-mount stiker mechanism. We may never know whether these were imported to the UK or manufactured on site.

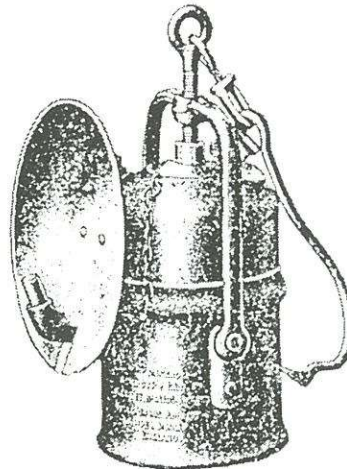
Acetylene Lamps for Mines and Quarries.



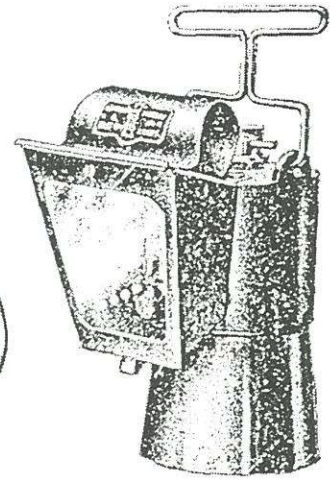
Model LAL60.



Model LAL65.



Model LAL80.



Model LAL66.



The second leaflet is of particular interest to me with its listing of the lamp no. 'LAL 66'. In Eureka no. 20, on page 7, I show similar pattern lamps manufactured by Thorn & Hoddle. This recent information show that the same pattern lamp, but having a more practical flame hod arrangement was manufactured by Ackroyd & Best.

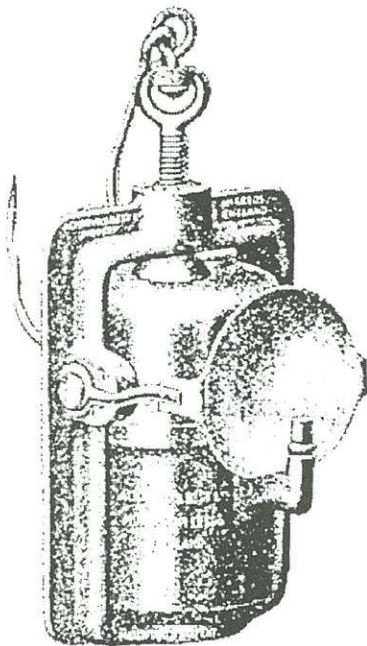


Fig. 1. LAMP LAL35.

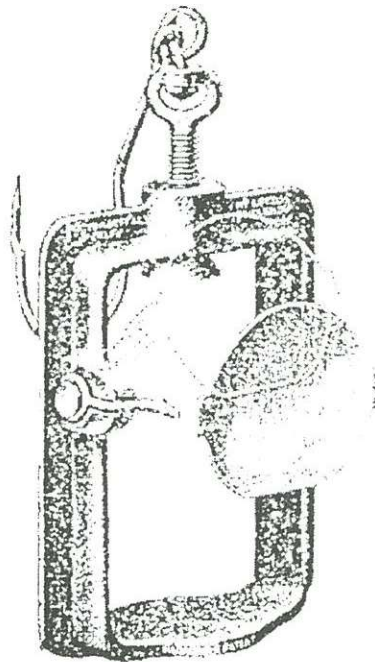


Fig. 2.

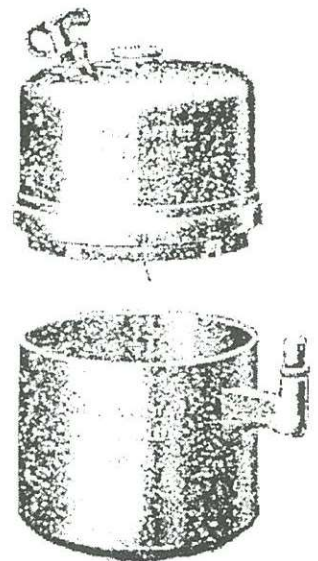


Fig. 3.

The final sheet shows a unique style of mining lamp pattern where the lamp body is supported and held fastened by a heavy metal frame which also houses a swivel up reflector. To me this lamp is a gem, and I have my fingers crossed that one day one will come my way. This was described in the brochure as the Hailwood Acetylene Hand Lamp, and the clamp was HAILWD-CLAMP (that's how they spelled it)!