

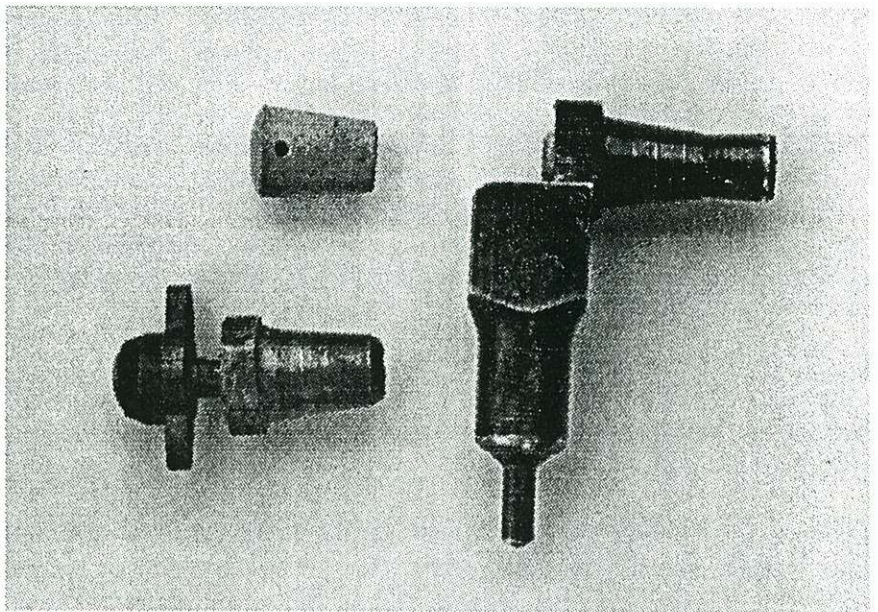
## Tall Door Baldwin

Errol Christman sends these photos of an early Baldwin cap lamp he has recently acquired. Note the tall collar for the water door. Errol speculates that this may be an adaptation for use with a candleholder. He has even found a stick in his own collection that fits just fine.



## Another Tip-cleaner Tip

Mike McLaughlin has found this interesting carbide burner tip which has its own built-in wire cleaner. It is operated by depressing the "propeller" which drives the lava tip down over a wire. Shown in the photo is the new tip alongside a Shanko tip-cleaner and a standard 4-hole lava tip. Mike speculates that this may be a Justrite product, and would be interested in obtaining more information on the device.



Side



Angle



Depressed



Top



Bottom