

THE JUSTRITE #44 BELT GENERATOR HEAD-LIGHT

by Ted Bobrink
12851 Kendall Way
Redlands, California 92373

The Justrite #44 acetylene head-light is one of the most unique miners' lamps I can think of. I will be the first to admit that the belt generator type lamps just do not seem to be of much interest to most collectors. I am speaking of the ones we see the most, such as the Brilliant Searchlight and the later model #88 Justrite. Those lamps have very large head lamps and were advertised mainly to the public as hunting lamps.

The Justrite #44 is in a class of its own. First of all, it is the earliest of all of the belt generator lamps advertised to the mining trade. Patented on September 1, 1914, it started showing up in the Justrite catalogs soon after. This style lamp was also available in a mine car model.

The most unique feature of the Justrite #44 is the small nickel plated head lamp that resembles an early automobile head-light. The outside lens is hinged in the front so that you can service the inside bulls-eye lens and burner tip. On the left side of the lamp there is a striker that throws the sparks inside the burner chamber. The burner mechanism is attached to the hat hook and side braces, and can be pulled off for repair.

CARBIDE LAMP

Justrite
TRADE MARK



No. 44

STRONG—DURABLE—COMPACT

For

MOTORMEN, MINERS

The belt generator consists of two steel tanks painted black, a bottom carbide container and a top water container. The two tanks are held together by a locking clamp. There is a very attractive brass plate on the lower tank that reads:

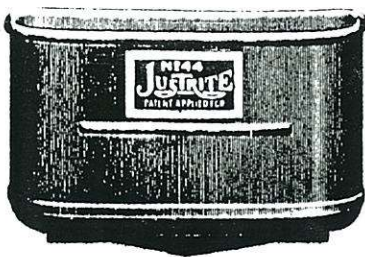
"NO. 44 JUSTRITE
PATENTED SEPT. 1 1914."



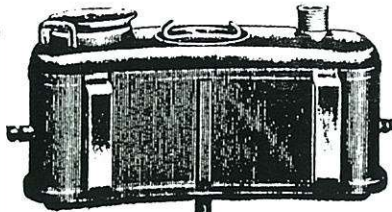
The Justrite #44 with the head-light mounted on a miners' soft hat and showing the original canvas belt.

Justrite
TRADE MARK

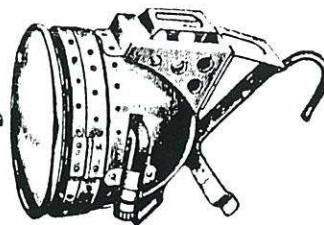
REPAIR PARTS FOR ACETYLENE HEAD-LIGHT



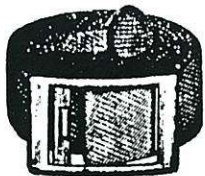
No. 40-C
BOTTOM-CARBIDE CONTAINER



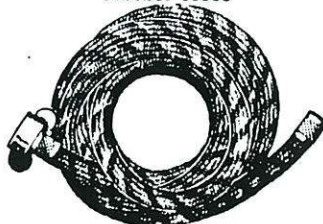
No. 40-W
TOP-WATER CONTAINER



No. 40-L—HEAD LAMP—WITH
HOOK AND SPRING CLASP,
GLASS LENS AND LIGHTER



No. 41. BELT
For Lighter Parts, See Page 37.



No. 42. 4 FEET LONG
COVERED WITH FABRIC
Wing Nut and Ferrule Included
FOR PRICES, SEE PAGE 75.



No. 48
GLASS LENS
FOR DOOR



No. 49
SPECIAL
LENS
FOR FRAME
CONTINUED

The "Liberty" water valve is located on top and in the middle of the water container. A hinged lid, similar to that on an oil lamp, is located on the right side. On the left side is the gas outlet with a fabric covered rubber hose that connects the generator to the head lamp.

The belt that comes with the lamp and holds the generator on the hip is made of canvas and has a small brass buckle similar to the ones used in the Army.

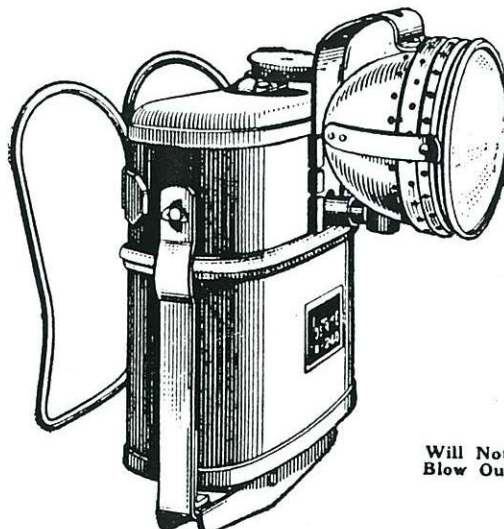
The Mine Car Lamp is just about the same in construction as that of the mines' head lamp, only they eliminated the rubber hose. Instead, the gas outlet comes out of the front of the generator with the lamp clamping directly onto the burner gas outlet. As you can see by the ad, you can use the Mine Car Lamp as either a tail light or a head light simply by changing the lens from red to clear.

Of all the belt generator type carbide miners' lamps, the Justrite #44 will be the most difficult to find, especially complete with the original belt, rubber hose and bulls-eye lens. When, and if you are lucky enough to find a Justrite #44, it will display well with a miners' hat, just the way you saw it in the ad on the cover of Issue Number 14 (Spring 1992) of the Mining Artifact Collector.

CARBIDE LAMP

FOR
MINE CARS

Can Be Used as
TAIL-LIGHT OR HEAD LIGHT



Will Not
Blow Out

PATENTED

It is SAFE, FOOL-PROOF, STRONG, DURABLE and adjustable to fit any mine car. It is absolutely dependable under the most severe conditions.