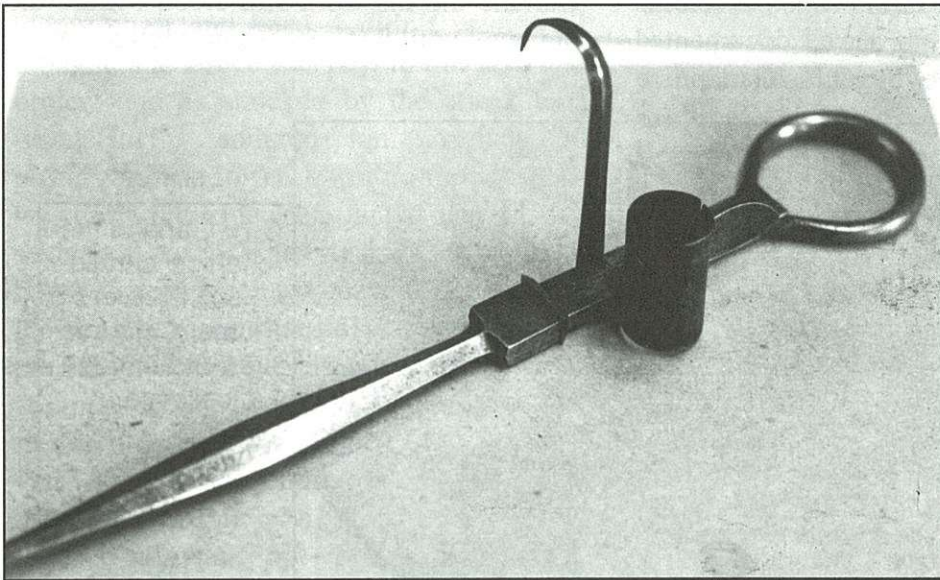


## MECHANICAL CANDLESTICKS

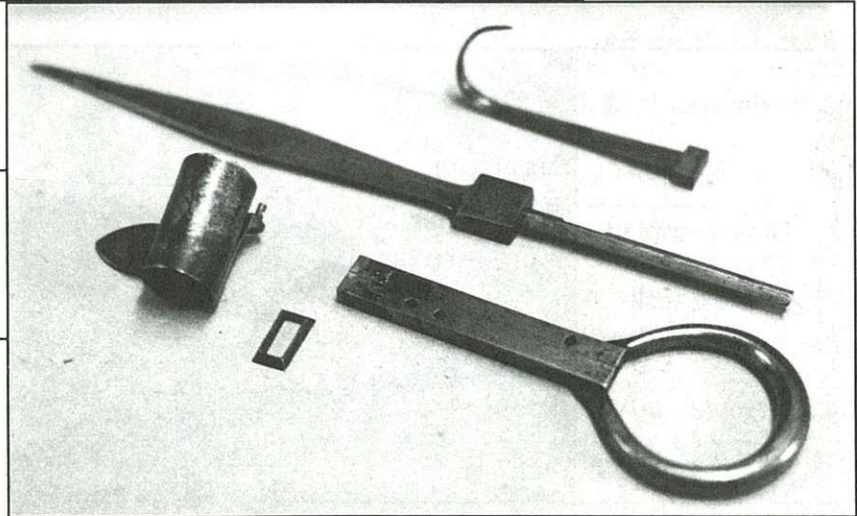
By Leo Stambaugh

These two mechanical candlesticks show a craftsmanship that is remarkable. Any candlestick that comes apart is usually a good example of workmanship, but these two have an added artistic quality that sets them apart. The first stick surfaced in the Pacific Northwest with no history known. The daggerlike spear is a style I have never

seen before. The rectangular locking ring keeps the spear from spreading the body of the stick. Both of these examples use a disassembling style that is documented in the Gabriel Wertz patented candlestick. The body end of the spear is diamond shaped in cross section and fits tightly in a similar diamond shape channel in the body of the han-



Disassembling candlestick discovered in the Pacific Northwest. Possible connection to Gabriel Wertz patent. Leo Stambaugh collection.

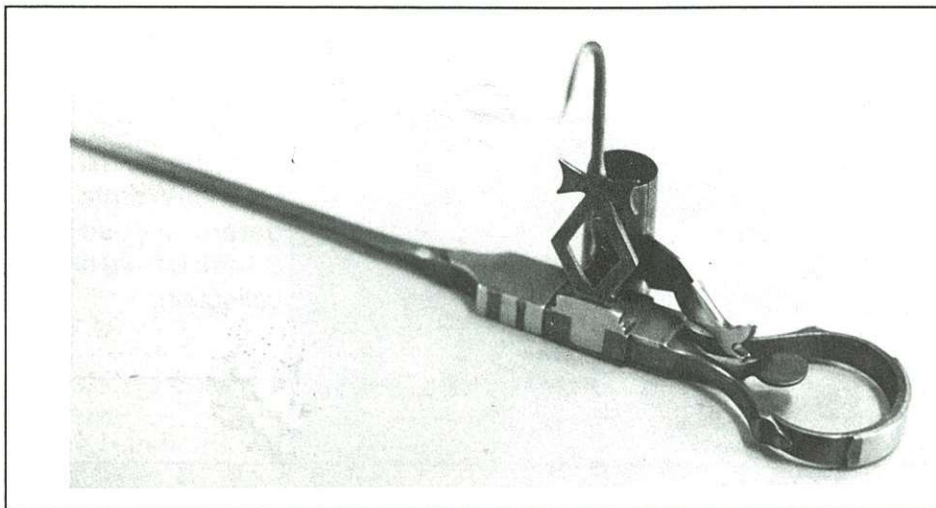


Disassembled candlestick from the Pacific Northwest.

dle. The thimble has two lugs which fit in a hole on the body. The lugs have V-shaped notches which line up with the diamond shaped channel so that when the spear is inserted it engages the notches and locks the thimble firmly in place. The Dagger stick and the Werntz patent both have a hook which is inserted in a close fitting slot that locks the spear in position until the hook is released.

The second stick has a spring tab in the handle with a notch that grabs the end of the spear and locks it until pushed to release it. The second stick has a well documented history. It was made by C.H. Garland, a

noted metalsmith who made the great 'combination lock candlesticks' in Silver Plume, Colorado. One of the family members still lives here and owns a nice example of the combination lock sticks made by his grandfather. The stick in the photo was left by Mr. Garland with the proprietress of a hotel in Silver Plume because he didn't have money to pay his bill. He left the area for Idaho and died there. The stick has ten brass inlays and a beautiful lady's leg with boot thumtbat. The tool shed where Mr. Garland did his work still stood behind the old hotel until last year when it fell apart.



C.H. Garland mechanical candlestick, Silver Plume, Colorado. Leo Stambaugh collection.

Disassembled C.H. Garland candlestick.

