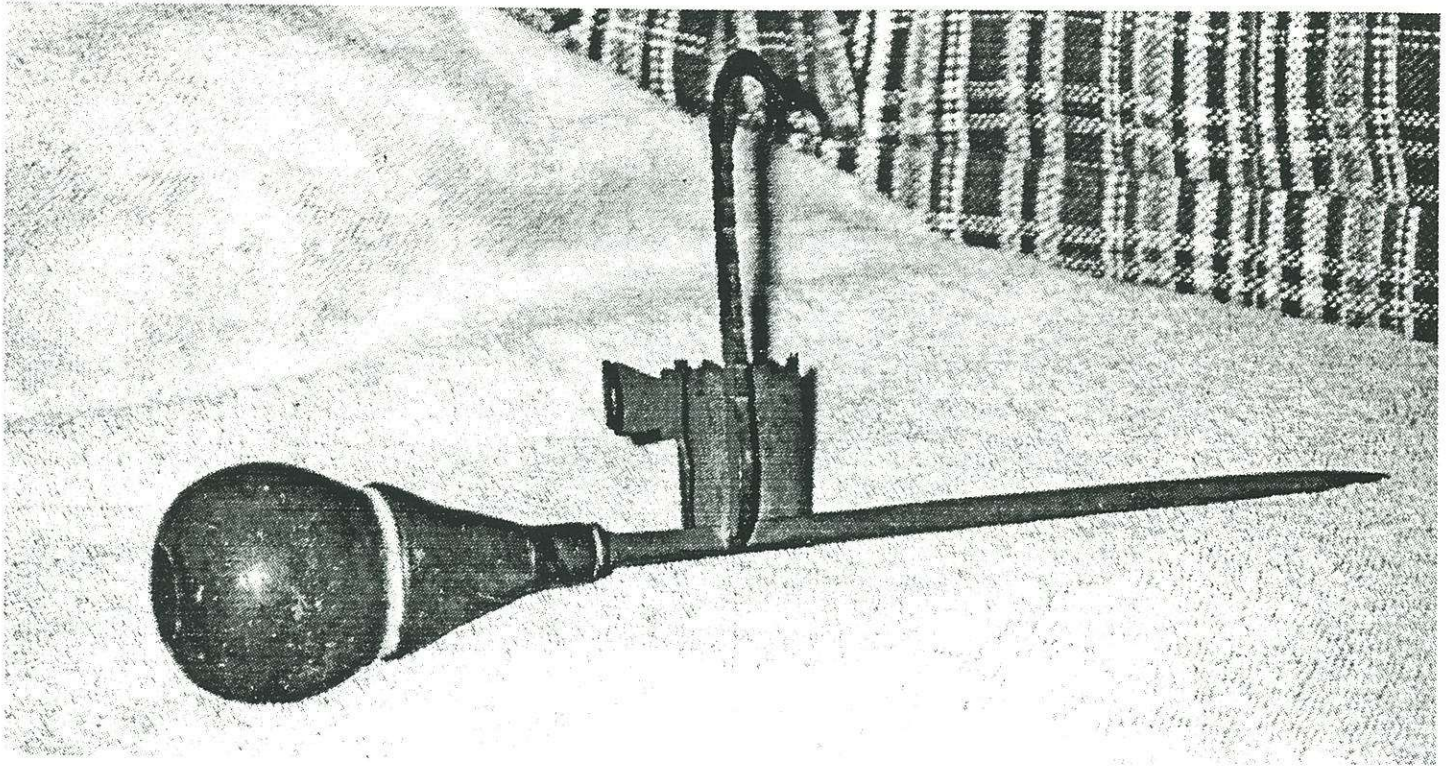


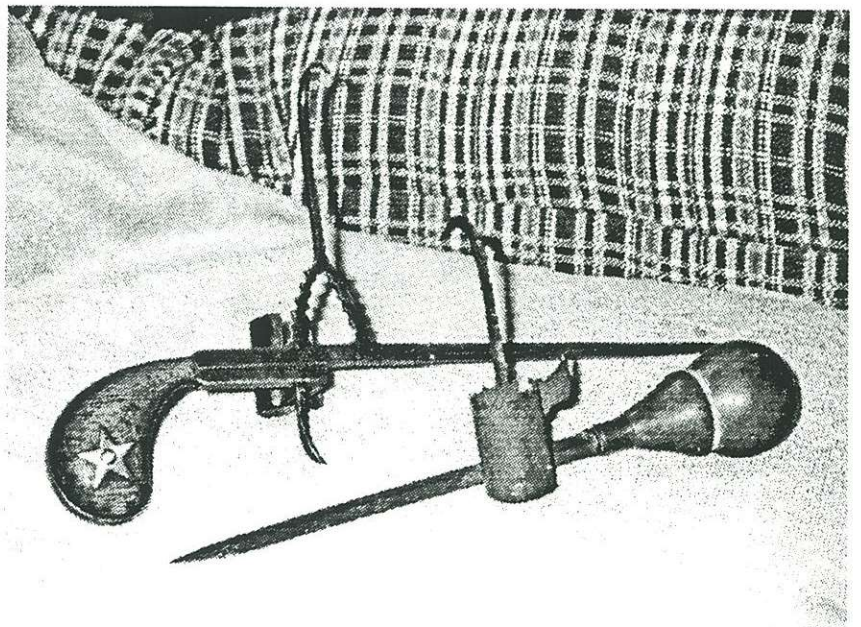
Wood-handled Candlestick

Bob Schroth



I was the lucky one this fall to get a call from a dealer friend of mine about a very unusual miner's candle holder. This dealer collects all type of old lighting and found this stick in a estate sale. No one at the sale knew any history of the stick or of any miners in the family.

The stick at first glance looks a lot like a old screw driver modified into a miners candle stick. when you look more closely you see that it was made as a miners stick right from the start. The hanging hook, is filed to look like a tree, and the tip of the hook is hammered flat and sharp, a lot like the early Betty lamps. The thumb tab is very long and has a lot of nice filing on it also. The best part is the old wood handle. The balance and the feel of the handle makes me wonder why more sticks were not constructed this way. It is a lot easier on your hand when you pound the stick into a timber.



Two wooden-handled candlesticks (Bob Schroth collection and photo.)