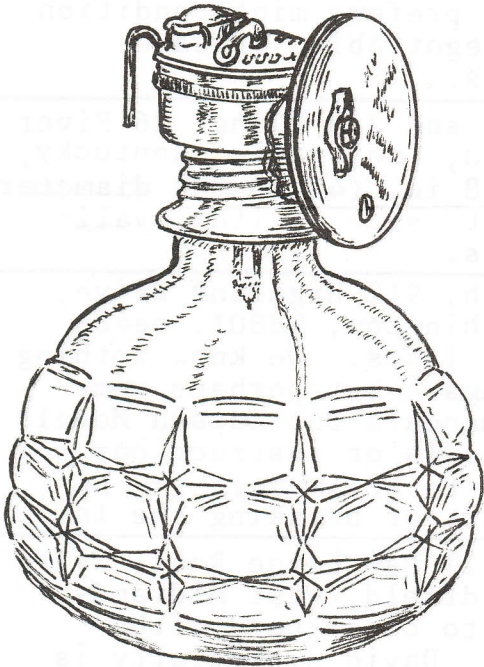


THE UNDERGROUND LAMP POST

- MINERS WERE THE FIRST ECOLOGISTS -

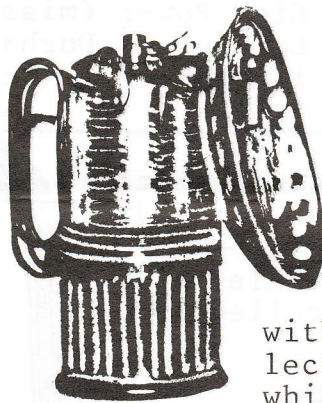


The Underground Lamp Post, devoted to old mine lamps, carbides, and candleholders. Mini-editor: Henry Pohs, 4537 Quitman St., Denver, Colorado, 80212



Glass bottom carbide lamp - Illustrated is a lamp in the possession of Arthur A. Ronat, 26 Crownview, Mt. Vernon, Ill., 62864. So far, no one has been able to help Arthur identify either the use or the manufacture of this item. The bowl is heavy, good quality glass with external screw threads to match the top which is a standard type Guy's Dropper brass water chamber. Dimensions are 7 in. (177,8 mm) overall to the top of the water filler door, 5-1/2 in. (139.7 mm) to the top of the neck of the glass bowl, and 6 in. (152.4 mm) diameter of the bowl. Anyone with helpful information should write to Arthur Ronat.

Sales and trades - Carl Denicus, RR 2, Radnor Rd., Peoria, Illinois, 61615, has extra lamps for sale or trade including Big Boy, Victor polygon feed, German RR lamps, Husson #6, Liberty, and an unmarked brass oil wick cap lamp. Carl needs a What Cheer oil wick cap lamp, uncommon carbide lamps, and parts for a Justrite Uncle Sam hand lamp including burner, reflector, water regulator, gasket, and inside parts.

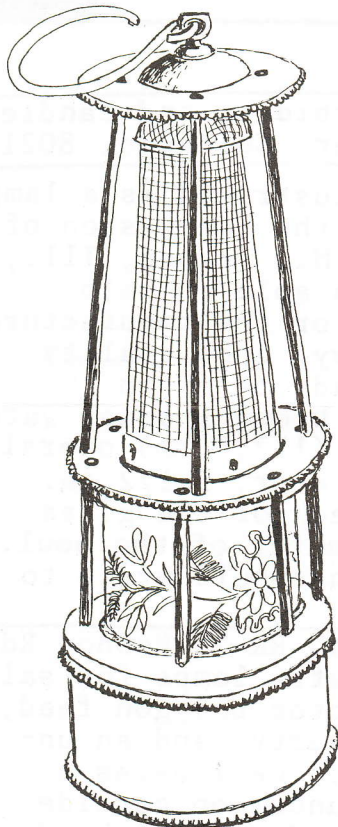


Strange reflector - James Van Fleet, 1571 Walker Ave, Union, New Jersey, 07083, 201-851-2326, thought that the Justrite lamp and reflector described by John Coons in the Spring, 1987, Lamp Post looked like a unique aberration until he came across this lamp in the collection of the National Museum of American History in Washington, D C. It is a Dew-R-Lite

with some strange modifications. The reflector is held on with two screws, one of which goes into the water tank through the normal gas tube. The other enters the tank below the point where the reflector brace was normally soldered on. There is no brace; just the burner tube and a spacer for the lower screw. The new burner tube is a massive one, soldered to the top of the water tank.

The burner tip unit is also very large; it is a right angle bend with a large knurled tip, and it screws into the burner tube. These modifications were certainly not part of the normal lamp design as the burner tube obscures most of the Dew-R-Lite lettering, but these modifications are very professional, and the lamp is apparently new. Was this a custom order? Or a prototype that never made it to the market? We never did receive any response to John Coons' inquiry.

CORNIL A GILIM



Flame safety lamp - Carl Carnein, Professor of Geology, Waynesburg College, Waynesburg, Pennsylvania, 15370, has sent this sketch of an odd safety lamp from his collection. The name CORNIL A GILIM appears on the top, and the glass cylinder is engraved with flowers and fancy work. Can anyone help develop information on this lamp?

Calendars - J. Roger Mitchell, 19 Eric Lane, Glen Riddle, Pennsylvania, 19037, writes that he is looking for three copies of the yearly Senior Conflow miner's lamp calendars. He needs Nos. 1, 2, and 3 (1982, 1983, 1984). He prefers mint condition although minor markings are negotiable. Please contact Roger with your offers.

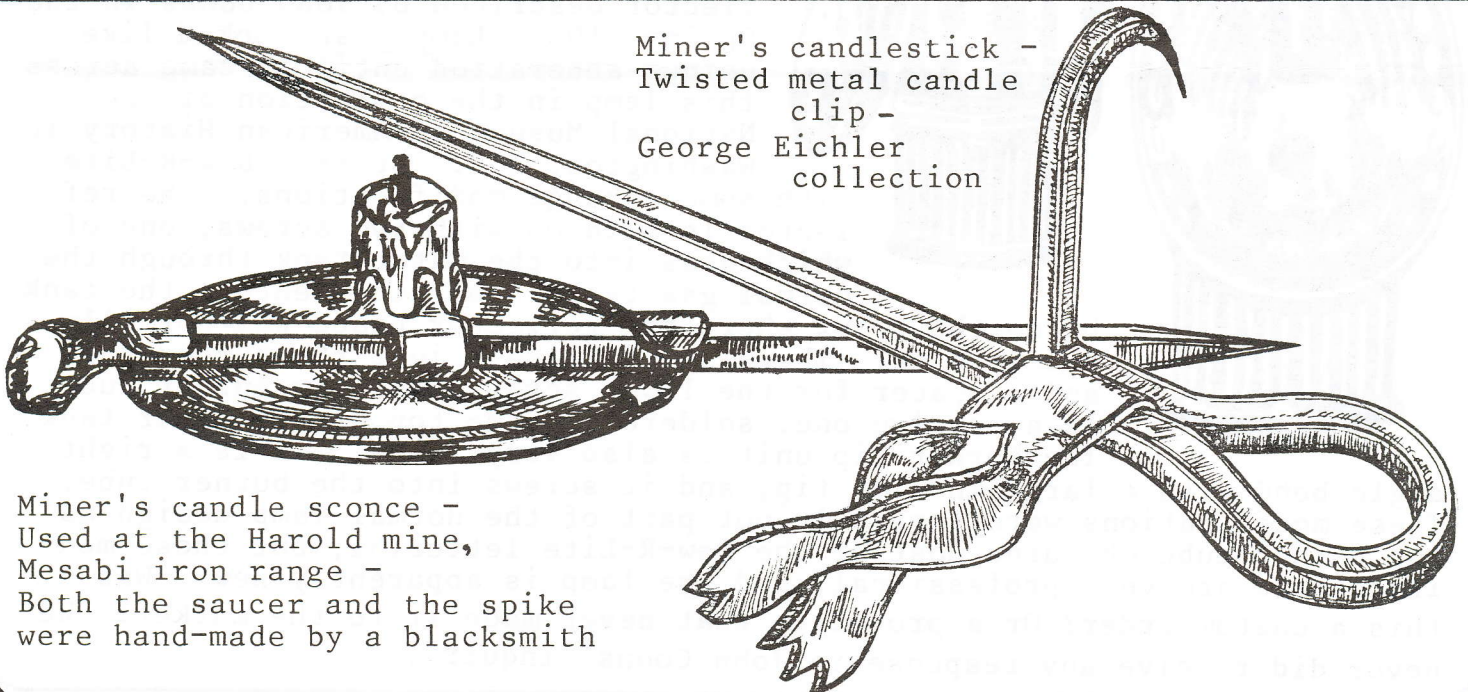
Safety lamp screen - Caroline and Jim Ewing, 26 River Hill Road, Louisville, Kentucky, 40207, need a cap screen 1-5/8 in. (41.28 mm) diameter for a Clanny lamp. Anyone with such an item available should contact the Ewings.

Edison lamps - John Baz Dresch, 912 Highland Drive, Wenatchee, Washington, 98801, needs help with his Edison electric lamps. We know nothing about 'those new fangled things,' but perhaps some reader can supply copies of manuals for Edison Models P and R4. John needs the manuals or instructions for disassembly. He doesn't want to break anything by forcing the battery cases apart or breaking the lamp.

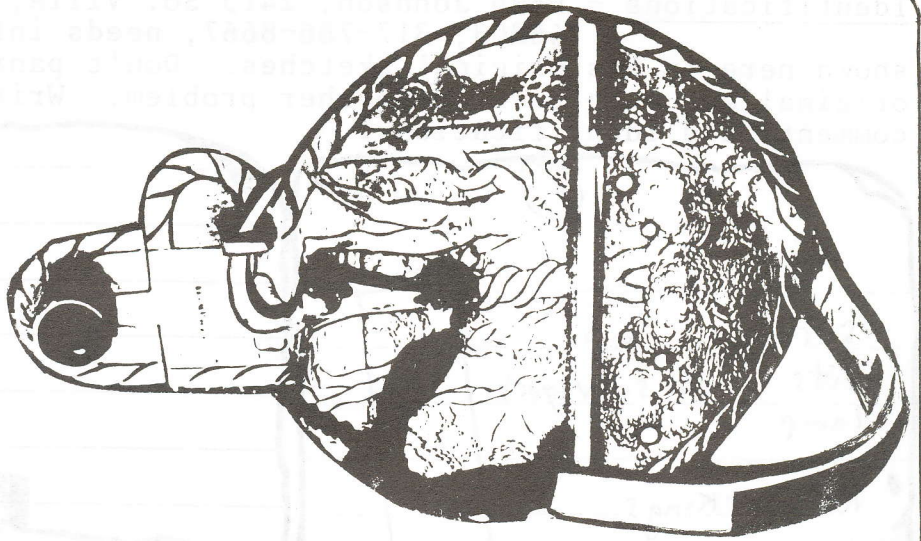
Lamp book - David S. Barrie, 21 Hawthorne Road, Wylde Green, Sutton Coldfield, West Midlands, England, B72 1ES, would like to correspond with

American collectors or any other nationality, too. David's specialty is English flame safety lamps. He would like to know how many readers would be interested in a book on that subject. He also has the following available for trade: Patterson A1; Patterson High Power (missing internal glass); Davis Derby Kirkby mk2; Davis Derby 2BA; Laidler of Durham bonneted Clanny; plus a couple of Protector lamps. While interested in acetylene, David's main collection is based on flame lamps.

Miner's candlestick -
Twisted metal candle
clip -
George Eichler
collection



Miner's candle sconce -
Used at the Harold mine,
Mesabi iron range -
Both the saucer and the spike
were hand-made by a blacksmith



Engraved silver - Tony Moon,
2763 East

Willow Wick Drive, Sandy,
Utah, writes that he found
a superb engraved silver
frog lamp in London and
enclosed the photos we have
tried to reproduce above.
He would like to find infor-
mation about it, but has not
had much luck. His German correspondent, Karsten Porezag, is sure that it
is not German. Tony's clues indicate that it is probably from Sweden. Can
anyone help identify this lamp further?

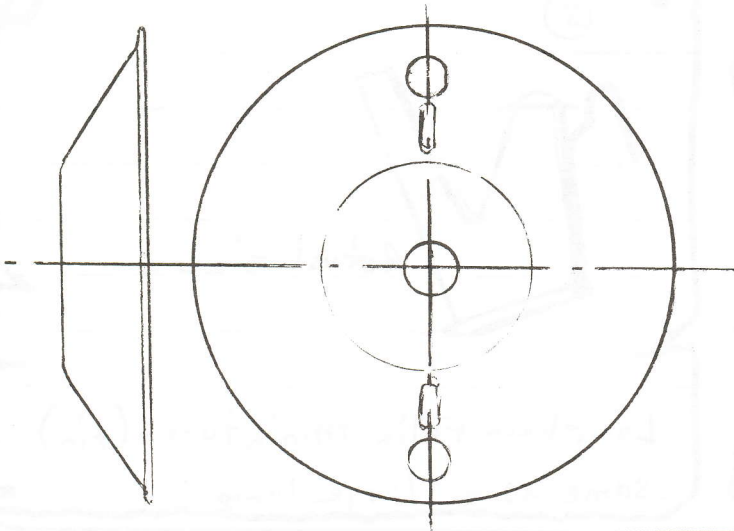


Sale and trade - James H. Ewing, 26 River Hill Road, Louisville, Kentucky,
40207, has sent a long list of items for sale or trade.

Some of the items are: Marshal folding candlestick; Guy's Dropper car-
bide tin; cast aluminum oil wick cap lamp marked "Pat Ap'ld. For"; Sun Ray
carbide cap lamp (used condition); early Baldwin hand-held, no reflector;
AutoLite carbide lamp with extended latch-on reflector; ITP Dewar carbide
lamp; 2 Stonebridge candle lanterns; carbide flasks; large copper water
cans; miner's gold scale with weights and wooden box; wooden dynamite
box; blasting cap tins; oil wick cap lamps; Hercules brass 10-cap blaster;
Davis wind gauge; Hugo Zweigle (German) carbide lantern; yellow and black
"Warning" sign. Call 502-895-7044 for more information.

Now, why did they do that dept.?

We have a 2-1/2 in. (63.5 mm) dia-
meter brass cap lamp reflector with
two lighter holes and two reflector
brace locating detents . . . all
common and standard factory quality.
No one yet has had any idea about
the reason for this configuration.
To be used properly, there would have
to be a reflector brace with two
slots to match the detents on this
reflector. But, it would seem
foolish to put two strikers on this
one reflector. If anyone has any
ideas, drop us a line.



Identifications - Dave Johnson, 2415 So. Villa, Indianapolis, Indiana, 46203, 317-786-8667, needs information on the four lamps shown here in his original sketches. Don't panic . . . number 2 in Dave's original sequence covered another problem. Write or call Dave with your comments and identifications.

①

Screw on cap fits Crown surveyor's lamp

No markings

Brass

Brass

Copper

Actual Size

④

Push in cap

Actual size

cast metal
all black textured finish

⑤

← Top

Brass

Brass

Copper

2" tall

1" diameter base

Actual Size

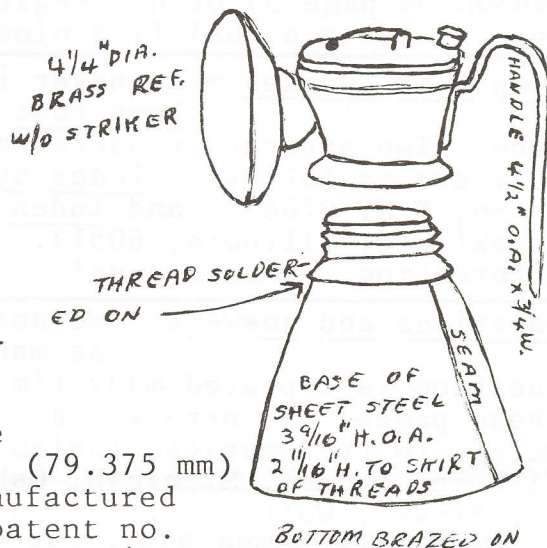
③

Actual size

Lean-back Felix Miniature (tin)
same as my large lamp

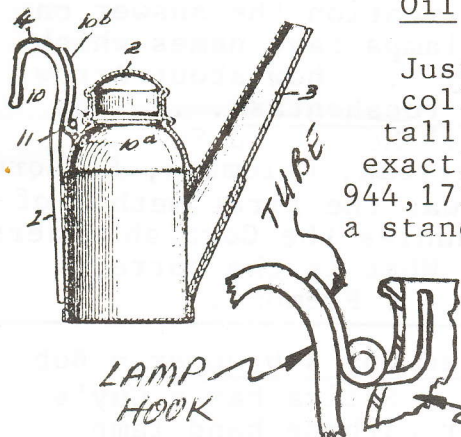
Modification - Bob Salika, 3917 Sunnyside, Brookfield, Illinois, 60513, has sent the sketch at the right which shows a modified AutoLite carbide cap lamp. It consists of a Chicago-type AutoLite water chamber (minus original hook and braces) with an enlarged 3/4 in. (19.05 mm) flat steel hand hook soldered to the back and a 4-1/4 in. (107.95 mm) brass reflector from something else. The bottom is a heavy steel conical chamber (with bottom brazed on), soldered to the male neck of a regular AutoLite base.

MODIFIED AUTO LITE LAMP



Oil wick cap lamp vent -

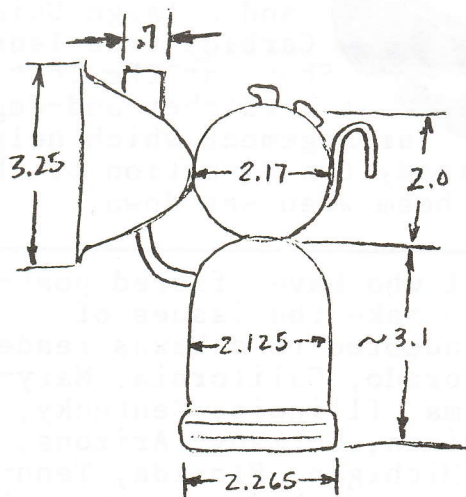
Just arrived in a private collection is a 3-1/8 in. (79.375 mm) tall oil wick cap lamp manufactured exactly as shown in U. S. patent no. 944,171 of December 21, 1909. It is a standard tin lamp with brass collar and dome. The main feature is a 1/16 in. (1.59 mm) diameter tube that is soldered between the hook and the lamp body. This tube extends through the lamp side and runs up as far as the bottom of the dome. It is supposed to act as a vent trap.



European collector - A kind letter from Werner Horning, Georg-Speyer-Str 77, 6 Frankfurt, West Germany, invites lamp collectors to correspond with him and to visit if ever possible. He is looking for American Davy lamps or oil wick lamps of very ancient times.

Little Giant - Your mini-editor still is in need of a water door and a water valve for the Justrite Little Giant carbide hand lamp.

Cap tins - Andy Martin, P. O. Box 94, Piscataway, N J, 08855, reminds us that he is interested in cap tins, candle boxes, and powder boxes. His cap tin catalog (66 pages) is still available for \$7.00.



All dimensions in inches.
 Water lever is 3/16" dia.
 Water door I.D. 3/8" (threaded)
 " " O.D. 5/8"

Hook was definitely added later.

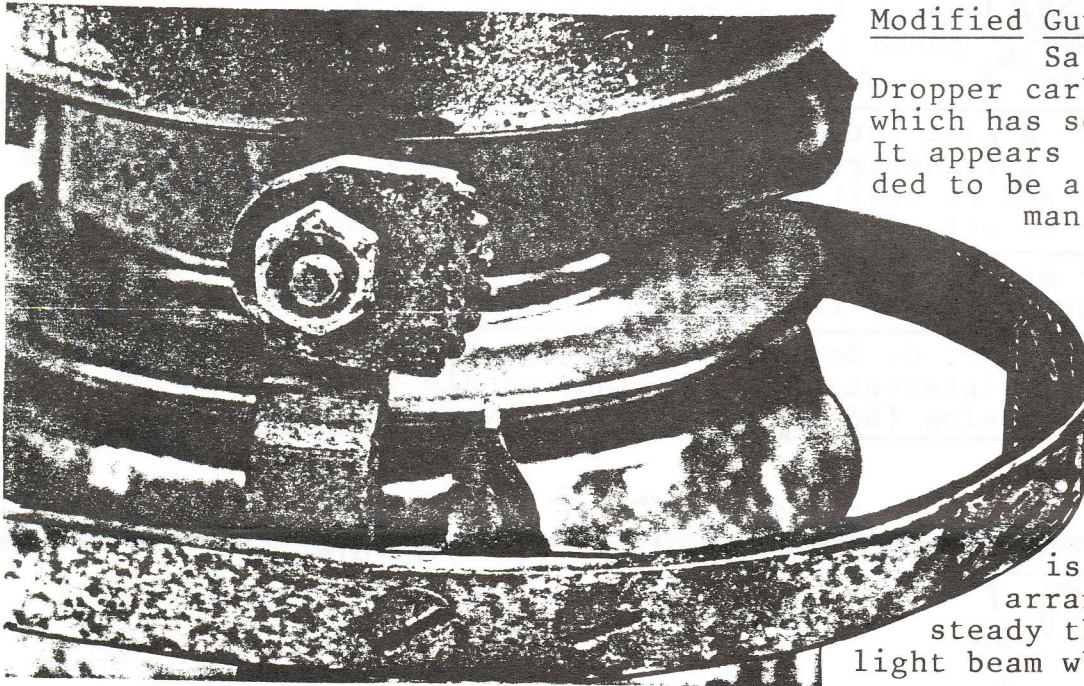


MAGIC
 GAS LAMP CO
 82 LAKE ST.
 CHICAGO, U.S.A.
 PAT. PEN'D

Magic Gas Lamp - Bill Spence, 2381 Homewood Drive, San Jose, California, 95128, 408-247-4816, has provided a dimensional sketch (shown on page 5) of his Magic Gas Lamp Co. carbide lamp. We may never know if it is a qualified miner's lamp.

Lamp Post indexes - We never in our wildest nightmares thought that the Lamp Post would ever merit indexing, but it has been done. Two separate readers have sent indexes, each one differently based. They are as follows: Index by Subject from Jim Van Fleet, 1571 Walker Ave., Union, N J, 07083; and Index by Issue from Bob Salika, 3917 Sunnyside, Brookfield, Illinois, 60513. Readers should contact Jim or Bob for more information. Thanks guys!

Questions and answers - We answer many questions for our correspondents, as many as several dozen each month. When a certain question is repeated many times, we probably should mention the answer on these pages. So here are a few. 1. How many cap lamps have names which relate to the American Indian? A. There may be many. . . how about Arrow, Elkhorn, Maumee, Michigan, Oshkosh, Pathfinder, and Pocahontas . . . for the Braves, Wolf . . . for the Squaws, Red Star, Full Moon, and Sun Ray. 2. Were mine names put on lamps? A. Yes, Acme, American, Colombia, Elkhorn, Full Moon, Imperial, Victor for starters. 3. What was the first method of cap illumination used in mining? A. Probably the candles the Cornish miners stuck to their caps with a wad of sticky clay. 4. What is the correct spelling for the Fremont candlestick? That's it . . . Fremont.



Modified Guy's Dropper - Bob Salika has a Guy's Dropper carbide hand lamp which has several modifications. It appears to have been intended to be a railroad signalman's lamp. Additions include a carrying handle across the top, a taller bale over the handle, a wide diameter frame around the bottom, and a large Union Carbide-type lens. Shown at the left is a ratchet-and-dog arrangement which helps steady the direction of the light beam when set down.

Postage and costs - Once again our thanks go to all who have offered post-funds, stamps, and materials to make the issues of the Lamp Post possible. This issue is specially indebted to a Texas reader for stamps. Other offerings have arrived from Colorado, California, Maryland, Indiana, Nebraska, Oklahoma, Missouri, Alabama, Illinois, Kentucky, Pennsylvania, Connecticut, Oregon, Louisiana, Virginia, Germany, Arizona, France, New Jersey, Massachusetts, West Virginia, Michigan, Florida, Tennessee, Ireland, Michigan, Canada, and North Carolina. We had hoped to celebrate employment by the time this issue was ready, but our part-time job has fallen to, of all things, a merger (our third in the past 10 years). Through the goodness of our readers the Lamp Post is almost self-supporting. We will continue to develop further economies. Sincere thanks to all.