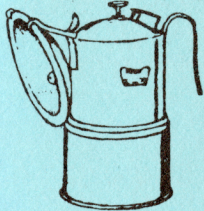


*Nearly* the  Complete Bottom-Guide  
for  
Carbide Cap Lamps

SECOND EDITION



The <sup>nearly</sup> Complete  
Bottom-Guide  
for Carbide Cap Lamps

Second Edition

by Wendell E. Wilson

First Edition ©1981, Wendell E. Wilson  
Second Edition ©1982, Wendell E. Wilson

Additional copies of this publication  
may be obtained from the author,  
in care of Mineralogical Record Inc.  
P.O. Box 35565, Tucson, Arizona 85740.

Photo courtesy of Julian Blakely.

# INTRODUCTION

Pictured here are 78 lamp bottoms or carbide chambers for American-made carbide cap lamps. Because there has never been a detailed reference on carbide cap lamps, it has often been difficult to identify spare bottoms, to correctly match tops and bottoms, and to recognize mismatches. Perhaps these drawings will help.

This collection of drawings is not exhaustive. . .there are undoubtedly many other varieties out there which I have not seen. Furthermore, some drawings were made from photos of marginal quality, or from the drawings of other collectors, and so a few errors are likely. The reader should also bear in mind that these are sketches, not rigorously drafted engineering-quality drawings.

Every known brand of lamp is represented here by at least one drawing, except the following: belt-generator models (Columbia-C, Lunkenheimer, Justrite, Brilliant Searchlight), models without normal bottoms (S.E. Simmons, Standard), and models I have never actually seen (Pocahontas, Hardsocg, What Cheer). I would appreciate receiving any information on lamp bottoms.

The drawings show a side and a bottom view. A question mark on the bottom indicates that I have been unable to examine one and do not know if there are markings on the bottom face.

A number of people were kind enough to examine a preliminary draft of this booklet and to provide much additional information. I would particularly like to thank John Leahy, Henry Pohs, Chuck Young, Rich Finch and Ralph Blankenbecler.

# CLEANING

I would like to take this opportunity to say a few things about the practice of cleaning carbide cap lamps. Some collectors like to leave their lamps uncleaned and heavily tarnished. But I think the majority prefer clean lamps, restored as much to their like-new condition as possible, like antique automobiles. I have yet to see a properly cleaned lamp lose any of its value. It will look better as a display piece (though less like a "relic"), and will be more easily sold or traded. However, improper cleaning can do irreversible harm. If you can't or won't take the time to clean a lamp right, please don't clean it at all. . . its next owner will thank you.

The key to proper cleaning is to remove the tarnish without disturbing the surface underneath. Scraping with a blade or brushing with a stiff wire brush hopelessly ruins the surface underneath. Obviously a chemical rather than a physical approach is best, and also a lot less work. Very mild abrasives can be used in stubborn cases, and a polishing agent can bring up the luster a little when all cleaning is completed. Let's take these one at a time:

## ACIDS and BASES

Acids and bases are both corrosive and will remove tarnish. Acids are best for dissolving the lime deposits and heavy black coatings on the insides of lamps, but should not be used on the outside of brass lamps because they tend to leave a pink copper residue. Bases, for some reason, are less likely to leave a copper coating. The copper can be scrubbed off with some difficulty because it is only a very thin layer, but one might as well use a base instead.

The best base compound for cleaning brass lamps is **Brass-O**, which contains anhydrous ammonia. Household ammonia (hydrous) works too, and just about as well. A container big enough to hold the lamps and its parts is filled with **Brass-O**, covered, and left to soak for from 1 to 2 hours to overnight. (The container should be covered or sealed somehow to prevent evaporation of the ammonia.) When the lamp is removed, the tarnish can be gently knocked off with a soft toothbrush.

The disadvantage of **Brass-O** is its cost, in view of its limited life. Any acid or base will become

neutralized and lose its effectiveness after a certain amount of use. However, it does contain an excellent polishing ingredient as well (diatomaceous earth).

About the only other readily available base is lye (sodium hydroxide), which may be purchased as crystals (household lye, **Drain-O**) or as spray-on oven cleaner (**Easy-Off**). However, lye is very dangerous to skin and eyes, and I prefer to avoid it.

Among the acids, my favorite is **Lime A-Way** (phosphoric acid) because it is cheapest in large quantity. However, Naval Jelly (phosphoric too), Tarn-X (acidified thiourea), vinegar (acetic acid) and ordinary hydrochloric acid can be used as well. Nickel-plated lamps clean well in acid, though the worn spots may turn pink. Chrome or nickel-plated reflectors, too, are best cleaned in acid.

## ABRASIVES

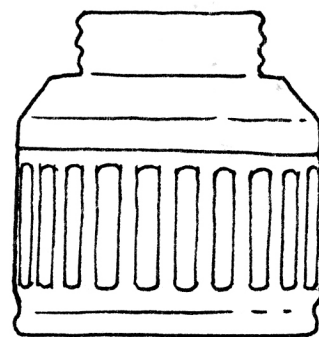
In difficult cases one may resort to abrasive bathroom cleansers such as **Ajax** or **Comet**. The gentlest and safest method of application is to rub the cleanser over the tarnish with your thumb, though this is tough on the thumb after a while. The use of steel wool is drastic and should be reserved for use on the **inside** of lamps only.

## POLISHING

For some collectors, the dull luster obtained after soaking in **Brass-O** or rubbing with cleanser will do just fine. However, the lamp was brighter when it was new, and most collectors like a bit more shine. The best agent for this is again **Brass-O**. The depth of polish is optional, depending upon how hard one rubs. The oily **Brass-O** can then be quickly removed from lamp and hands by a quick spray of **Dow Bathroom Cleaner**.

## SOLVENTS

Solvents have no effect on tarnish, but some lamps may still retain some of their original lacquer coating which was applied to prevent tarnish. The lacquer is unsightly in patches and can be removed with paint remover, as can paint or other markings applied by the miner. This should be done before cleaning in **Brass-O**. Nail-polish remover (acetone) will work just as well, and is not so painful on the skin.



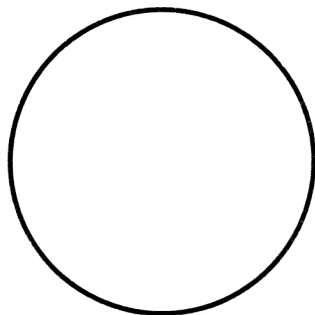
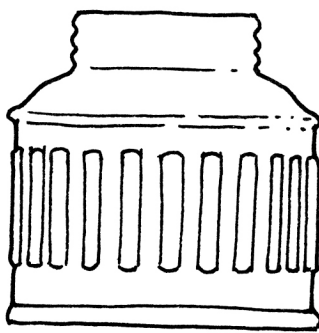
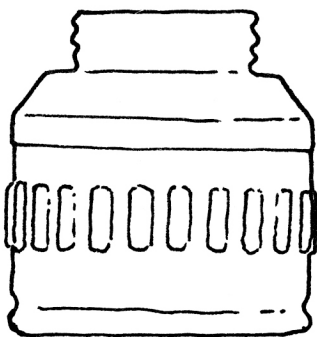
FULTON



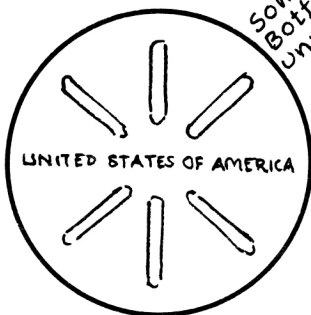
IMPERIAL



X-RAY



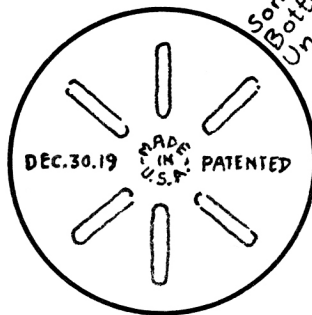
X-RAY



*Some  
Bottoms  
Unmarked*

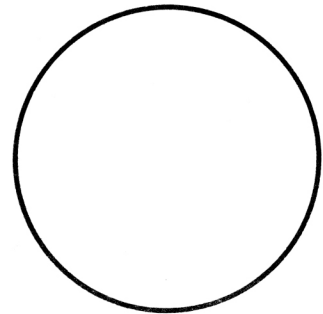
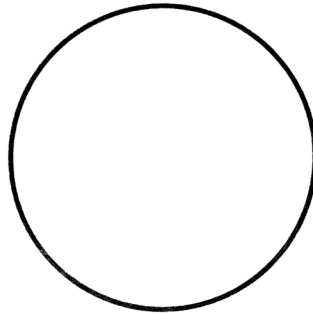
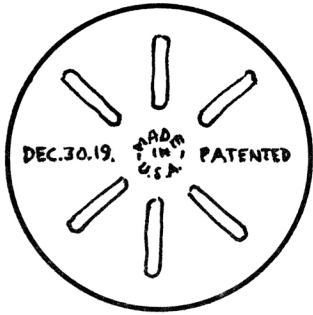
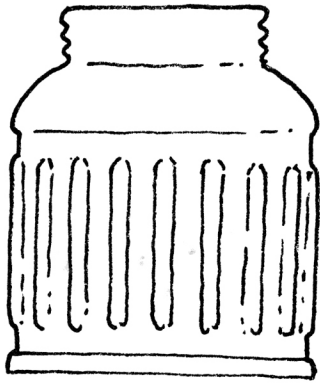
JUSTRITE  
(and)  
VICTOR

*← later  
earlier →*



*Some  
Bottoms  
Unmarked*

JUSTRITE  
(and)  
VICTOR

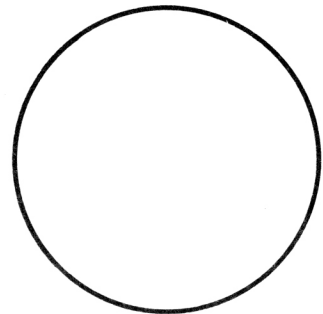
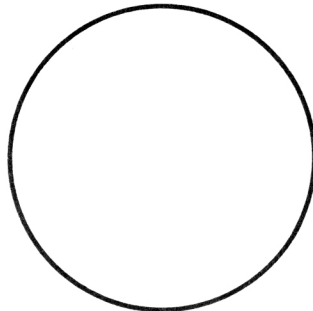
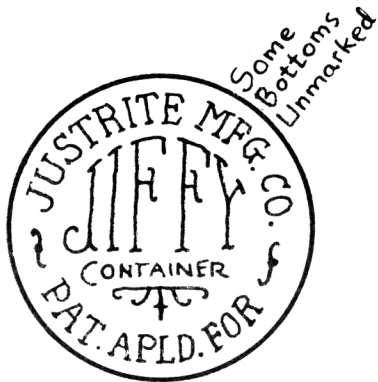
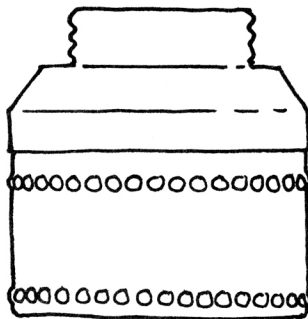
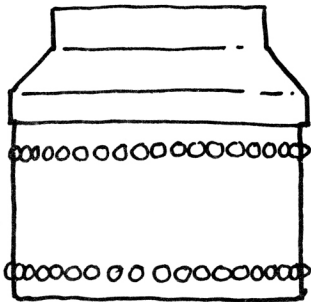


JUSTRITE  
(horizontal  
1/2-shift lamp)

ANTON  
CUBIC TOP  
(or only a Justrite?)

JUSTRITE  
(horizontal  
1/2-shift lamp)

bayonet mount  
(called a  
"helix lock")



JUSTRITE  
(horizontal)

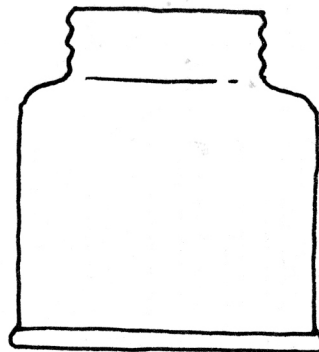
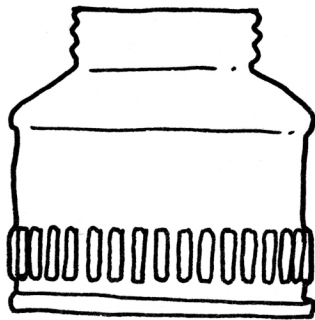
JUSTRITE  
(horizontal)  
(early)

JUSTRITE  
(horizontal)  
(very early)

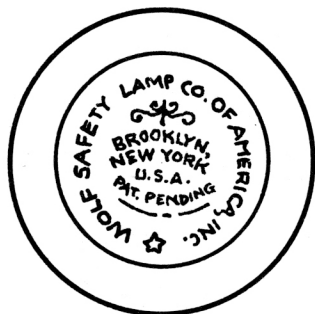




height varies



EVER-READY

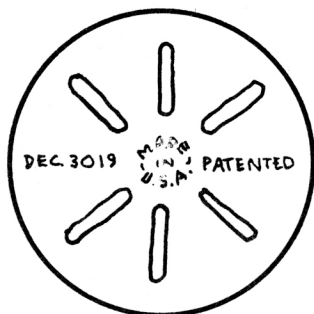
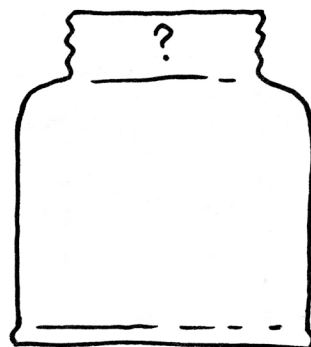
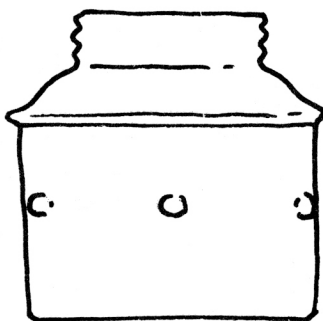


WOLF

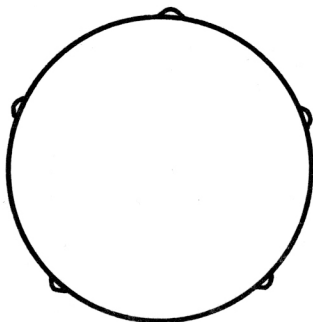


PATHFINDER

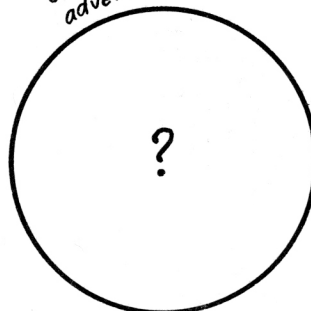
*Some Bottoms Unmarked*



DEFENDER  
(and)  
Defender-style  
X-RAY

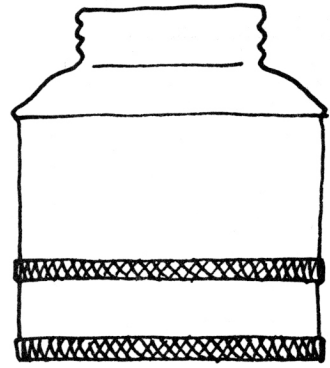
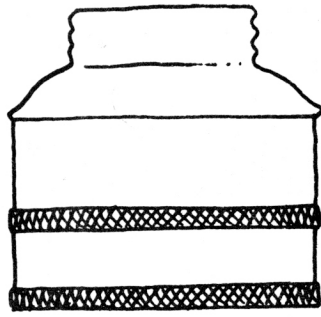
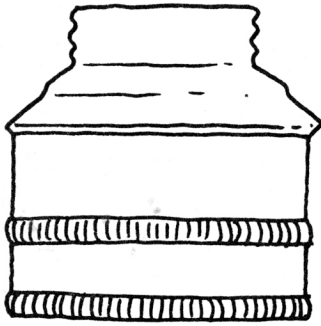


earliest  
GUYS DROPPER



*(Known only from an advertisement)*

UNION  
CARBIDE  
LAMP



early  
GUY'S DROPPER

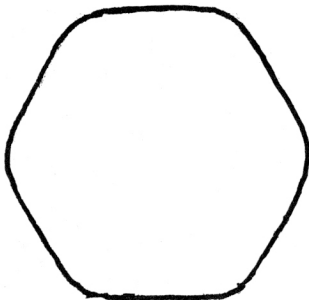
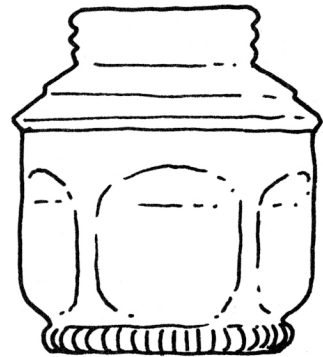
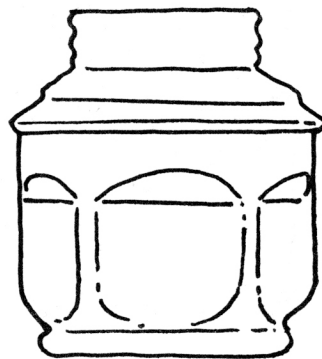
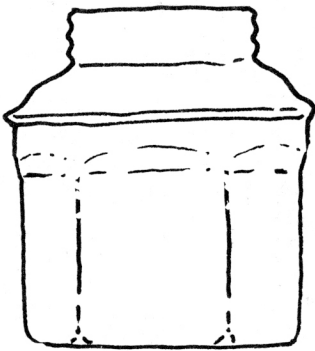


early  
GUY'S DROPPER



GUY'S DROPPER  
"Tall Boy"  
(and) SQUARELITE

Some  
Bottoms  
Unmarked



GUY'S  
DROPPER  
(and Squarelite?)



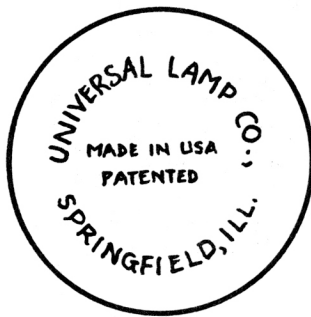
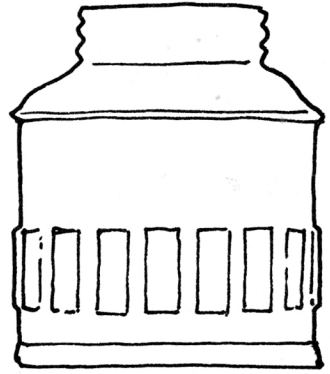
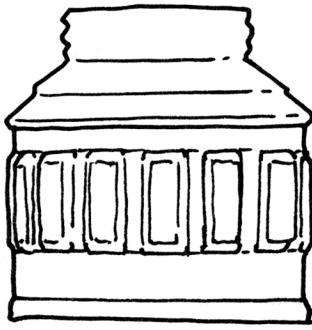
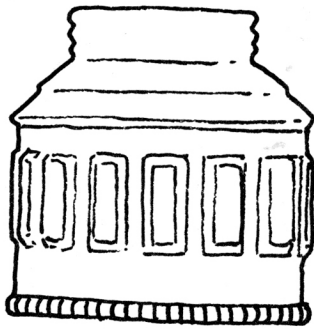
GUY'S  
DROPPER



Some  
Stamped  
like this



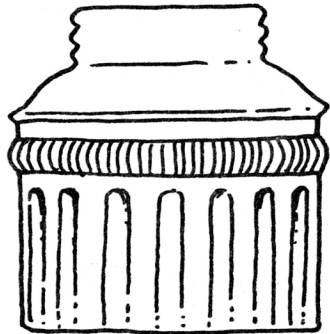
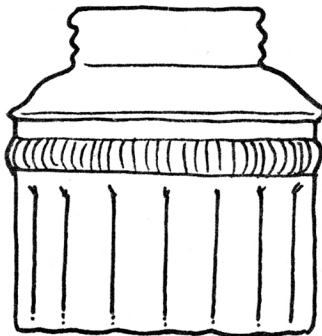
GUY'S  
DROPPER



GUY'S DROPPER

GUY'S DROPPER

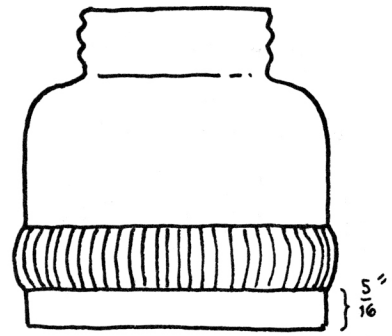
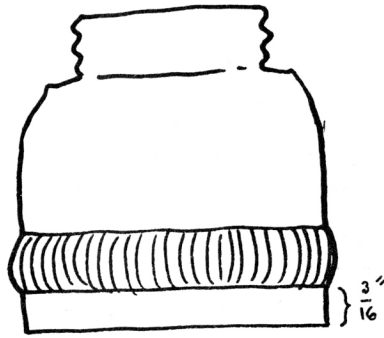
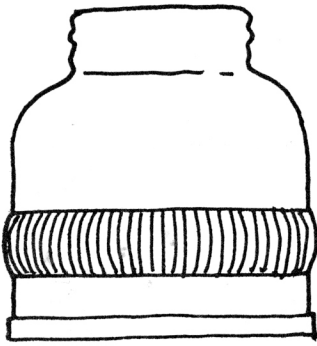
GUY'S DROPPER "Tall Boy"



GUY'S DROPPER and SCHNEIDER'S LAMP (wrong bottom?)

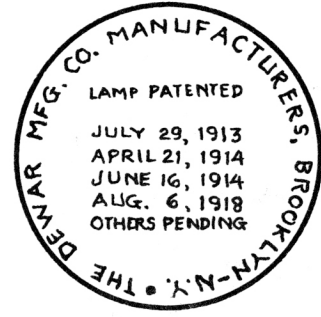
GUY'S DROPPER

GUY'S DROPPER



*Some Bottoms Unmarked*

*Some Bottoms Unmarked*

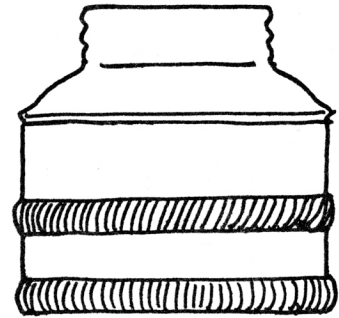
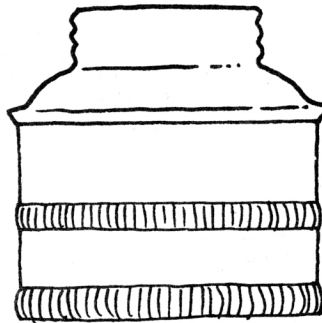
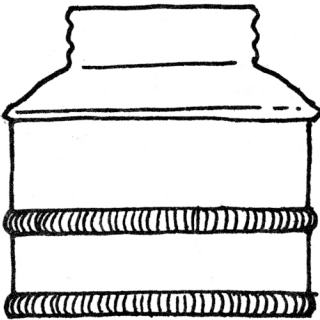


Note  
March  
Pat. date  
missing

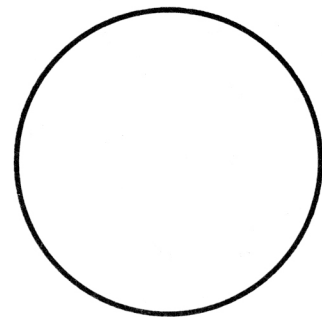
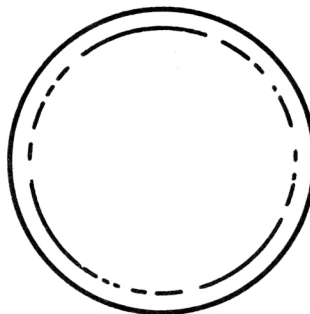
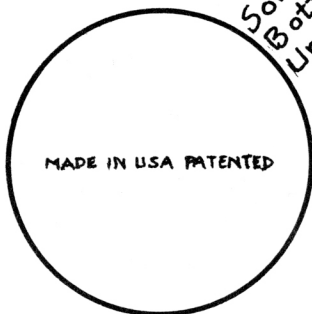
JOHN SIMMONS

SUN-RAY

ITP



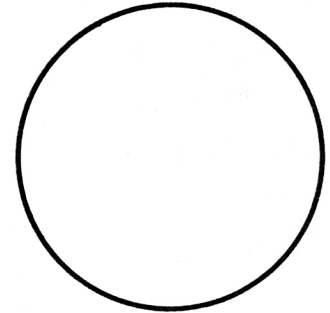
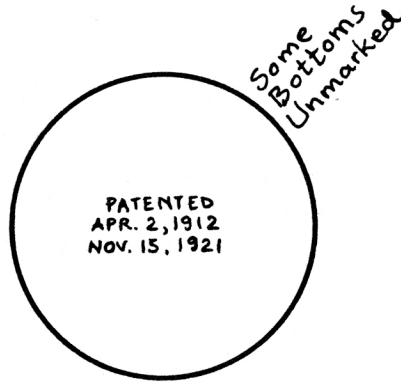
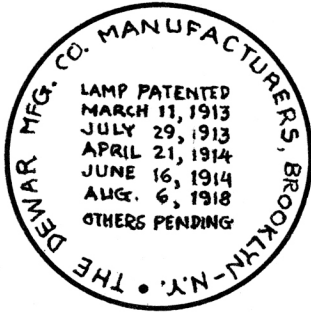
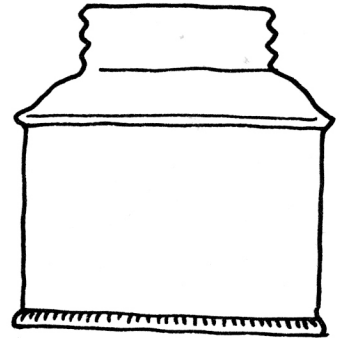
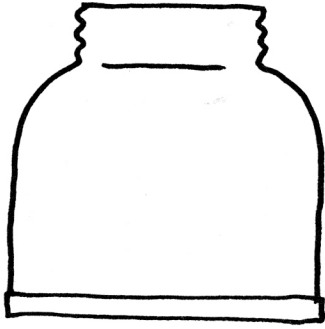
*Some Bottoms Unmarked*



ARROW  
(and)  
AUTO-LITE

early  
AUTO-LITE

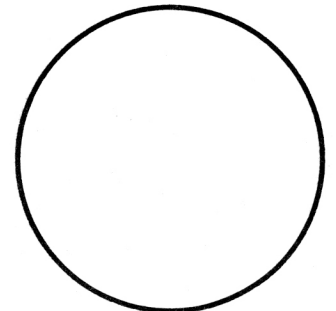
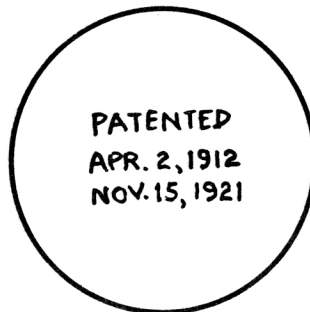
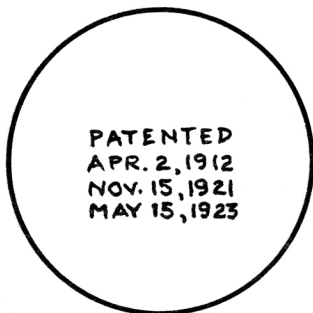
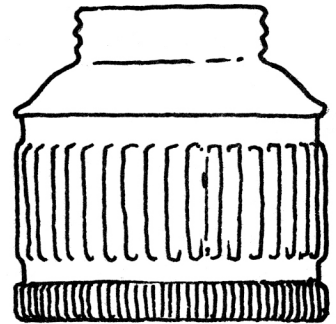
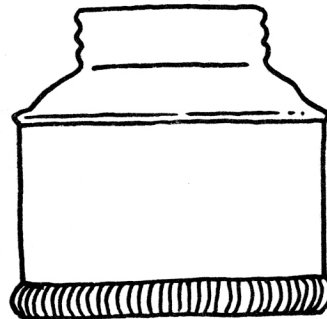
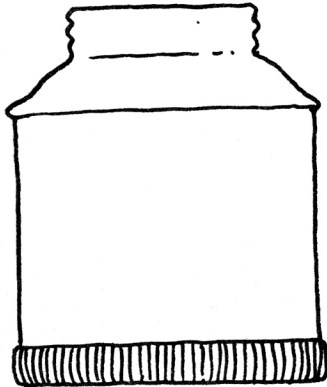
GRIER BROS.  
(horizontal)



I TP  
(Float Feed)

GRIER BROS.

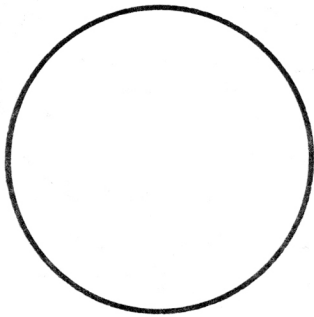
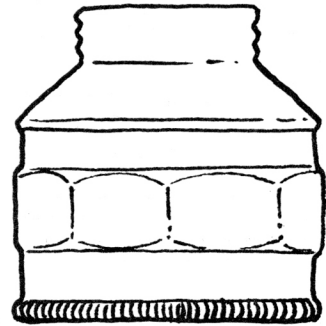
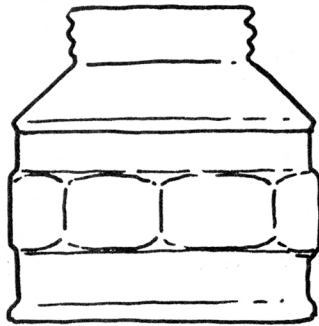
GRIER BROS.



GEM and GEE-BEE  
hand-cap lamps

GRIER BROS.  
horizontal  
(and Gee-Bee?)

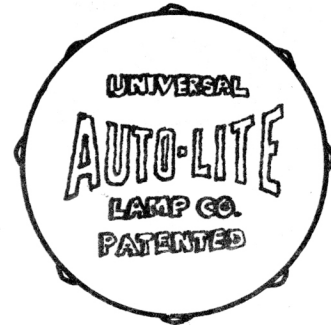
GEM



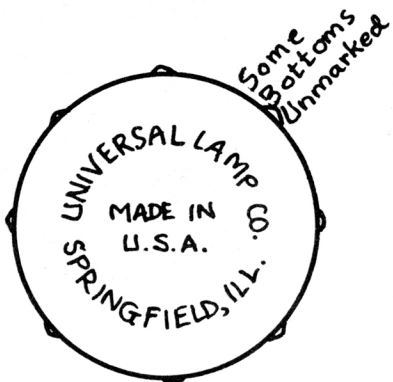
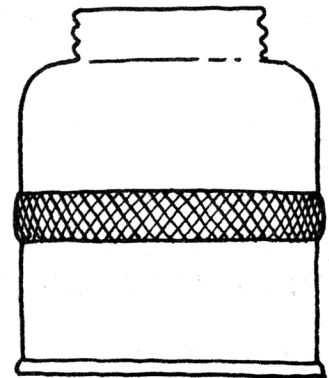
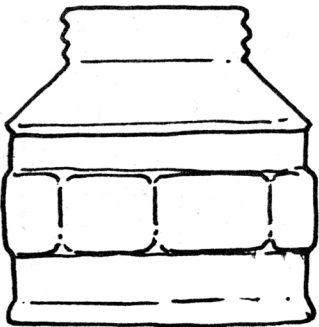
early  
AUTO-LITE



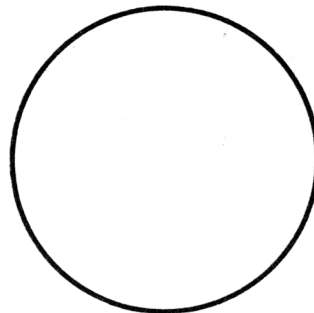
AUTO-LITE



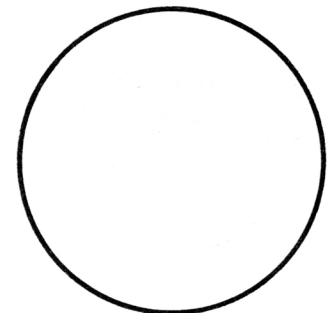
AUTO-LITE



AUTO-LITE



?



?



DRYLITE

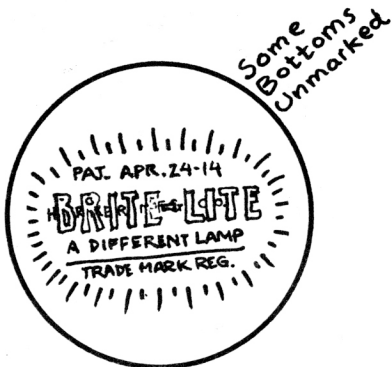
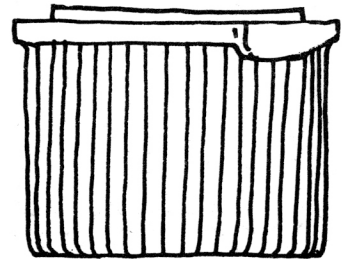
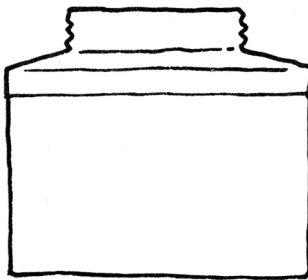
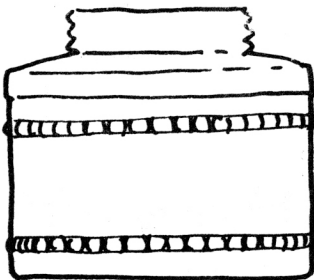


HANSEN  
(and)  
FORCE FEED

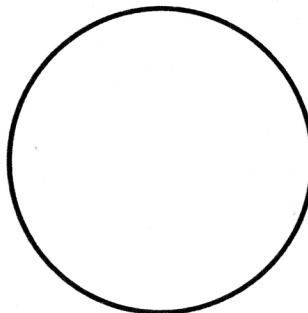


SHANKLIN METAL  
PRODUCTS CO.

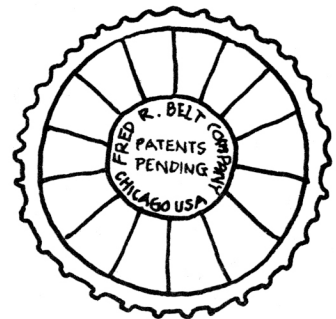
(bayonet mount)



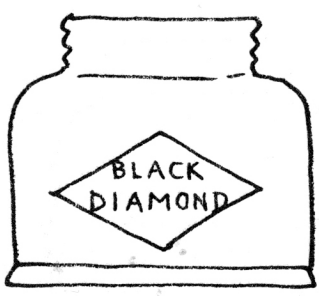
BRITE-LITE  
(Harker Mfg. Co.)



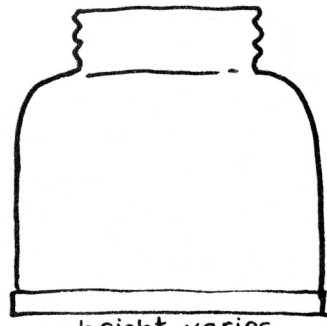
BRITE-LITE  
(Hoppe Mfg. Co.)



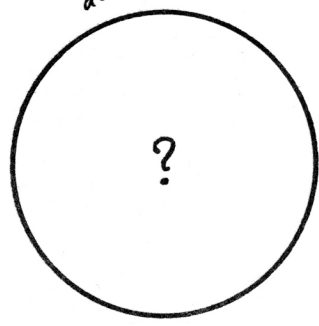
LU-MI-NUM  
(threaded model  
also known)



*(Known only from an advertisement)*



height varies

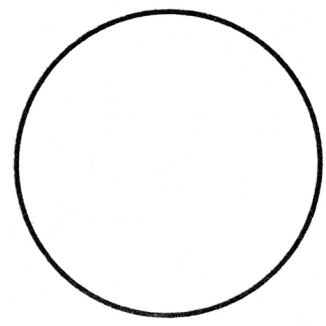


BLACK DIAMOND

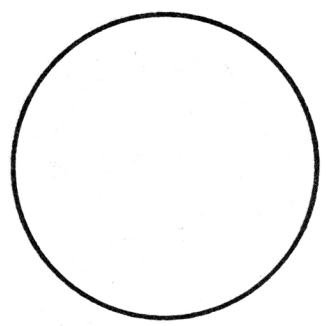
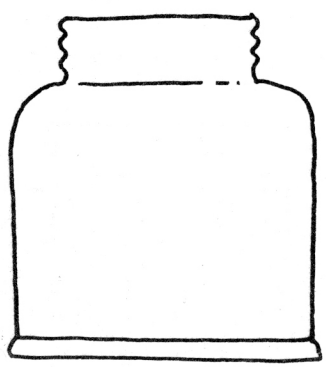


*some bottoms unmarked*

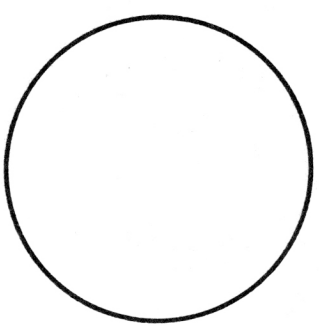
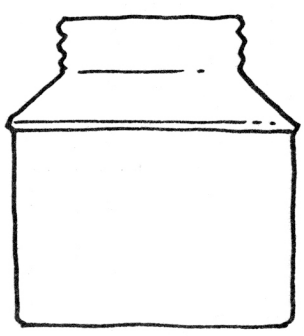
BALDWIN (and) FUNK BROS.



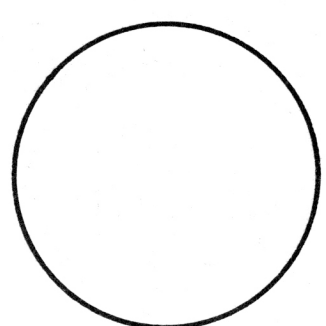
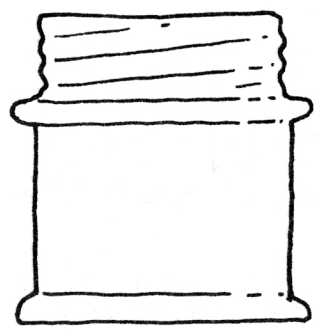
Early VICTOR (non-Justrite)



"Anthracite"

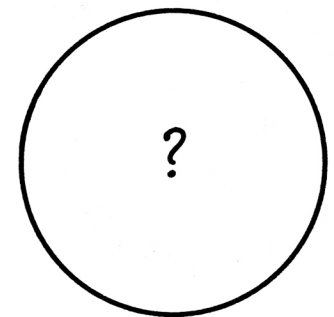
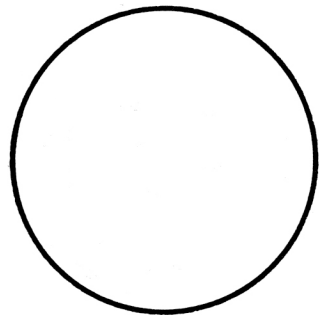
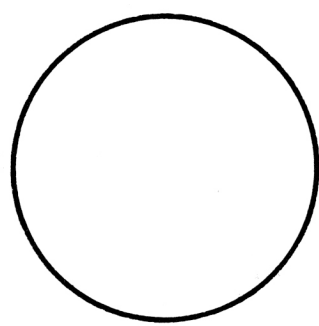
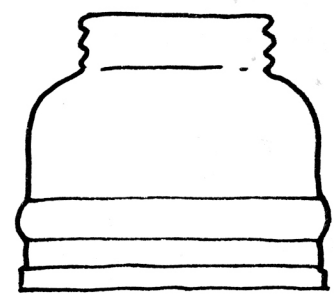
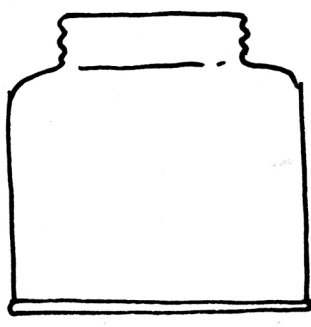


S & S



ZAR

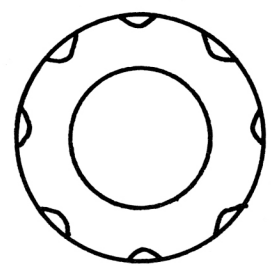
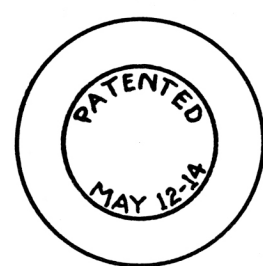
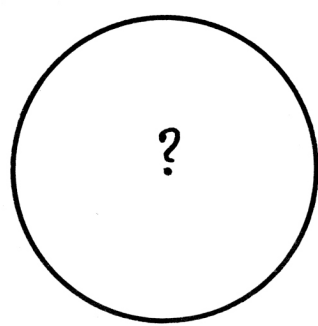
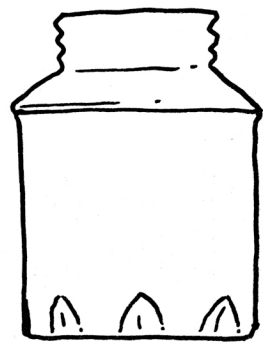
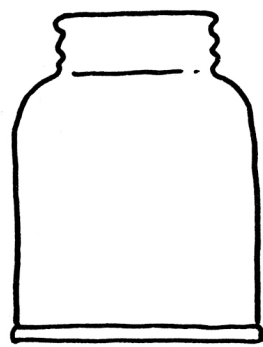




ABERCROMBIE  
& FITCH

SCRANTO  
(and)  
SCRANTON?

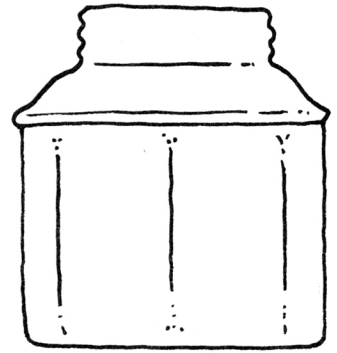
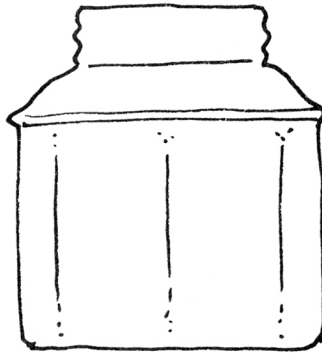
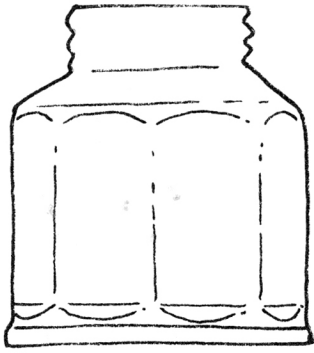
AMERICAN



NI-BA

Maumee  
DUPLEX

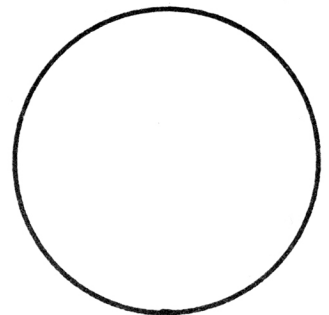
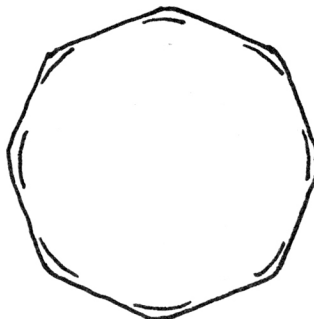
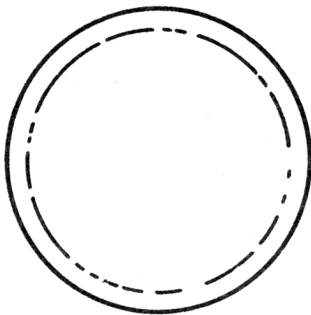
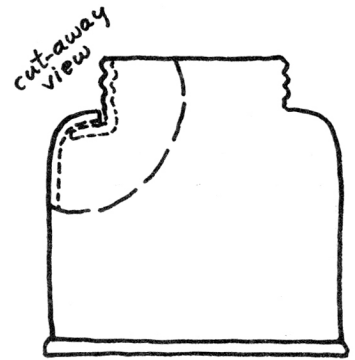
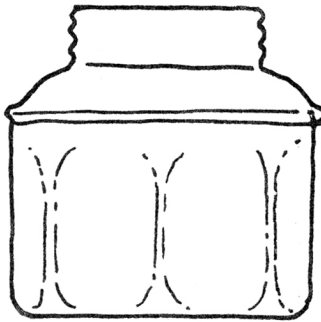
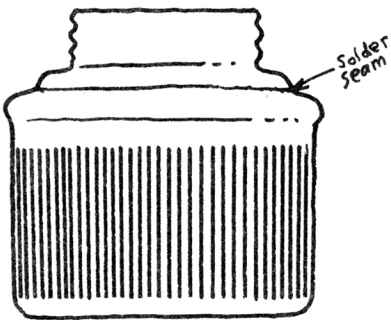
unnamed  
DUPLEX



BUDDY  
(and)  
ELKHORN

BUDDY  
(and)  
ELKHORN

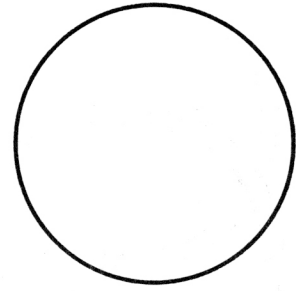
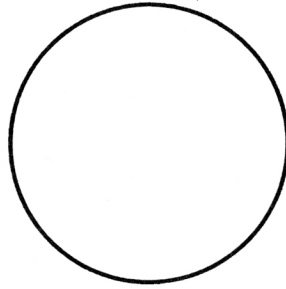
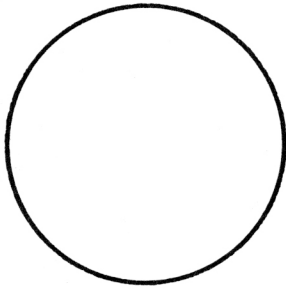
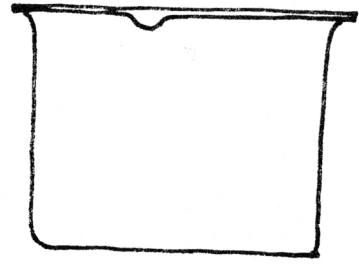
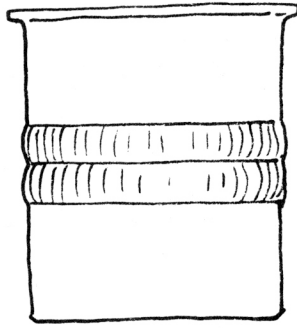
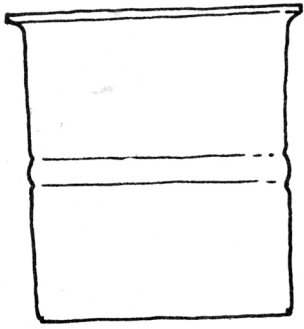
BUDDY  
(and)  
ELKHORN



SPRINGFIELD  
(early)

SPRINGFIELD  
(later)

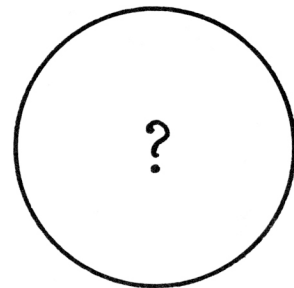
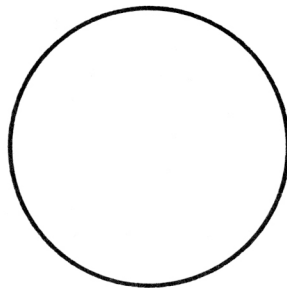
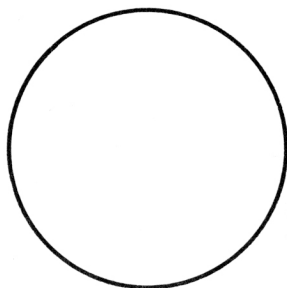
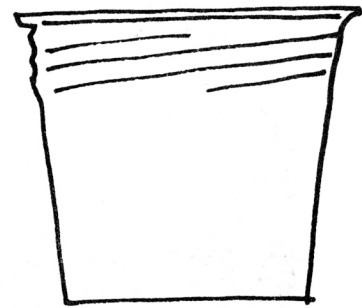
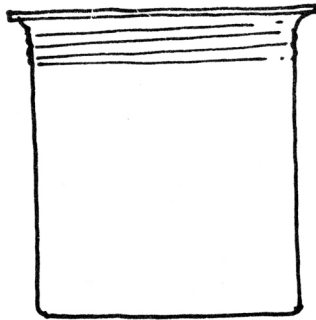
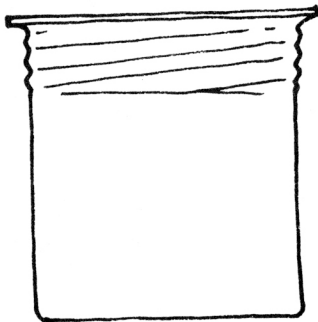
?



"ANTHRACITE"

"ANTHRACITE"

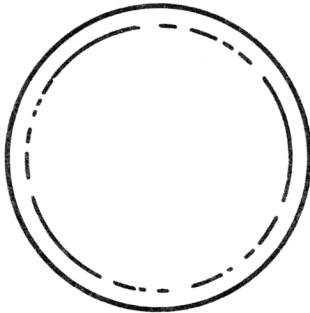
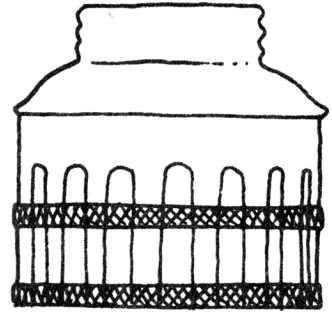
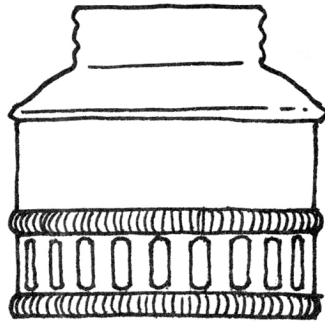
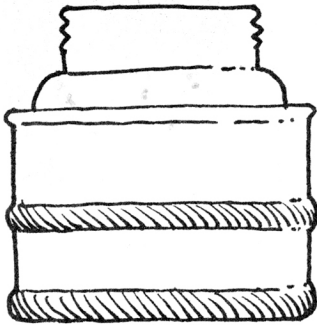
SURE-LIGHT



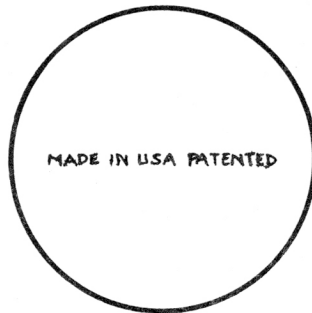
ANTON  
(cylindrical)

MAPLE CITY  
(and)  
RED STAR

MILBURN



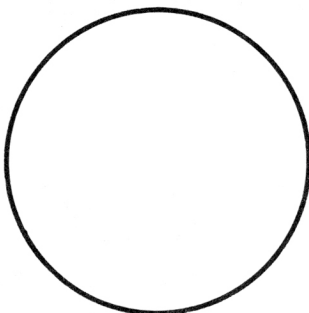
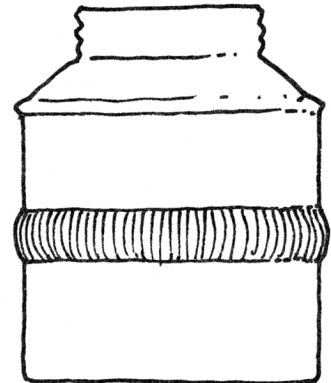
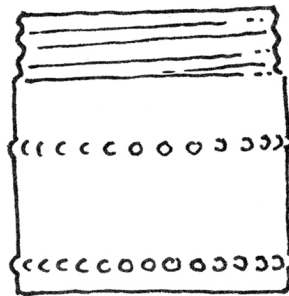
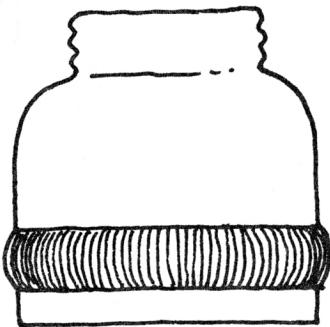
DAYLIGHT  
(American-made)



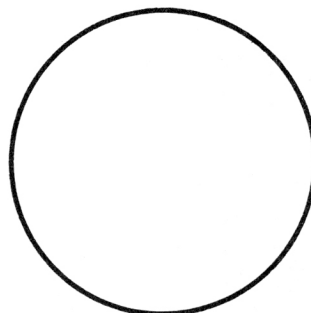
AUTO-LITE



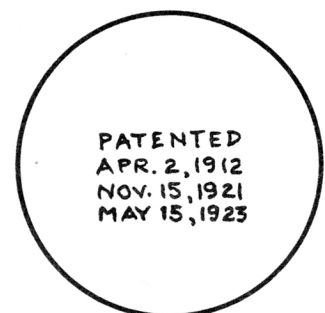
GUY'S DROPPER



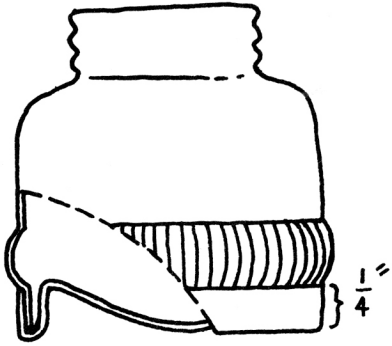
JOHN SIMMONS  
(PIONEER)



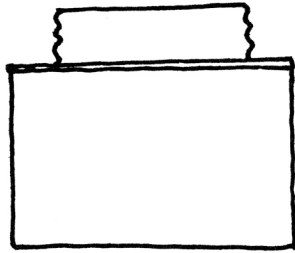
Justrite's  
THE BUDDY



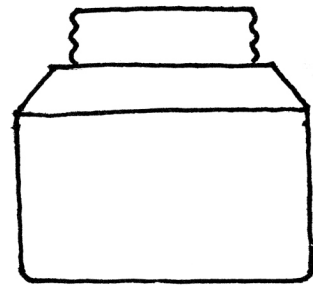
GRIER BROTHERS  
superintendent's  
lamp



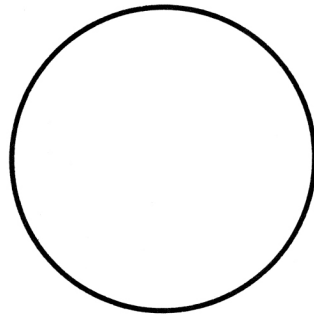
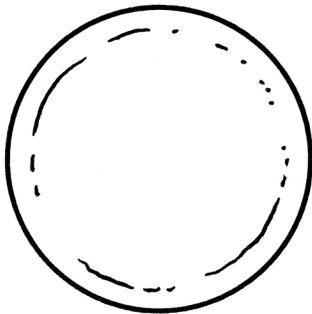
JOHN SIMMONS  
(PIONEER)



OSHKOSH

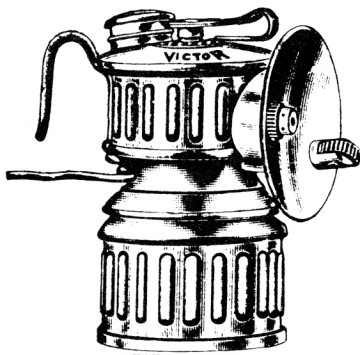


THE SNELL LAMP



Trade **"VICTOR"** Mark  
**MINER'S CAP LAMPS**  
Detachable Reflector and Brace  
Lighter Attachment.

*Justrite Catalog No. 5*



PAT. APP FOR

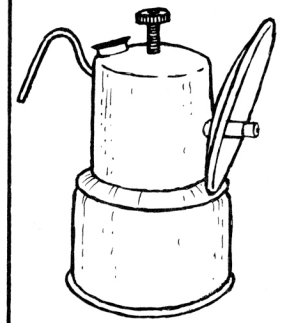
**POLYGON FEED**

Miners preferring a "VERTICAL STYLE" miner's lamp with detachable reflector will find that the VICTOR LAMP gives them the best results. The VICTOR LAMP is very rigid and strongly constructed, all weak points reinforced and strengthened.

**SAUCER SHAPED REFLECTOR**  
2-inch Diameter

Especially made for working low seam coal

No. 662—Polished



*early "Victor"*

↑  
note difference  
↓

All Underground Is Behind  
**"The Scranton"**



Years of hard-knock experience underground—giving knowledge of everything a mining lamp should be—are behind

**The Scranton Acetylene Mine Lamp**—"The practical lamp for the practical miner."

Gives a clear steady light under all conditions in any position.

The volume of light is increased marvelously by our new German Silver Reflector.

Price of this lamp, complete, \$1.00

Write for illustrated booklet.

**Scranton Acetylene Lamp Company**  
145 Belmont Terrace, Scranton, Pa.



**Special Drivers' Lamp**

Round Hook

**Nickel Silver Reflector**

2 3/8-inches in Diameter

**Polygon Feed**

This lamp has extra deep concaved nickel silver reflector—exterior finish polished brass. Equipped with No. 170 Flame Protector, making lamp wind and water proof.

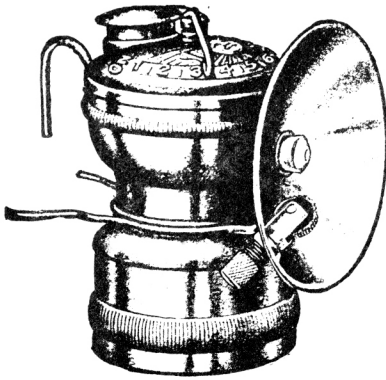
It is especially designed for use in places subject to strong air currents. DRIVERS, MOTORMEN, ENGINEERS, TIMBERMEN, and SHOT-FIRERS will find this lamp very satisfactory.

No. 787—Lamp only. Price.....

*Catalog No. 7*



**No. 15 SUN RAY LAMPS**



1919 Fig. 19704C

Has a non-leakable water cap. A diaphragm inside the cap holds any water forced into the cap due to excess pressure until the pressure is relieved, when the water drips back into the tank.

The hook is turned at a sharp right angle inside the water tank and lies in a recess. This makes it possible to very securely fasten the wire inside the water tank.

The reflector brace and spreader wires are made in combination. This reduces weight and strengthens as well.

The knurling on the carbide container is made extra wide, affording a better grip as well as stiffening and strengthening the container.

The numbered notches on the top of the water tank aid the user in determining the position of the regulating lever.

The reflector collar is riveted. It cannot break loose and weighs less than a soldered collar.

The lamp is equipped with the Kraker-Jack burner, which can be replaced without tools in half a minute and in the dark.

The gasket lies flat and will not curl out of place.

To reduce the weight of the lamp the tank has been cut down so that it holds just enough water to run the lamp for an hour and a half.

Price, Complete..... 1.00

Hansen 1925

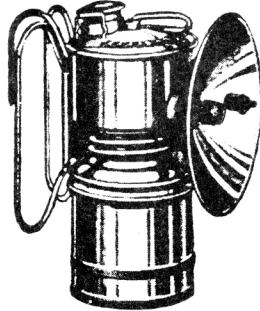


Miners preferring a "VERTICAL STYLE" lamp will find this model JUSTRITE LAMP will give them good results. It is very rigid and strongly constructed, all weak points reinforced and strengthened. Lamps are finished in polished brass with Nickered Reflectors.

Catalog No. 7

**No. 100 Superintendents' Brass Nickel-plated Hand Lamps** 1926

(Guy's Dropper)



Usually furnished with the No. 230 S. L. reflector.

Will burn 3 to 4 hours.

Has large hook and folding handles.

Used by those who prefer a hand lamp.

Also used by hunters, campers, etc.

Packed one in a box.

Price, No. 100.....each \$1.75

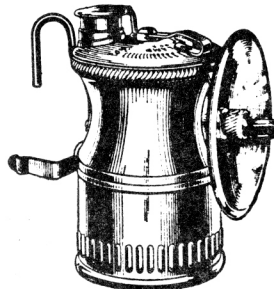


**No. 187**



**CARBIDE LAMP DETACHABLE REFLECTOR WITH SPARKER** 1919

**No. 911c Wolf's Carbide Cap Lamps** 1926



Handsomely finished in nickel plate or brass, made of the thickest gauge metal. It has been kept within the limit of less than 5½ ounces.

The bottom is double seamed, giving three thicknesses of metal at the point where it has to stand the hardest wear.

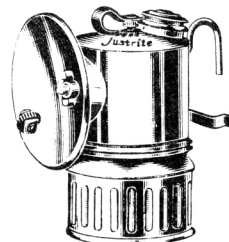
The burner will stay lighted under severe conditions. No

tools or cement necessary to replace a burner. Has sensitive water-feed, controlled by the little ratchet on top of the lamp. Has an excellent instantaneous lighter.

Price, No. 911c.....each \$1.25



**Miners' Cap Lamps**



**No. 130 PIONEER LAMPS** 1919

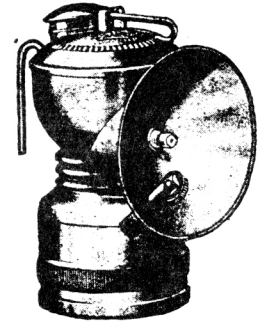


Fig. 19704B

Has no-trouble valve and embodies all advantages of the old reliable Baldwin straight wire feed, plus a strong water valve and water shut-off.

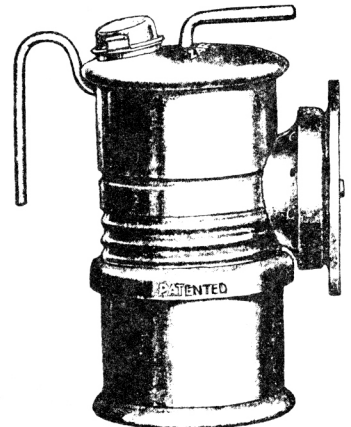
If dirt clogs the water tube, simply pump the water up and down a few times or close the valve, pull out the wire, scrape it clean, and slide it back again.

Also has non-leaking water cap, unbreakable hook, strongly re-enforced on inside and reflector brace soldered to tank.

Price, Lamp only.....each 1.00  
" Windshield..... " .10

**ZAR**

CARBIDE

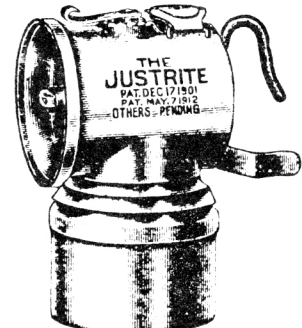


PRICE \$1.00

Strongest in construction

Burners never clog

**MINERS' PIT LAMP** 1913  
LEVER FEED



13½  
Candle  
Power

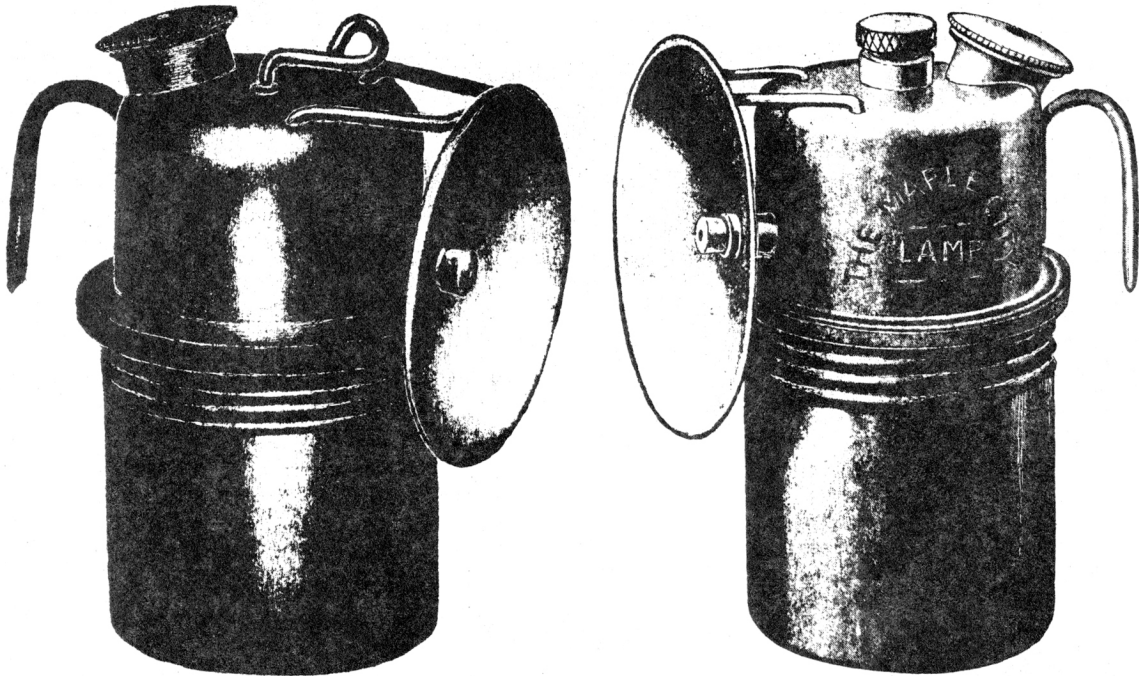
Weight  
5  
Ounces

No. 80. Polished Brass..... \$1.00  
No. 81. Nickel Plated..... 1.25

Extra container with each lamp.

1912

# Maple City Acetylene Mine Lamps



## Take Your Pick

The Maple City Lamp with automatic control of water supply *plus* Water Flow Regulator—or the Maple City Lamp with automatic control of water supply *alone*.

The first is the most efficient lamp made as regards lighting and the most economical as regards consumption of carbide and need of repairs or replacement of parts

The second is scarcely less efficient and gives complete satisfaction for practical working purposes in the mine. It has the special burner and the exceptionally strong "fool proof" construction that is so distinctive of Maple City Lamps.

To demonstrate the quality of our lamps, to any Mine Superintendent upon receipt of his request on company letterhead, we'll gladly send a trial lamp *free*.

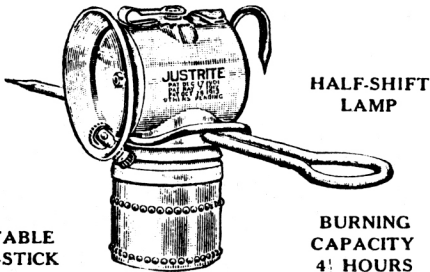
To anyone else we'll gladly send a lamp prepaid upon receipt of \$1.00, the usual price. This includes extra carbide container.

Maple City Bulletins will be sent for the asking to anyone interested. Write.

**Maple City Manufacturing Company**  
Monmouth, Illinois



## CARBIDE MINE LAMPS AND ACCESSORIES



ADJUSTABLE  
CANDLE-STICK

HALF-SHIFT  
LAMP

BURNING  
CAPACITY  
4 1/2 HOURS

No. 101 26 GAUGE BRASS  
No. 103 22 GAUGE BRASS

Write for our 1919 catalog—just out—showing the largest and most complete line of Miners' Lamps. A lamp for every mining purpose and many useful accessories. It's yours for the asking—Do it now.

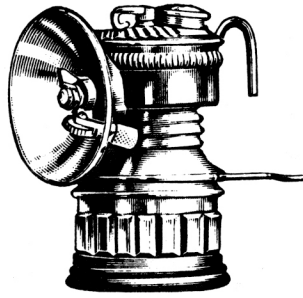
**JUSTRITE MANUFACTURING CO.**

DEPT. J.

2080 Southport Ave., Chicago, U. S. A.

1919

### No. 285 Guy Dropper Carbide Lamps



This carbide lamp has a patented valve cleaner, a sturdy burner tube assembly, and a double seamed water cup and screw cap. The wire brace is detachable; the 2 1/2-inch diameter nickel-plated reflector is fastened to the lamp with a wing nut. The lamp has lasting imported lava tips; the prong lid drains to prevent spouting.

Length of burning time, 3 to 5 hours.

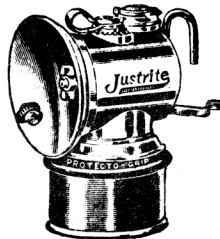
Height of lamp, 3 1/2 inches. Approximate weight each, 6 ounces.

1937

No. 285.....each \$1.00

### No. 787 Justrite Special Drivers' Lamps

Polygon Feed



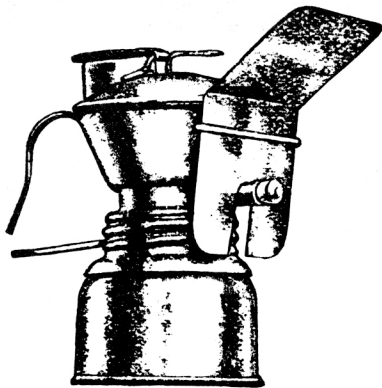
Especially designed for drivers, motormen, engineers, timbermen and shotfirers for use in places subject to strong air currents.

Has extra deep concave nickel silver reflector, 2 5/8 inches in diameter. Exterior finish polished brass. Round hook.

Equipped with No. 180 flame protector, making the lamp wind and water proof.

1937

No. 787.....each \$1.25



## The Light Is Better—The Cost Less

These are use-proved lamps, and experience with them shows that the cost of lighting compared with candles and oil is from *one-half to one-third* less. That alone makes the

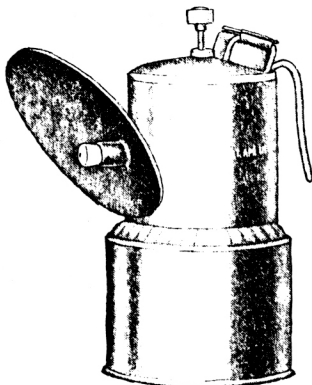
## Baldwin Acetylene Pit Lamp

worth considering. Add to it that even sunlight is not much brighter and you have before you facts that should convince you that this lamp is worth a trial.

Ask us for information.

**John Simmons Co., 102 Centre St., New York.**

1909 No. 33 Patented. Price, \$1.00.



## You Can Regulate The Flame

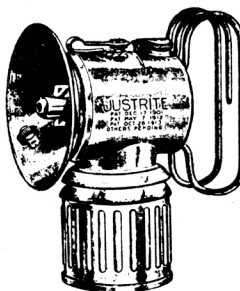
The reason the "Scranton" Acetylene Mine Lamp burns longer and gives a brighter flame is very simple. It has a patent valve control regulating water to carbide chamber, thus permitting flame to be positively regulated and raised or lowered at will. The Scranton Lamp is the most simple and durable you can buy.

Write for prices.

**Francis H. Coffin & Co.** Board of Trade **Scranton, Pa.**  
General Sales Agents

1910

### No. 95 Justrite Superintendent's Lamps



No. 95 Justrite Superintendent's Lamp is of brass, non-magnetic, nickel plated.

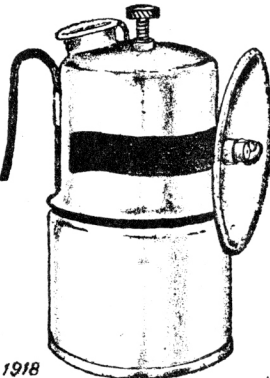
Height, 4 3/4 inches, burning capacity, 4 hours, 3-inch reflector with lighter attachment and flame protector.

Weight, 7 ounces.

1937

No. 95.....each \$2.00





**Pathfinder Acetylene Lamps.**  
 The Lamp shown is our Cap or Head Lamp. It is constructed of extra heavy sheet brass, drawn into solid shells. There are no seams or joints on the outside to cause leaks. The valve seat is also a drawn shell, and the needle valve is made from a solid piece of rod, in such a way that it conducts the water to bottom of carbide chamber, without any possibility of choking off the water supply. Our claims for these lamps are that they are the strongest upon the market, and will burn more steadily than any other made. One extra chamber furnished with each lamp.

1918

**Scranto Acetylene Lamps**  
**Cheaper Than Candles or Oil**  
 The practical lamp for the miner.  
 Leaves the air clear and free from soot, sparks, smoke or noxious gases.

Send for circulars and prices.

**A. L. Derry Co.**  
 Gen'l Sales Agents  
 524 Connell Bldg., Scranton, Pa.



1914

1903 **THE STANDARD Acetylene Mine Lamp**

"The Standard" Acetylene Mine Lamp



Complete. Bowl. Gas Chamber. Carbide Holder.

With each lamp there is an extra gas chamber and carbide holder. This allows for changing or charges and you ALWAYS HAVE A LIGHT. Agents wanted. Address the manufacturers.

**JOHN S. CUMMINGS & CO.,** Tunnelton, W. Va.

**A Constant Flame**

all the time is assured if you use

**The Wolf Acetylene Lamp**

It's safe and explosive-proof. We manufacture all kinds of carbide lamps.

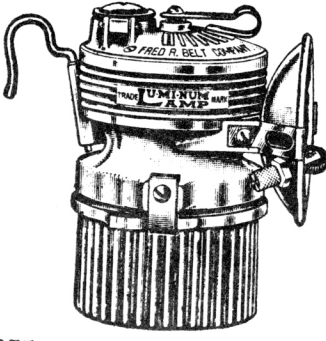
Agents for the Draeger Oxygen Apparatus Co.  
 Write now for full particulars.

**Wolf Safety Lamp Co. of America, Inc.**  
 47 West Street, New York, N. Y.



1914

**Lu-mi-num Miners' Carbide Lamps**  
 With Locking Device



Made in two styles, with round hook for use on regular miner's cap or with flat hook for use on waterproof hat.

Extra heavy plate, can be cleaned and kept bright with a few drops of ammonia.

Made of aluminum; seamless, die-cast construction.

Capacity, 2 hours; charge 1½ ounces.

Height, 3½ inches. Diameter cup, 2 inches; thickness rim, 3/16 inch. Thickness walls, 1/16 inch, exclusive of ribs.

1937 **No. 4**

No. 25 cap clasp included with No. 4 round hook lamps.  
 No. 27 handy cleaning tool included with all lamps.  
 Weight, 6¼ ounces.

No. 4, with Round Hook and 2¼-Inch Aluminum Reflector.....each **\$1.85**  
 No. 43-F, with Flat Hook and 3-Inch Brass N.P. Reflector.....each **2.00**



See Interesting Figures Below

In making up your next estimate of overhead expenses figure on using the Ever Ready lamp at a cost of two cents per day instead of six to ten cents for candles or oil lamps. See result below.

100 men using candles 300 days per year at .06c. per day.....	\$1800.00
100 men using Ever-Ready Lamps 300 days per year at .02c. per day..	\$600.00
100 Ever Ready Lamps.....	75.00
	<b>\$1125.00</b>

A test will convince you. Send us a trial order today.

**The Chas. Hoppe Co.,** 111-113 OPERA PLACE, CINCINNATI, OHIO

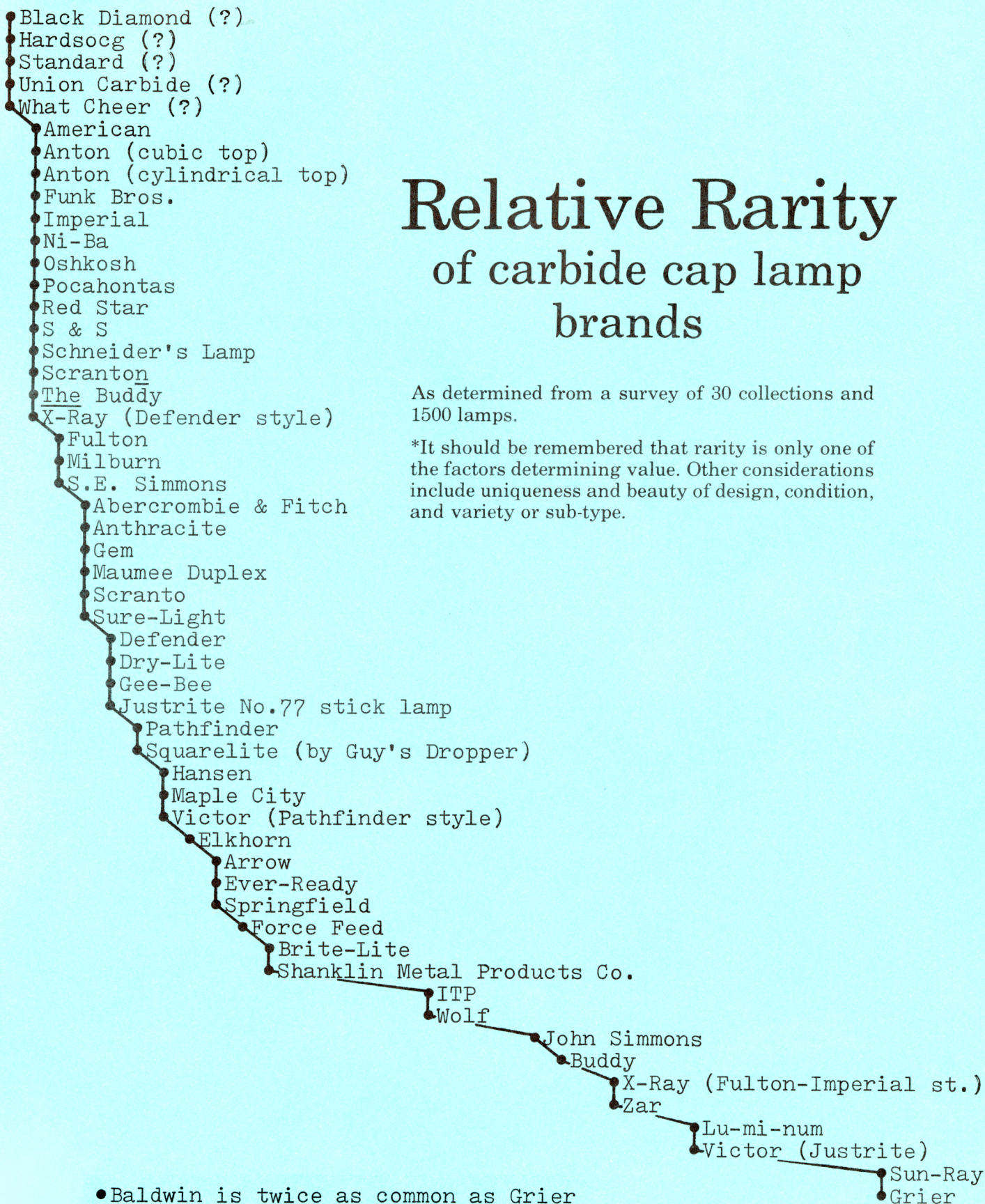
1914

## INDEX

- |   |  |
|---|--|
| <p>Abercrombie &amp; Fitch 13<br/>           American 13<br/>           "Anthracite" 12, 15<br/>           Anton (cylindrical top) 15<br/>           Anton (cubic top) 4<br/>           Arrow 8<br/>           Auto-Lite 8, 10, 16<br/>           Baldwin 12, <b>20</b><br/>           Black Diamond 12<br/>           Brilliant Searchlight 1<br/>           Brite-Lite 11<br/>           Buddy 14<br/> <b>The Buddy</b> 16<br/>           Columbia 1<br/>           Daylight 16<br/>           Defender 5<br/>           Dry-Lite 11<br/>           Elkhorn 14<br/>           Ever-Ready 5, <b>21</b><br/>           Force Feed 11<br/>           Fulton 3<br/>           Funk Bros. 12<br/>           Gee-Bee 9<br/>           Gem 9<br/>           Grier Bros. 8, 9, 16<br/>           Guy's Dropper 5, 6, 7, 16, <b>18, 20</b><br/>           Hansen 11, <b>18</b><br/>           Hardsocg 1<br/>           Imperial 3<br/>           ITP 8, 9<br/>           Justrite 3, 4, <b>17, 18, 20</b></p> | <p>Lu-mi-num 11, <b>21</b><br/>           Lunkenheimer 1<br/>           Maple City 15, <b>19</b><br/>           Maumee Duplex 13<br/>           Milburn 15<br/>           Ni-Ba 13<br/>           Oshkosh 21<br/>           Pathfinder 5, <b>21</b><br/>           Pocahontas 1<br/>           Red Star 15<br/>           S &amp; S 12<br/>           Schneider's Lamp (?) 7<br/>           Scranto 13, <b>17, 21</b><br/>           Scranton 13, <b>20</b><br/>           Shanklin Metal Products Co. 11<br/>           S. E. Simmons 1<br/>           John Simmons (Pioneer) 8, 16, 17, <b>18</b><br/>           Snell Lamp 21<br/>           Springfield 14<br/>           Squarelite 6<br/>           Standard <b>21</b><br/>           Sun-Ray 8, <b>18</b><br/>           Sure-Lite 15<br/>           Union Carbide 5<br/>           Victor (early) 12, <b>17</b><br/>           Victor (late) 3, <b>17</b><br/>           What Cheer 1<br/>           Wolf 5, <b>18, 21</b><br/>           X-Ray 3, 5, <b>18</b><br/>           Zar 12, <b>18</b><br/>           Unknown 10, 13, 14</p> |
|---|--|

(Page numbers in **bold** indicate illustration of entire lamp in an old advertisement)

← Rare Common →



# Relative Rarity of carbide cap lamp brands

As determined from a survey of 30 collections and 1500 lamps.

\*It should be remembered that rarity is only one of the factors determining value. Other considerations include uniqueness and beauty of design, condition, and variety or sub-type.

- Baldwin is twice as common as Grier
- Justrite, Auto-Lite and Guy's Dropper are 6, 4, and  $4\frac{1}{2}$  times more common than Baldwin

